

MEETING MINUTES

Meeting title	RYE PARK Wind Farm Community Consultative Committee (CCC). Meeting #27		
Attendees			
David Johnson (Independent Chair) (DJ)	Martine Holberton, Senior Stakeholder Engagement Advisor, Tilt Renewables (MH)		
Christine Hawkins (Community Member) (CH)	Andrew Galland, HSEC Manager, Tilt Renewables (AG)		
Claude Morson (Community Member) (CM)	Jack Shuker (Project Director, Tilt Renewables) (JS)		
Andrew Field (Community Member) (AF)	Cr John Piper (Hilltops Council) (JP)		
Mike Gilmour (Community Member) (MG)			
Angus Mitchell (Community Member) (AM)			
Observers			
Tom Villiers (EGM – Delivery, Tilt Renewables) (TV)			
Apologies			
Sara Brown (Community Member) (SB)	Cr Pam Kensit (Mayor, Upper Lachlan Council) (PK)		
Jayne Apps (Community Member) (JA)	Cr Jim Abbey (Yass Valley Council) (Cr JA)		
Brendon Conlon (Community Member – alt) (BC)			
Location	Soldiers Memorial Hall, Yass	Date & start time	21 June 2022 at 7.10 pm

Topic	Discussion
1. Welcome and Acknowledgement of Country	<ul style="list-style-type: none"> The Chair acknowledged the Traditional Owners of the land within the project area and on which we meet, being the Wiradjuri and Ngunnawal people, paying respects to their Elders past, present and emerging. The Chair (DJ) welcomed everyone to the meeting and announced that he was recording the meeting; there were no objections.
2. Introductions	<ul style="list-style-type: none"> Each person introduced themselves around the room. The Chair specifically welcomed the new community members.
3. Declarations of Interest	<ul style="list-style-type: none"> None significant AF declared that he is floating a drill rig tomorrow for the project.
4. Correspondence	<ul style="list-style-type: none"> None
5. Minutes of the Previous Meeting	<ul style="list-style-type: none"> Minutes of the last meeting of the Rye Park CCC (#26) on 12 April 2022, were taken as approved as a draft had been circulated to all members for comment.

**6. Business Arising
from Prev. Minutes**

- Action 3: CH reported on-going issues with drivers speeding through speed limit zones for roadworks, including sub-contractors; AG agreed to step up consultation with contractors & their staff; numerous incidents reported by others also.
- Action 5: CH asked about dilapidation studies for the pot-hole repaired areas; AG & TV noted this is an on-going process & is continuing; at the moment, the project is responsible for road repairs related to damage caused by the project, but complaints can still be directed to councils; Tilt have regular meetings with council road engineers.
- AM noted that under the hierarchy of road classifications, some are the responsibility of RMS; CH noted that Rye Park Rd is a Primary road and therefore RMS responsibility.
- JP queried the number of HVs that were permitted on local roads in accordance with project consents and TV agreed that Tilt will follow up with information to confirm **(ACTION Item)**
- AM reported that the Boorowa Business Chamber have made representations to NSW Police and there is now an increasing presence of Highway Patrol vehicles in the area; speed cameras have also been requested for Boorowa.
 - AG also confirmed that both Tilt and Zenviron have approached Yass highway patrol command to request increased surveillance
- JP – a large number of heavy vehicles (HVs) are currently using roads in Hilltops Shire, but only some are related to the wind farm; RPWF have a designated and approved heavy vehicle route which is required to be used exclusively. Any breaches, several occurred early on following construction commencement, have been dealt with.
- MG noted that light vehicles have been using Cook St Rye Park to avoid the Yass St roadworks, resulting in some damage. Tilt agreed to look into this **(ACTION Item)**
- Some discussion focussed on the definition of HV and LV in relation to the Traffic Management Plan for the project – Tilt to respond **(ACTION Item)**.

7. Proponent's Report

Martine introduced the presentation and project updates from Tilt Renewables.

- A series of slides were presented (see attachment) and supporting information was provided by MH, JS and AG.
- The program of works for transport & road upgrades has been delayed in some areas due to heavy rain; civil works also partly affected.
- MH suggested that a representative from Vestas (turbine construction contractor) could attend a future CCC meeting to present;
- AG presented information on compliance and safety matters, and noted that Worksafe are now satisfied re the previous accident involving an arborist; no further incidents. No environmental incidents to report; the previously mentioned warning letter from DPE has been received relating to water extraction from a dam.
- Covid protocols remain in place for all contractors and staff.
- AG updated the committee on compliance/enquiry procedures, and noted that there were 6 non-compliances for the project: 4 HVs using non-approved routes, 1 LV using non-approved access, 1 access of water from a DPI Fisheries protected waterway.
- AG - The independent audit which was done in Feb is on the website; 3-monthly internal audits are also carried out by Tilt.
- MH noted that fortnightly construction updates are continuing, however the fortnightly ads will cease at the end of this month. The June newsletter will be issued very soon.
- Road upgrades and Boorowa by-pass civil works are continuing; Rye Park Rd & Dalton Rd works have been rain-delayed but progressing again now. Cooks Hill Rd unsealed sections also to be done in conjunction with Upper Lachlan Council, probably in spring, but depend on timing of some drainage works and also complications due to vegetation in close proximity to the road. ULS Council have been very co-operative & this is assisting the process.
- JP asked what is the length of the blades to be transported to the turbine sites. They are 81m in length and require a very long vehicle, steered at both ends.
- The site compound is now effectively complete. The northern concrete batching plant is nearly ready for use, and will be established for a period of time at three different sites, moving from one to another.
- AG and TV provided an outline of hardstand requirements for crane establishment and blade storage at each turbine location; initial tower construction is by a mobile crane, and then a larger tower crane will be used to complete the turbine and blade installation.
- Concrete will be trucked from batching locations to establish the tower foundations – approx. 600 cubic metres of concrete per tower. CH asked how much water is required in a cubic metre of concrete – CM suggested about 150 L (to be confirmed by JS **(ACTION Item)**)
- The coffee van at Rye Park is operating and CM reported compliments from local people; footpath works alongside the road near the rec ground and coffee van now complete, and road works to be completed soon.
- The bus stop at Rye Park is being moved at Council (and residents) request.

	<ul style="list-style-type: none"> • A Modification to the approval is being sought, comprising several minor works across the project area (at draft stage, including consultations with DPE). <p>Discussion followed on a range of subjects, and questions were asked as follows:</p> <p>QUESTIONS</p> <ul style="list-style-type: none"> • JP asked how many employees will be required on an on-going basis once the wind farm is finished and operating? TV replied about 10. • The present site compound will be removed, and the site rehabilitated once construction is complete. • AM noted that the Boorowa Business Chamber would like Tilt to provide a presentation to members at some point to inform them more about the wind farm. TV replied that Tilt would be very happy to do this. • AF noted non-compliances on road use since start of project, including repeat offenders, eg. HVs using Cooks Hill Rd and LVs using Blakeney Creek Rd. AG confirmed that access related NCRS have been investigated with controls implemented and reported to DPE. AG confirmed the project has installed cameras which are used to identify offenders on the Blakeney Creek Rd crossing and Zenviron is also dealing with their drivers. • AF asked if the road works and temporary speed limit & stop/go signs should be covered or removed after working hours, as many people are now taking little notice of them because of that. (ACTION Item). • AF reported one digging machine operating alongside a road, which extended its bucket across the road pavement in a dangerous manner; he also queried why there was no stop/go person in control at the time? AG confirmed that this was passed onto Zenviron to investigate and surveillance camera footage was viewed by the project.
<p>8. Other Agenda Items</p>	<ul style="list-style-type: none"> • CM sent an email regarding access and parking etc in the vicinity of the new coffee van, and difficulties caused by the drainage works; also the bus stop relocation, which was as required by Council. These matters were further discussed.
<p>9. General Business</p>	<ul style="list-style-type: none"> • CH asked if Tilt are intending to install lights on the tops of the turbine towers? She can see lights on the top of Bango WF turbines & several people are affected and complaining. TV replied that the question is out of Tilt's control, and they would prefer not to install lights. It may be a requirement to install lights from DPE on recommendation from CASA, but Tilt is continuing to explore options with the objective of not installing lights unless it is confirmed as required. • CH asked if our meetings could sometimes be held in a location closer to residents toward the north. Resolved to hold next meeting at Rye Park Hall, on Monday 22 August. Tilt to arrange refreshments.
	<p>Meeting closed: 9.00 pm.</p>

<p>Next Meeting</p>	<p>Next meeting is scheduled for <u>Monday 22 August 2022</u>, at 7pm at Rye Park Hall.</p>
<p>ACTIONS REQUIRED</p>	<ol style="list-style-type: none"> 1. Tilt to confirm the maximum numbers of heavy vehicles permitted to use various roads in the area. <i>The project is required to manage HV numbers in accordance with the Staging Report consent document that can be found on the project website. There are no limits on HV numbers for purposes of the public road upgrades and limitations on HVs for wind farm works are lifted as road works are completed, as set out in the Staging Report.</i> 2. Driver behaviours & road safety: MG & AG to have concerns re speeding, cutting corners & tailgating; raised in tool-box talks and through contractor's staff. – ONGOING REMINDERS 3. Tilt to confirm the maximum weights for the various classes of Heavy Vehicles (and light vehicles) in accordance with the project Traffic Management Plan. <i>HV definition from approved project TMP - As defined under the Heavy Vehicle National Law (NSW) but excluding light and medium rigid trucks and buses no more than 8 tonnes and with not more than 2 axles.</i> 4. Dilapidation study of potholes and safety on the roads (RP/Dalton Rd in particular) <i>Since the CCC meeting, pothole patching has been undertaken along Dalton Road and contractor continues to monitor and schedule maintenance works as required.</i> ONGOING 5. When is Cooks Hill Road getting sealed? <i>Tilt remains committed to sealing Cooks Hill Road within the constraints of the road reserve. Tilt continues to work with Upper Lachlan Shire Council to resolve constraints and technical challenges.</i> ONGOING 6. Tilt to confirm the amount of water contained in a cubic metre of pre-mix concrete. <i>Tilt confirms that the water usage as per the design will be between 188-193 L/m³ for concrete strength between 32-40 MPa.</i> 7. Tilt to confirm whether the temporary speed limit and stop/go roadwork signs can be covered or removed outside working hours & at night, so as not to confuse motorists?

AG confirmed that during aftercare construction signs are displayed or covered consistent with the approved Traffic Guidance Scheme (TGS). The TGS is designed and implemented by industry professionals who are trained and accredited in designing and implementing traffic control plans.

- 8. Cooks Hill Road driver safety – Warnings at pre-starts that people will be removed from the job if they don't drive safely and secure their load.**
Since the CCC meeting, Tilt has focussed on ensuring pre-starts (daily) and toolboxes (weekly) cover driver code of conduct and safety on public roads. These will continue.
ONGOING
- 9. Littering – To be included in toolbox talks etc**
ONGOING REMINDERS
- 10. For next meeting, Tilt to arrange use of Rye Park Hall and to organise refreshments, if possible from the Coffee Van now established at Rye Park**
BOOKED
- 11. LV's are using Cook St now to avoid Yass St works, now that street is seeing damage. Can Tilt assess this?**
AG raised this with Zenviron on 22/6/22 to request project staff to use Yass St when traversing through Rye Park (included in project pre-start 23/6/22)
- 12. New location of the bus stop – can Tilt update the CCC on where this will be when Council provides an update?**
The project understands Hilltops Council is intending to install the bus stop just north of the entrance to the recreation ground, on the eastern side of the footpath.
- 13. Boorowa Bypass drop from road to drains. Tilt to review and revert on whether this will be addressed?**
The 'Boorowa Bypass' and Dillon/Long St intersection roads have been built in accordance with designs approved by Council and since inspected by Council. There are no plans to install bollards as suggested in the meeting, however, guideposts have been installed as required under the approved road designs.



RYE PARK WIND FARM

CCC MEETING

21 JUNE 2022



CONTENTS

1. PROJECT UPDATE

2. SCHEDULE OF WORKS

3. YASS STREET, RYE PARK VILLAGE – FOOTPATH UPDATE

**4. ENVIRONMENT AND COMPLIANCE
MODIFICATION TO PROJECT APPROVALS**

**5. STAKEHOLDERS AND COMMUNITY
FEEDBACK, ENQUIRIES & COMPLAINTS
CCC MEMBERS**

**6. PROJECT BENEFITS
EMPLOYMENT
BENEFIT SHARING PROGRAMS**



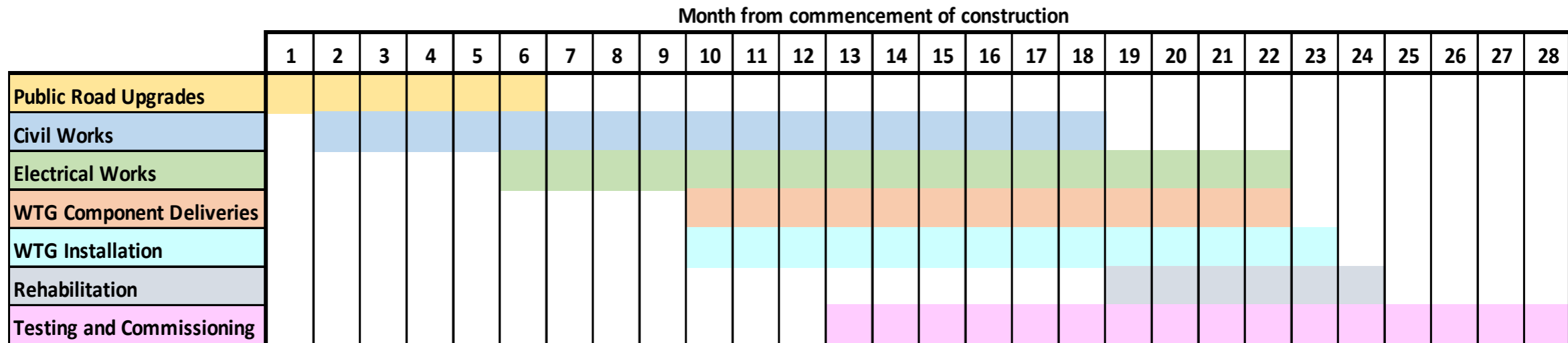
SCHEDULE OF WORKS

INDICATIVE SCHEDULE



Project Programme:

- Construction will include road upgrades, wind farm construction (not including pre-construction activities) and commissioning
 - Construction Commencement – **1 December 2021**
 - Commissioning – From Late 2022
 - Operations – Early 2024



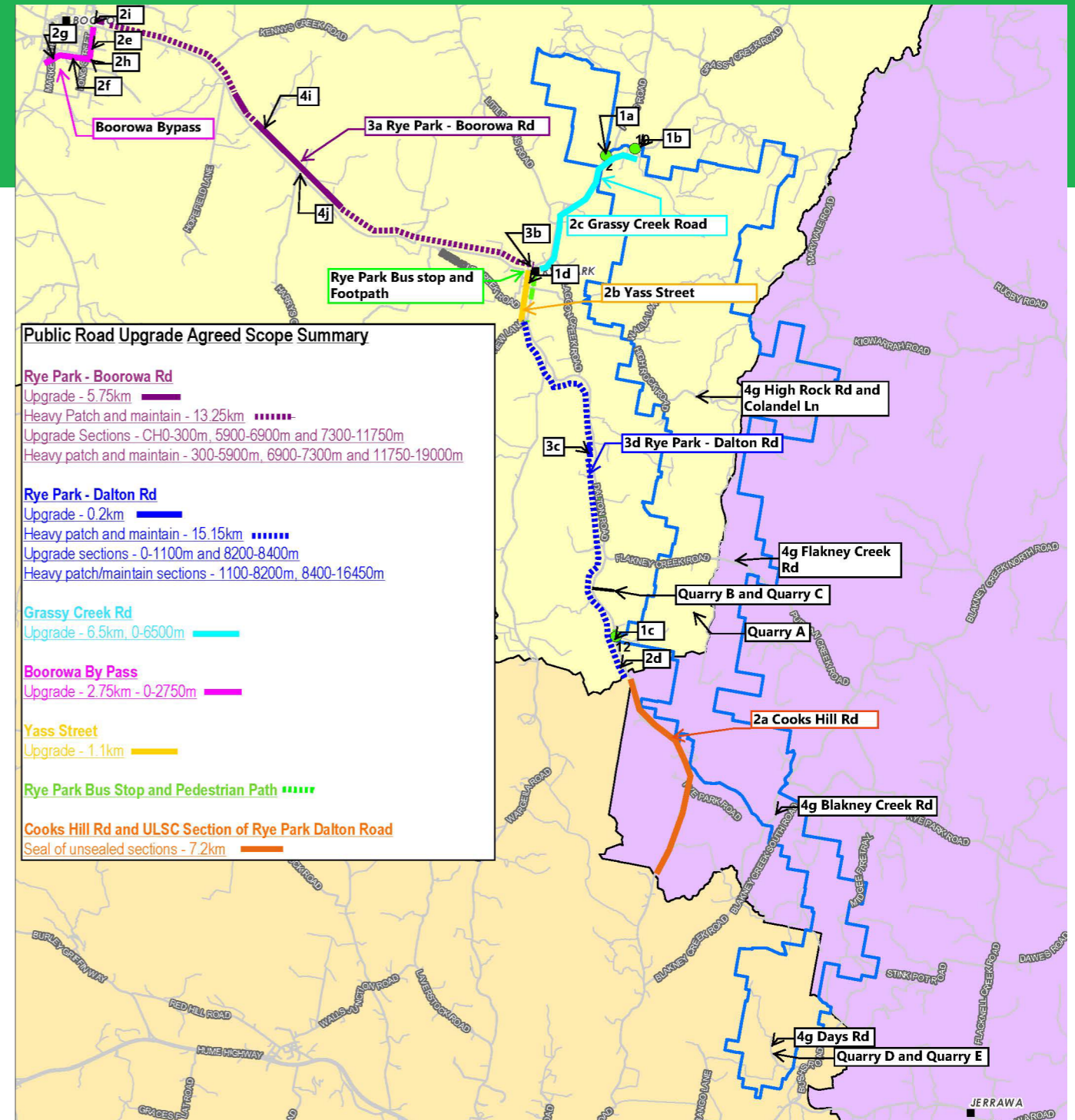
SCHEDULE OF WORKS

TRANSPORT, ROAD UPGRADES & SCHEDULE



Road Upgrades Update:

- Site Entry Intersections – Complete.
- Grassy Creek Road – Pavement and drainage works 90% complete. Sealing works complete.
- Boorowa Bypass – Pavement and drainage works complete. Sealing complete. Causeway complete
- Boorowa-Rye Park Rd – Re-build sections and heavy patching works complete. Pavement placement complete. Sealing complete. Line marking and street furniture 90%
- Rye Park-Dalton/ Cooks Hill Rd – RP-Dalton Rd – Gravel placement complete and sealing to commence. Continued work with Council is ongoing to resolve outstanding design options for Cooks Hill Rd.



SCHEDULE OF WORKS

TRANSPORT, ROAD UPGRADES & SCHEDULE



Week	Stage 1				Stage 2											Stage 3										
	1	2	3	4	5	6	7	8	9	10	11	12	13	14	15	16	17	18	19	20	21	22	23	24	25	26
Site Entry 12 Intersection	█	█	█	█																						
Site Entry 2 Intersection	█	█	█	█																						
Site Entry 10 Intersection	█	█	█	█																						
Grassy Creek Road Formation					█	█	█	█	█	█	█	█	█	█	█											
Grassy Creek Road Seal																█	█	█	█	█	█	█	█	█	█	█
Grassy Creek Culvert																										
Grassy Creek Causeway																										
Yass Street Formation	█	█	█	█	█	█	█	█	█	█	█	█	█	█	█											
Yass Street Seal																										
Boorowa Bypass Formation	█	█	█	█	█	█	█	█	█	█	█	█	█	█	█											
Boorowa Bypass Seal																										
Rye Park bus stop and footpath																										
Heavy Patching/maintenance - RPB	█	█	█	█	█	█	█	█	█	█	█	█	█	█	█	█	█	█	█	█	█	█	█	█	█	█
Boorowa - RP Seal																										
Heavy Patching/maintenance - RPD	█	█	█	█	█	█	█	█	█	█	█	█	█	█	█	█	█	█	█	█	█	█	█	█	█	█
Boorowa-RP Road Formation					█	█	█	█	█	█	█	█	█	█	█	█	█	█	█	█	█	█	█	█	█	█
RP-Dalton Road Formation																										
RP-Dalton Road Seal																										
Cooks Hill Road and ULSC Section of Rye Park Dalton Road					█	█	█	█	█	█	█	█	█	█	█	█	█	█	█	█	█	█	█	█	█	█

Cooks Hill Road upgrade – update

- Tilt Renewables continue to work with Upper Lachlan Shire to finalise the design of the Cooks Hill Road upgrade.
- The final design is being developed to address key biodiversity and heritage constraints, whilst balancing road safety considerations.
- Both parties are working as a priority to finalise design, and undertake works, as soon as practicable.
- Until such time the works are completed the Project will continue to maintain the road.

Wind Farm Works

- Temporary Compound Facility – Stage 2 of office setup underway
- Temporary batch plant installed and being commissioned in northern section
- Earthworks continue in the northern and central areas heading towards the northern and southern sub stations.
- Foundation excavation commenced in the northern section



Temporary site office occupied by project staff

PROJECT UPDATE

WHAT HAVE WE BEEN UP TO

- Public road upgrades continuing
- Earthworks on site ongoing – New areas commenced
- ARDG quarry supply update:
 - ARDG have commenced operations in Fairburn and material is being supplied to the RPWF via the internal access points
 - ARDG have commenced preparation works on the Southern quarry.



OSOM bypass and drainage Dillon/Long St



Completed wind farm access track and rehab



WTG hardstand construction

YASS STREET, RYE PARK VILLAGE FOOTPATH UPDATE



As part of the Wind Farm Project, we are upgrading Yass Street to ensure that it is suitable and safe during construction, and further to minimise traffic impacts for local residents.

In addition to this development requirement, Council requested that the Project install a footpath to ensure pedestrian safety. The landscape plan to tie-in the footpath has been reviewed by Council and residents of Yass St.

Update:

- Detailed footpath design for construction and Council sign-off – *complete*
- Footpath installation – *complete*
- *Drain filled to allow for Parking at Memorial Hall*
- *Hilltops Council to reinstate bus shelter and rectify drainage at causeway.*
- *No trees have been removed to-date on Yass Street*
- *Extended the footpath to tie into Kershaw Street*
- Rehabilitation and drainage works – *underway*
- Landscaping tie-in works – *August (TBC)*



Modification

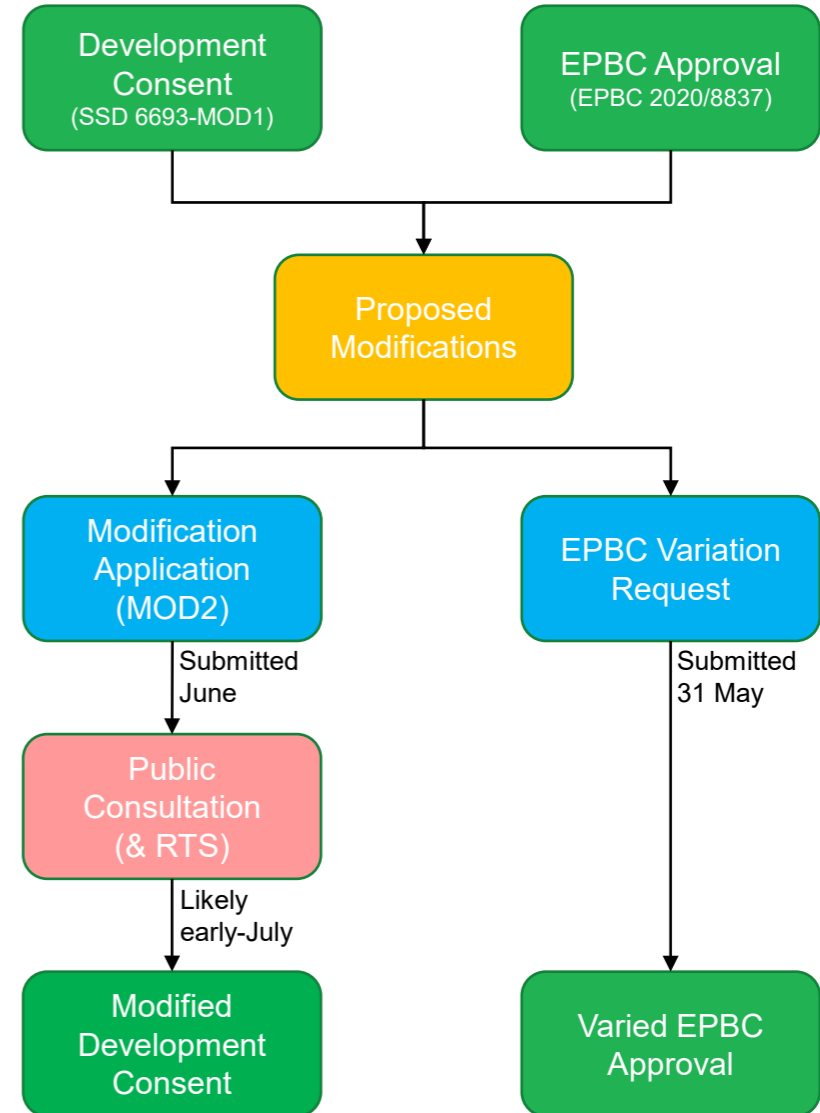
- Several optimisations to the access track design to allow for the efficient delivery of the Project
- Largely proposed to address challenges of constructability (e.g., avoidance of waterways and riparian zones, gully crossings)
- Requires amendment to the development corridor in which infrastructure is able to be sited (Development Consent) / the Project Area (EPBC Approval)

Benefits

- Decreases the overall requirement for establishing approximately 1 km of access tracks across the Project
- Significant reduction in the amount of cut and fill to establish the modified access tracks
- No net increase to either biodiversity values (reduction in offset credit liabilities) or impacts to Aboriginal heritage sites (sites identified and avoided)
- Reduces risks of delay to the overall construction scheduling

Other considerations

- No changes proposed to other wind farm infrastructure (e.g. location of wind turbines and electrical distribution infrastructure)
- No additional land requirements (only minor changes to existing landowners)
- Requires resubmission and approval of several key management plans (e.g. BMP, HMP and Offset Strategy) to reflect the proposed changes





Safety

- 1 incident recorded and closed out relevant regulatory notifications undertaken, leading indicator reporting trending positively.
- COVID-19 Management Protocols remain in place in accordance with NSW regulations/guidelines incl. Rapid Antigen Testing, and NSW isolation protocols enforced

Environmental

- No incidents recorded, leading indicator reporting trending positively.
- DPE feedback received relating to water extraction from DPI Fisheries dam – Warning letter

Complaints and Compliance

- Complaints register is updated and published monthly on website
- 6 x Non-compliances – HV use of non approved routes (Cooks Hill Road), LV use of non approved access and dam water extraction
- DPE Compliance officer visited site in December, March and surveillance inspections through April-May
- 3-monthly internal compliance audit scheduled for 22 June 2022 (2nd internal environmental audit)
- Independent audit undertaken February, report received and submitted to DPE including Actions and recommendations report (Uploaded to website)
- Tracking of vegetation disturbance has commenced (surveyors undertaken pickups through site) Initial report submitted to BCD as per BMP requirements

Biodiversity Management

- Pre clearance surveys continue prior to works commencing in:
 - Native vegetation sections along the public road work upgrade areas and,
 - Within the wind farm site prior to construction works occurring
- Exclusion flagging of targeted high value vegetation/habitat areas
- Ecologists on site during targeted habitat tree removal, hollow salvage and striped legless lizard habitat removal
- Rehabilitation of finished areas continues including replacement of topsoil and stabilisation

Traffic Management

- Monitoring of heavy vehicle movements into the project entries continues in line with TMP staging report requirements
- Heavy vehicle booking system continues to be used to manage heavy vehicle movements during TMP staging report (Stages 2-3)

S&I contractor included in monitoring and booking systems

Heritage management

- Cultural heritage salvage has been undertaken by archaeologists and Local Aboriginal Land Council representatives
- Exclusion fencing installed at no impact locales within proximity of upcoming work areas

Biodiversity / Offsets

- Continuing to work through the assessment of the land based offsets identified to formally register these offset sites with the Biodiversity Conservation Trust.
- Continue to identify options to fill any gaps not fulfilled by the identified sites (e.g. through new sites, or existing market credits)

Pre-Commissioning Plans

- Drafting key management plans (NMP, BBAMP and SPP)





Communication

- Newsletter – *June issue out soon*
- Fortnightly construction updates continue w focus on public road upgrades – *via email and in community noticeboards*
- SMS updates continue – *to direct subscribers to read the full updates online*
- Ads in local papers – ***will cease at the end of June***
- CCC meetings (bi-monthly)

Complaints and Enquiries

- Direct email: complaints@tiltrenewables.com or people can use: ryeparkwindfarm@tiltrenewables.com or call 1800 WE TILT (938 458)
- View our Complaints Management Procedure and Project Complaints Management Plan on the [Project webpage](#).
- Complaints Register up to date as of end-May 2022.

Benefit Sharing initiatives update

- **The Outpost Food Van** is now open from 7am – 3pm daily, serving up hot food and quality coffee. Pete has lots of ideas and is keen to support community initiatives at the Rec Grounds and with the Rye Park school.
- The Rye Park Wind Farm bursary program with the **Boorowa and Yass Country Education Foundation's** is underway. Recipients from Boorowa foundation will be announced shortly. Yet to determine Yass recipients. Information will be included in forthcoming newsletter.
- **Mental health support via AWI Consulting** – Deed is with AWI currently. Once review is complete, we will be ready to execute. Anticipated launch is now Term 3. Funds will be used to cover costs of psychological assessments and wellbeing workshops, and will be made available to local schools (Boorowa Central School, Rye Park Public School, St Joseph's School, Dalton Primary).
- **Boorowa Community Landcare Group** – EOIs will be promoted shortly for revegetation initiatives on private land and employee volunteerism where possible.
- **Cemetery bench seats** – Tilt Renewables is purchasing two new bench seats for the cemetery. Hilltops will undertake install shortly.
- **Boorowa Irish Woolfest** – Tilt Renewables RPRES is a sponsor this year.





Employment Opportunities

- Goods & Services Register – monthly update to contractors
- ICN Gateway monthly report



Local subcontracts awarded include:

- Concrete Supply for Turbines – Hanson (national)
- Reo Installation Turbine Foundations and OHL – Stride Reinforcement (Yass)
- Civil Area 8 Earth Works was awarded to – Horizon United (Cootamundra)
- 33kv Line – SP Power (Round Corner)
- Under Ground Services – All-Energy Contractor
- O&M Design – MKM Constructions (Bathurst)
- O&M Construct only – still tendering but have gone to local companies e.g. Goulburn, Canberra, Boorowa, Murrumbateman
- Substations North and South – JLE Group (Dubbo)

Call out for new contracts to be included in June newsletter

DISCUSSION

