

MEETING MINUTES

Meeting title	RYE PARK Wind Farm Community Consultative Committee (CCC). Meeting #25		
Attendees			
David Johnson (Independent Chair) (DJ)	Christine Hawkins (Community Member) (CH)		
Andrew Field (Community Member) (AF)	Martine Holberton, Community & Stakeholder Engagement Adviser, Tilt Renewables (MH)		
Sara Brown (Community Member) (SB)	Matt Glass, Project Manager, Tilt Renewables (MG)		
Jayne Apps (Community Member) (JA)	Andrew Galland, HSEC Manager, Tilt Renewables (AG)		
Observers			
Rod Gibson; Ros Gibson	Mark Selvaratnam, Asst Site Mgr, Tilt Renewables (MS)		
Angus Mitchell	Geoff Dutailis (CEO, Tilt Renewables)		
Apologies			
None			
Location	Soldiers Memorial Hall, Yass	Date & start time	15 February 2022 at 7.10 pm

Topic	Discussion
1. Welcome	<ul style="list-style-type: none"> The Chair (DJ) welcomed everyone to the meeting and announced that he was recording the meeting; there were no objections. He also welcomed Rod Gibson and Angus Mitchell as observers, as both have nominated for vacant positions on the CCC as community members.
2. Acknowledgement of Country	<ul style="list-style-type: none"> The Chair acknowledged the Traditional Owners of the land within the project area and on which we meet, being the Wiradjuri and Nggunawal people, paying respects to their Elders past, present and emerging.
3. Declarations of Interest	<ul style="list-style-type: none"> None
4. Minutes of Previous Meeting	<ul style="list-style-type: none"> Minutes of the last meeting of the Rye Park CCC (#24) on 30 November 2021, were taken as approved as a draft had been circulated to all members for comment.
5. Business Arising	<ul style="list-style-type: none"> It was noted that Action item 7 from the previous minutes had not yet been done; MG to do (indicate where line-marking is occurring on Cooks Hill Rd). CH asked about the OHL (overhead line) strike incident discussed at the last meeting, and reporting requirements. AG noted it was a member of the public who first reported and Zenviron responded with Worksafe. The safety manager is responsible for reporting & decisions, and reporting rules depend on the nature of the incident. The question of the new council CCC reps was raised (CH) and MH & DJ replied that each of the three councils have been asked to nominate reps for the committee, but have not done so yet.

<p>6. Correspondence</p>	<ul style="list-style-type: none"> • Emails re traffic on Cooks Hill & Blakney Creek Rds, incl to & from AF, DJ and Tilt; • Emails to Yass & Hilltops councils re minute taker; • Email from DJ to former Chair, Nic Carmody, thanking him for his significant contribution to the CCC over many years.
<p>7. Proponent's Report</p>	<p>Martine introduced the presentation and project updates from Tilt Renewables.</p> <ul style="list-style-type: none"> • A series of slides were presented (see attachment) and supporting information was provided by MH, MG and AG. • Construction commenced in Dec 2021 and has included public road upgrades, establishment of temporary facilities, access roads and quarrying operations commenced at Barrackville. • The project programme was outlined with civil works to continue for about 18 months; electrical works will commence mid-year and continue until late 2023. • Turbine deliveries and installation will commence in late 2022 and continue for about 12 months; testing and commissioning will commence at the end of 2022 and continue through 2023 and into 2024. • An indicative schedule of road upgrades is shown on slide 6; MS provided an update. • A summary of environmental management works and compliance is provided on slides 9-11. AG noted that a complaints register is maintained and DPIE compliance officer Katrina O'Reilly visited the site in December following several complaints. • Stakeholder & community engagement is continuing via newsletters, construction updates, text messages, newspaper ads and CCC meetings (which will be bi-monthly as required). • Details of employment opportunities and the project benefit sharing plan were outlined (slides 14,15) • MH and DJ provided an update on the advertising for new community members of the CCC. Two nominations have so far been received (Rod Gibson and Angus Mitchell, who are present tonight as observers). Nominations close on 6 March; the CCC Guidelines allow a max of 7 community members, but there is no minimum. <p>Discussion followed on a range of subjects including traffic, road damage caused by both heavy and light vehicles, impacts from extraction of water from dams, compliance issues, independent audits, visual impacts and mental health effects on the community. See under General Business below:</p>
<p>8. General Business</p>	<ul style="list-style-type: none"> • CH noted that road conditions have deteriorated significantly from trucks and increased traffic since construction works began, with many serious pot-holes present. • The 10 tonne limit sign on Cooks Hill Rd needs to be moved to near Faulder St, well before trucks reach the current sign (AF). • CH is concerned that a dam used for water extraction is habitat for the endangered Pygmy Perch. • AF raised the previous OHL strike incident during geotech works in June. It was confirmed that the incident was investigated, reported to Worksafe NSW and actions arose. The incident has been resolved. • SB expressed concern that the independent auditor only comes to inspect when it is known they are coming, questioned whether this prompts the contractor to

	<p>ensure compliance on site in advance. Tilt replied that everything is done in accordance with DPIE consent requirements. It was suggested by MH that we request Katrina O'Reilly of DPIE to come and address the CCC about compliance issues.</p> <ul style="list-style-type: none"> • AF noted that speeding cars and light vehicles remains a serious problem on the roads he uses, and it is largely project-related. His wife had a near-miss incident and they are proposing to put cameras in their cars. • CH stated that it is common with other wind farm projects for road safety to be a major issue, with non-local people speeding and driving dangerously. • SB & CH asked what was being done to improve road safety; AG noted the Yass police highway patrol had visited the southern area at his request. He requested that anyone aware of such issues should report to Tilt, preferably with details of location, vehicle type, time and registration no. if possible, and all such incidents will be investigated. • SB asked for consideration and support for mental health issues on a broader community basis, not just through schools. This suggestion was supported by all community members and the chair. Tilt stated that they are committed to a program for school children and will focus on this as part of the Benefit Sharing Plan. • The chair (DJ) noted that the matter of community mental health will remain a topic for discussion at future meetings, and that Tilt considers other avenues for support in this area. Tilt stated that sponsorship and donations will be considered towards broader mental health awareness initiatives or on an ad-hoc basis. • JA asked about tree removal and habitat assessment. AG replied that full assessments by ecologists are carried out prior to any removal of trees. • CH asked how Tilt determine the number of trees to be planted? This is calculated by qualified consultants via a government-approved calculator (AG, MG). • JA considers that the visual impacts of the turbines has been seriously underestimated by everyone; the 4 km impact radius is totally inadequate and she said the Bango wind farm turbines are visually intrusive at her house at over 30km distance. • JA noted that there have been complaints in Boorowa about dust resulting from road upgrades. • JA asked whether any water has been taken from creeks. RG believes this is not the case and <i>this has subsequently been confirmed by Zenviron</i>. • AF noted that the amount of roadside litter has recently increased; this will be addressed in toolbox talks by Tilt and contractors. • CH asked if Tilt had a policy regarding animal strikes on roads. Tilt has no specific policy but persons are asked to check any animal which has been hit and if they are alive and can be helped they should contact WIRES or other assistance. CH said there are individuals in the area who rescue and help injured wildlife and she can provide contact details. Tilt to include in toolbox talks and contractor meetings. • CH also asked about procedures in regard to proposed livestock movements in the area; any landowners with plans should contact Tilt. • CH reported a water truck driver who made a dangerous u-turn at site entry 12 the previous day. <p><i>Update: Tilt had this raised at monthly Zenviron meeting (16/2) Zenviron to address through pre start and toolbox meetings</i></p>
<p>9.Other Agenda</p>	<p>None</p>

Items	
Next Meeting	<p>Meeting closed: 9.45 pm.</p> <p>Next meeting: Scheduled for Tuesday <u>12 April 2022</u>, at the same venue. (To be confirmed)</p>
ACTIONS REQUIRED	<p>1. Tilt to indicate where line-marking is taking place on Cooks Hill Road. <i>Line marking will be installed along sealed sections of Cooks Hill Rd where achievable (corners and bends where seal widens). CLOSED</i></p> <p>2. David to contact Katrina O’Reilly from DPIE re request for attendance at next meeting. COMPLETE</p> <p>3. Dilapidation study of potholes and safety on the roads (RP/Dalton Rd in particular): can we get someone out to assess whether there are any really dangerous ones that might need patching attention sooner rather than later? Would be a good safety exercise. <i>Since the CCC meeting, pothole patching has been undertaken along Dalton Road and contractor continues to monitor and schedule maintenance works as required.</i> COMPLETE</p> <p>4. When is Cooks Hill Road getting sealed? (A. Field) <i>Tilt remains committed to sealing Cooks Hill Road within the constraints of the road reserve. Tilt continues to work with Upper Lachlan Shire Council to resolve constraints and technical challenges.</i> ONGOING</p> <p>5. Signage: refer to A. Field’s email about where exactly to install signage before Cooks Hill Rd (at Faulder Ave). <i>Signs have been installed – see photos at the end of table.</i> COMPLETE</p> <p>6. CH asked about impacts on Pygmy Perch in dam used for water extraction. Need to report back on the outcome / determination from DPIE <i>Tilt is still waiting for an official response from DPIE.</i> OUTSTANDING</p> <p>7. Cooks Hill Road driving – how to ensure workers practice safer driving? Alerting the local police to do more patrols is a good idea. Warnings at pre-starts that people will be removed from the job if they don’t drive safely and secure their load. <i>Since the CCC meeting, Tilt has focussed on ensuring pre-starts (daily) and toolboxes (weekly) cover driver code of conduct and safety on public roads. These will continue.</i> ONGOING</p> <p>8. Littering – To be included in toolbox talks etc ONGOING – as above</p> <p>9. Animal strike & roadkill - Chris & Rod to supply contacts for Boorowa, Rye Park and Yass; MH to follow up on wildlife hotline contacts <i>Tilt contacted local wildlife carer and has provided key contacts that are now included in the HSE portal for all workers. Was also raised in pre-start to ask workers to save the numbers in their phones.</i> COMPLETE</p>

	<p>10. When was the 4km radius for visual impact mitigation set? (JA). Was it the same before the Mod or did it change because of the Mod? <i>DPIE did not modify the Development Consent condition relating to the Visual Mitigation Program. The original Development Consent required the proponent to offer landscape screening out to 4km from the final turbine location. This remains the same.</i> COMPLETE</p>
	<p>11. What happens to removed trees? Are there any more trees marked for removal along Grassy Creek Road? (JA) <i>Removal of trees along Grassy Creek Rd has been completed. Hollows are salvaged where possible for retention. Vegetation is generally windrowed or mulched.</i> COMPLETE</p>
	<p>12. Confirm where water is being obtained from (question from JA asking whether we're getting water from creeks). <i>Zenviron have confirmed that no water is taken from creeks.</i> COMPLETE</p>

SIGNAGE





RYE PARK WIND FARM

CCC MEETING

15 FEBRUARY 2022



CONTENTS

1. PROJECT UPDATE

2. SCHEDULE OF WORKS

3. ENVIRONMENT AND COMPLIANCE

**4. STAKEHOLDERS AND COMMUNITY
FEEDBACK, ENQUIRIES & COMPLAINTS
CCC MEMBERS**

**5. PROJECT BENEFITS
EMPLOYMENT
BENEFIT SHARING PROGRAMS**



August 2021 – Financial Investment Decision made

December 2021 –Construction commenced:

- Public road upgrades continuing
- Commencement of Wind Farm construction in conjunction with TMP Staging Report Requirements
- Continuing establishing temporary facilities
- ARDG quarry supply update:
 - ARDG have commenced operations in Barrackville Quarry and material is being supplied to the RPWF via the main entrance on Dalton Road.
 - Processing operations area are scheduled to be completed by the end of March. Quarrying operations will then move to Fairburn Quarry (located inside the RPWF Project Area).



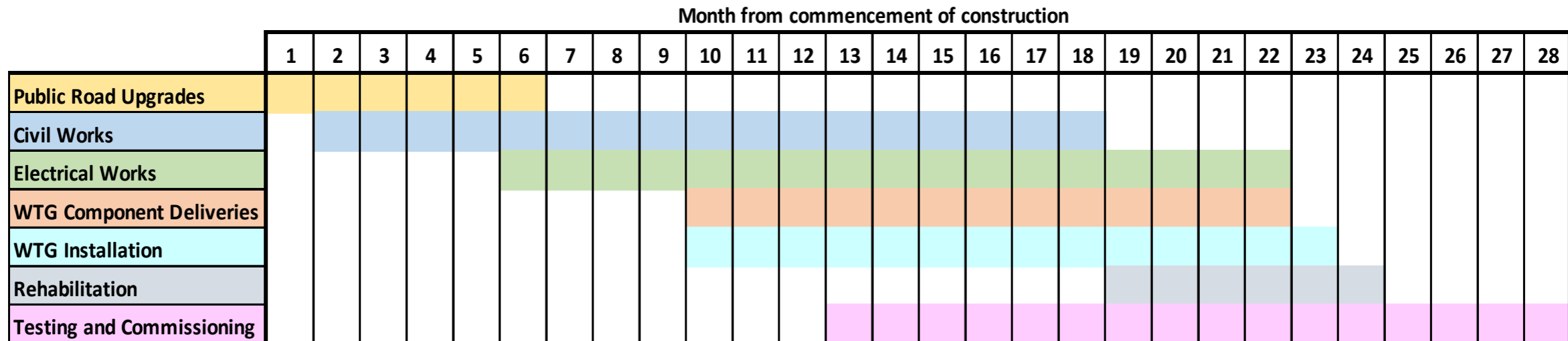
Wind Farm main entry being sealed

THE PROJECT INDICATIVE SCHEDULE



Project Programme:

- Construction will include road upgrades, wind farm construction (not including pre-construction activities) and commissioning
 - Construction Commencement – **1 December 2021**
 - Commissioning – From Late 2022
 - Operations – Early 2024



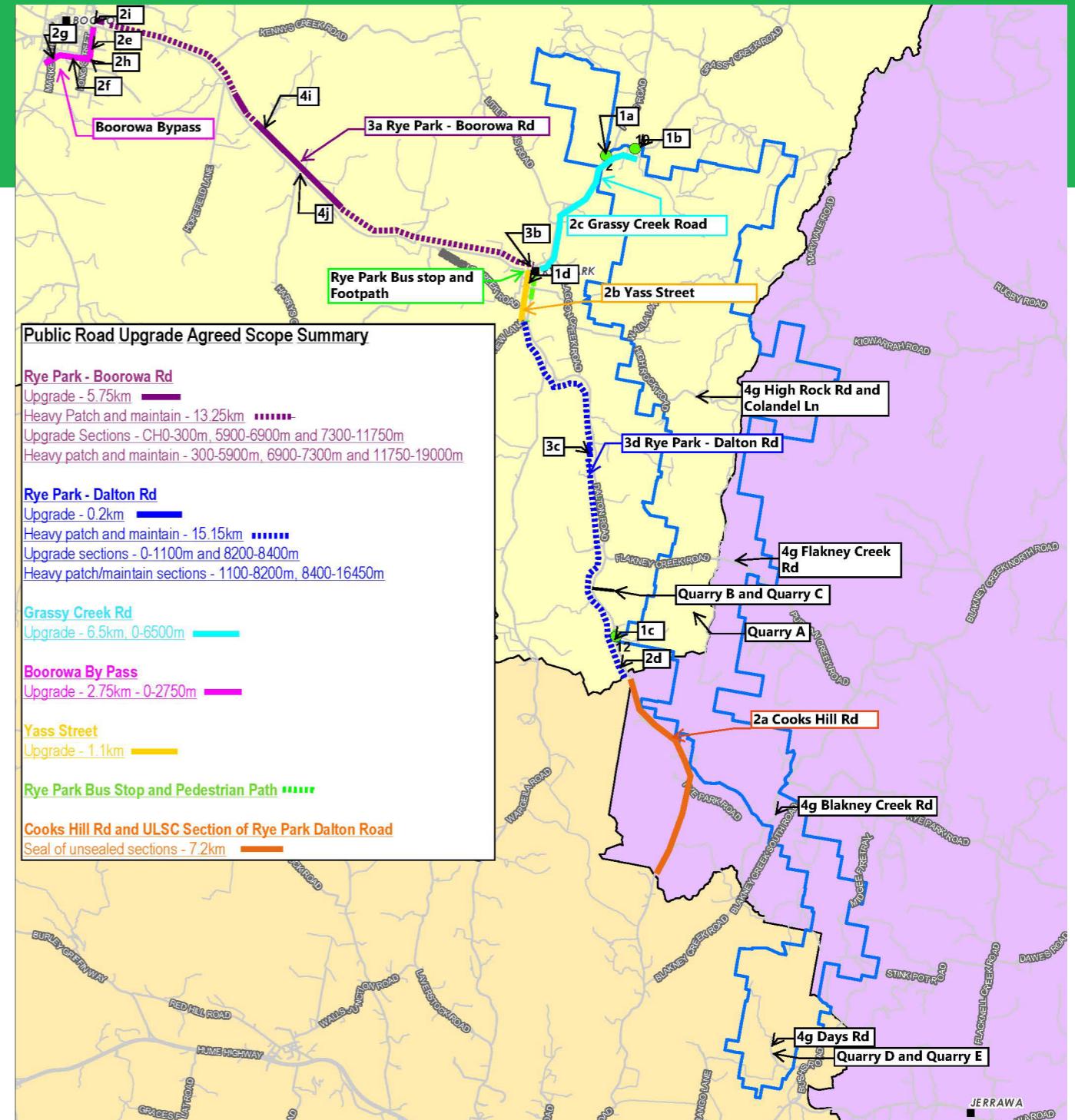
THE PROJECT

TRANSPORT, ROAD UPGRADES & SCHEDULE



Road Upgrades Update:

- Site Entry Intersections – Complete
- Grassy Creek Road – 700m sealed, 1.2km pavement placed. Subgrade complete approx. 40%
- Boorowa Bypass – 500m pavement gravel placed, drainage works underway. Pavement along Dillon and Long street to commence next week.
- Boorowa-Rye Park Rd – stabilisation commenced
- Rye Park-Dalton/ Cooks Hill Rd – make-safe rip and re-compact completed in Dec-21.
- Rye Park Footpath – landscape architect undertaking design works.



THE PROJECT

TRANSPORT, ROAD UPGRADES & SCHEDULE



Indicative Road Upgrades Schedule / commencement of wind farm construction:

	Stage 1				Stage 2											Stage 3										
Week	1	2	3	4	5	6	7	8	9	10	11	12	13	14	15	16	17	18	19	20	21	22	23	24	25	26
Site Entry 12 Intersection	█	█	█	█																						
Site Entry 2 Intersection	█	█	█	█																						
Site Entry 10 Intersection	█	█	█	█																						
Grassy Creek Road Formation	█	█	█	█	█	█	█	█	█	█	█	█	█	█	█											
Grassy Creek Road Seal											█	█	█	█	█											
Grassy Creek Culvert										█	█	█	█	█												
Grassy Creek Causeway													█	█	█											
Yass Street Formation	█	█	█	█	█	█	█	█	█	█	█	█	█	█	█											
Yass Street Seal											█	█														
Boorowa Bypass Formation	█	█	█	█	█	█	█																			
Boorowa Bypass Seal					█	█	█	█	█	█	█	█	█	█	█											
Rye Park bus stop and footpath																				█	█	█	█			
Heavy Patching/maintenance - RPB	█	█	█	█	█	█	█	█	█	█	█	█	█	█	█	█	█	█	█	█	█	█	█	█	█	█
Boorowa - RP Seal																						█	█	█	█	
Heavy Patching/maintenance - RPD	█	█	█	█	█	█	█	█	█	█	█	█	█	█	█	█	█	█	█	█	█	█	█	█	█	█
Boorowa-RP Road Formation					█	█	█	█	█	█	█	█	█	█	█	█	█	█	█	█	█	█	█	█	█	█
RP-Dalton Road Formation					█	█	█	█	█	█																
RP-Dalton Road Seal																█	█	█	█	█	█	█	█			
Cooks Hill Road and ULSC Section of Rye Park Dalton Road					█	█	█	█	█	█	█	█	█	█	█	█	█	█	█	█	█	█	█	█	█	█

Milestone 1

Milestone 2

Milestone 3

THE PROJECT

WHAT HAVE WE BEEN UP TO

Wind Farm Works

- Main Site Entrance – pavement from gate to site compound completed. First 200m sealed.
- Temporary Compound Facility – site offices established. Plumbing and electricity complete. Expected move in WC 21/02
- Access track stripping and formation works have commenced in the northern and central areas.



Site office being dropped at temporary compound



Lime stabilisation of Boorowa-Rye Park road



Dozer working on access track formation in northern area



Safety

- No incidents recorded, leading indicator reporting trending positively.
- COVID-19 Management Protocols in place in accordance with NSW regulations/guidelines incl. Rapid Antigen Testing

Environmental

- No incidents recorded, leading indicator reporting trending positively.
- Awaiting DPIE feedback regarding water from dam

Complaints and Compliance

- Complaints register published monthly on website
- Non-compliance – HV use of Cooks Hill Rd
- DPIE Compliance officer visited site in December
- 3 monthly compliance audit undertaken in February with no major non-conformances

*Knowledge
Sharing:
What do you want
to know more
about?*

**DPIE environmental
compliance officer**



Biodiversity Management

- Pre clearance surveys conducted prior to works commencing in:
 - Native vegetation sections along the public road work upgrade areas and,
 - Within the wind farm site prior to construction works occurring
- Exclusion flagging of targeted high value vegetation/habitat areas
- Ecologists on site during targeted habitat tree removal and hollow salvage

Traffic Management

- Monitoring of heavy vehicle movements into the project entries has commenced in line with TMP staging report requirements
- Heavy vehicle booking system implemented to manage heavy vehicle movements during TMP staging report (Stages 2-3)

Heritage management

- Cultural heritage salvage has been undertaken by archaeologists and Local Aboriginal Land Council representatives
- Exclusion fencing installed at no impact locales within proximity of upcoming work areas

Biodiversity / Offsets

- Continuing to work through the assessment of the land based offsets identified to formally register these offset sites with the Biodiversity Conservation Trust.
- Continue to identify options to fill any gaps not fulfilled by the identified sites (e.g. through new sites, or existing market credits)

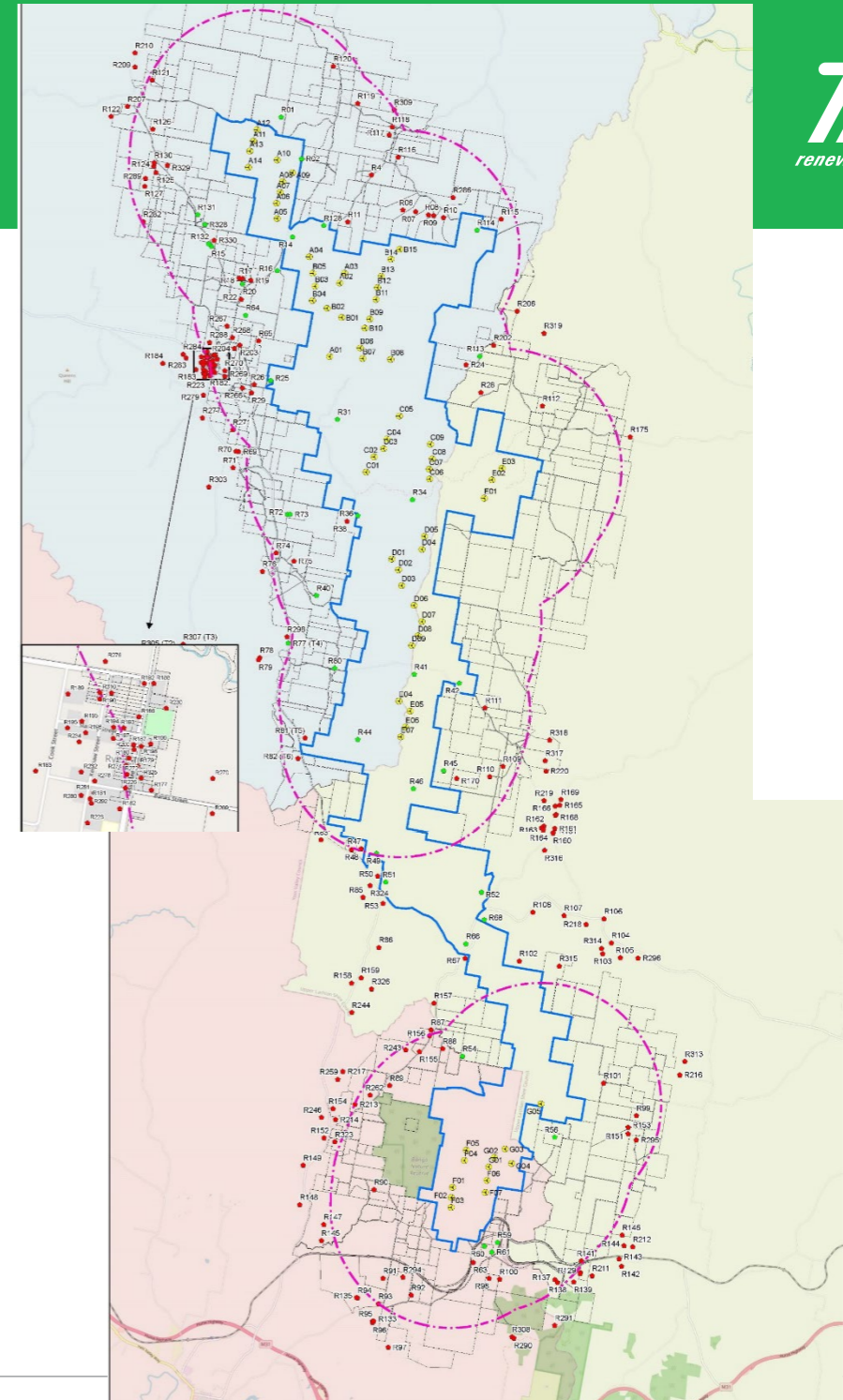
Pre-Commissioning Plans

- Drafting key management plans (NMP, BBAMP)



Visual Mitigation Program

- Non-associated residences within 4km of a wind turbine may be eligible for participation in the Visual Mitigation Program for the Project.
- Eligible residences may ask the Project to implement reasonable and feasible visual impact mitigation measures on their land to minimise the visual impacts of the Project on their residence.
- We have sent out letters to properties within 4km of a turbine, if you have received a letter and are interested (or have not received a letter and think we have missed you) please get in contact to discuss.
- **We have completed the first round of site visits with a landscape architect, and will arrange another round of visits over the next month.**
- **The program is open until November 2026** - interested parties can express their interest now, or once the turbines are installed.



STAKEHOLDER & COMMUNITY ENGAGEMENT FEEDBACK, ENQUIRIES & COMPLAINTS



Communication

- Newsletter – February issue out now (moving to bi-monthly)
- Fortnightly construction updates (weekly in peak periods) – via email and in community noticeboards
- Text message updates regarding construction and traffic impacts
- Ads in local papers – fortnightly as per publications listed
- CCC meetings (moving to bi-monthly)

Project Shopfront

- By appointment, and open for a regular day/time each week (**TBD**).
- Our 1800 WE TILT number remains always open to receive any questions about the Project and construction activities.

Complaints and Enquiries

- Direct email: complaints@tiltrenewables.com or people can use: ryeparkwindfarm@tiltrenewables.com
- Call: 1800 WE TILT (938 458)
- View our Complaints Management Procedure and Project Complaints Management Plan on the Project webpage

Yass Street Footpath

Feedback sought on the landscape plan from the community (e.g. drop in session, workshop or other)

Timing still to be advised



Gunning Lions Club



Current CCC Members

- David Johnson – Chair
- Geoff Frost – Yass Valley Councillor (*will be vacant*)
- Sara Brown – Community Representative
- Jayne Apps – Community Representative
- Christine Hawkins – Community Representative
- Andrew Field – Community Representative

Vacancies

- Hilltops Councillor (*TBD*)
- Upper Lachlan Councillor (*TBD*)
- Yass Valley Councillor (*TBD*)
- Community / Stakeholder Groups Representative x 3 vacancies

The Department makes decisions on who sits on the CCC.



CALLING ON CIVIC-MINDED COMMUNITY MEMBERS

We have three vacancies on the Rye Park Wind Farm Community Consultative Committee (CCC).

NOMINATIONS ARE NOW OPEN for the appointment of community members or representatives of a local stakeholder group to the Rye Park Wind Farm CCC.

CCC's provide a forum for open dialogue between the proponent and representatives of the local community, stakeholder groups and local councils on issues directly relating to the project.



We are looking for a mix of people who live locally or are members of a stakeholder group (community, environment, Aboriginal or industry) to join the Rye Park Wind Farm CCC.

Selection criteria: You will be expected to contribute constructively to committee discussions, attend around 4 - 6 meetings a year, and communicate information about the Rye Park Wind Farm between the committee and the broader community.

Please scan the QR code to find the CCC guidelines and nomination forms.

Nominations close 6 March 2022 and must be submitted to Chair David Johnson: johnsons08@inet.net.au

Please read the Guidelines carefully. The nomination to determination process will take around 8 weeks. The Chair reviews nominees and the Department makes the final decision.

Read the full update at: www.ryeparkwf.com.au | Call us: 1800 WE TILT (1800 938 458)



Employment Opportunities

- Boorowa Business Chamber presentation
- Yass Business Connect presentation
- Goods & Services Register – monthly update to contractors
- ICN Gateway monthly report



Contracts to be awarded include:

- Accommodation – short and long term
- Cabling and electrical
- Catering
- Cleaning
- Competent machine operators
- Concreters
- Domestic scale electricians
- Fencing
- Fuel supplies
- Grouters
- Labourers
- Laundry services
- Local hardware store
- Local mechanic and diesel mechanic (servicing of vehicles)
- Office supplies
- Plumbers
- Quarries
- Road upgrades – transport contracts
- Substation and O&M building – supply and build
- Skip bins
- Temp power (generators)
- Transport operators
- Vehicle tyre fit-out specialists
- Vehicle wash



Benefit Sharing Plan

- Discussions continue with the **Rye Park Rec Ground Management Committee** regarding the viability of a food truck ‘business’ to run out of Rye Park Village and/or the Construction Compound during construction.
- **Boorowa Country Education Foundation – scholarships** for high-school leavers / trainees in the direct region. Preference will be given to students closest to Rye Park Wind Farm. The program is set to launch in the coming month. A Rye Park Wind Farm bursary will support education expenses for successful applicants during construction (will continue under CEF during operations).
- **AWI Consulting – mental health program** for local schools (Boorowa Central School, Rye Park Public School, St Joseph’s School). Subsidise the cost of mental health assessments and profiles to support in-school counsellors in delivering the assistance students need.
- **Boorowa Community Landcare Group** – outside of compliance obligations around rehabilitation and offset site management, we are pursuing revegetation initiatives that will also include employee volunteerism



DISCUSSION

