

| | | | |
|---|---|------------------------------|--------------------------|
| Meeting title | RYE PARK Wind Farm Community Consultative Committee (CCC). Meeting #24 | | |
| Attendees | | | |
| David Johnson (Independent Chair) (DJ) | Cr Geoff Frost (Yass Valley Council) (GF) | | |
| Andrew Field (Community Member) (AF) | Martine Holberton, Community & Stakeholder Adviser, Tilt Renewables (MH) | | |
| Sara Brown (Community Member) (SB) | Matt Glass, Project Manager, Tilt Renewables (MG) | | |
| Jayne Apps (Community Member) (JA) | Andrew Galland, HSEC Manager, Tilt Renewables (AG) | | |
| Christine Hawkins (Community Member) (CH) | | | |
| Observers | | | |
| Rene Kuypers, Site Manager, Tilt Renewables (RK) | Cara Layton, Stakeholder & Env Manager, Tilt Renewables (CL) | | |
| Mark Selvaratnam, Asst Site Mgr, Tilt Renewables (MS) | | | |
| Apologies | | | |
| Cr James Wheelwright (Upper Lachlan Shire) | | | |
| Cr John Walker (Hilltops Council) | | | |
| Location | Soldiers Memorial Hall, Yass | Date & start time | 30 November 2021 at 7 pm |

| Topic | Discussion |
|---------------------------------------|--|
| 1. Welcome | <ul style="list-style-type: none"> The Chair welcomed everyone to the meeting and introduced himself to all present as the newly appointed independent chair of the CCC, and gave a brief outline of his background and experience. The Chair noted that the three Council representatives are all resigning from the CCC as they are not re-contesting the local government elections on 4 December. He thanked Cr Geoff Frost for attending this meeting, his last. |
| 2. Acknowledgement of Country | <ul style="list-style-type: none"> The Chair acknowledged the Traditional Owners of the land within the project area and on which we meet, being the Wiradjuri and Ngunnawal people, paying respects to their Elders past, present and emerging. |
| 3. Declarations of Interest | <ul style="list-style-type: none"> None |
| 4. Minutes of Previous Meeting | <ul style="list-style-type: none"> Minutes of the last meeting of the Rye Park CCC (#23) on 4 March 2021, were taken as approved. It was noted by the Chair that there had not been a CCC meeting since that time due to Covid restrictions, but that MH had provided updates by email to CCC members since then. |
| 5. Business Arising | <ul style="list-style-type: none"> It was noted by the Chair that the previous chair, Nic Carmody, had resigned from the CCC and his significant contributions to the CCC over a lengthy period were acknowledged. The committee requested that the new Chair write to Nic to formally thank him for his service. |
| 6. Correspondence | <ul style="list-style-type: none"> From DPIE on 6 Oct 2021, confirming DJ appointment as independent Chair Emails from Crs John Walker & James Wheelwright advising of their resignations from the CCC. |

7. Proponent's Report

Martine introduced the presentation and project updates from Tilt Renewables.

- Formal approval of the Rye Park Wind Farm was granted on 22 May 2017 and approval of MOD 1 was granted in April 2021 for up to 77 turbines. The final proposal is for 66 turbines;
- Noted that since August 2021, Tilt Renewables is part of the Powering Australia Renewables (PowAR) group, the largest owner and operator of wind and solar generation in Australia;
- Construction works commence tomorrow (1 Dec 2021) and the full program is currently expected to take 28 months.
- Initial works comprise public road upgrades, being undertaken by Tilt's contractors;
- A series of slides were presented (see attachment) and supporting information was provided by MH, CL, MG and AG.

Discussion ensued on a range of subjects including road usage by both heavy and light vehicles, extraction of water from bores, use of local contractors, re-instatement of quarries, micro-siting of turbines, visual mitigation program and mental health and wellbeing.

- It was noted that all heavy vehicles will access through Boorowa.
- AF queried the use of local roads by both heavy and light vehicles, and expressed concern regarding one fast driver using Blakeney Creek Rd in the mornings. He noted several drivers (locals & contractors) travelling too fast for conditions in his local area, particularly on Cooks Hill Rd). AG requested that AF provide plate numbers & details wherever possible, for follow up.
- MG & CL confirmed that the Cooks Hill Rd upgrade works will include sealing, safety improvements & line marking.
- AF raised the previous OHL strike incident during geotech works in June. It was confirmed that the incident was investigated, reported to Worksafe NSW and actions arose. The incident has been resolved.
- It was noted that in addition to the public road upgrades Tilt Renewables will design and construct a new footpath along Yass St Rye Park.
- CH noted that Tilt needs to reach out to the community more inclusively regarding things like tree removal and footpath works etc, as even CCC members have not been notified of proposed works; more consultation is needed in the new year on matters like these.
- Tilt noted that an arborist was contracted to undertake an assessment of all trees on Yass Street to use as part of consultation with the community on a 'beautification plan'.
- AF noted that with the wet weather there have been frogs and legless lizards out and asked how Tilt is managing this.
- Water is a major concern, particularly in the north where aquifers are salty and salinity an issue. AF noted that if bores extract too much water, salting will increase. CH and JA reported community concerns that water extraction from new bores could affect the bores of existing landowners.
- MG confirmed that contractors have gained approval from the Natural Resource Access Regulator (NRAR) to commence exploratory bore investigations including flow testing. AG noted that any access to

| | |
|------------------------------------|--|
| | <p>groundwater will involve approval through NRAR / NSW Water and include investigation of groundwater resources and regional aquifers.</p> <ul style="list-style-type: none"> • GF noted that Bango Wind Farm had restrictions on accessing water through the Yass Council standpipe during the drought. • CL provided an update on environmental compliance and approvals and noted that the Environmental Protection Licence (EPL) no. 21535 was granted by the EPA on 24 May 2021. • SB and CH asked about micro-siting of turbines. AG & CL explained the strict micro-siting protocols that apply; the current design is well advanced and very detailed and any micro-siting will be minimal. • The issue of quarry rehabilitation was raised; community representatives expressed that they understood that ARDG quarries do not require final rehabilitation. Tilt Renewables understood that rehabilitation would be required but offered to check the consents to confirm this for the CCC. MG confirmed he would check this. • The visual mitigation program (VMP) was raised by SB and CH and concerns expressed for landowners that fall outside the 4km trigger distance. CH's house is approx. 500m outside the 4km zone and MH and CL recommended that she still register interest in the program so her request can be assessed. • CH asked about VMP eligibility surrounding powerlines. • AF mentioned the Gunning Noticeboard as another community publication to advertise in. MH noted this as an action. • Mental health issues for residents and surrounding landowners were discussed and CH and GF noted programs and coordinators in the area of mental health and suicide prevention. Suggestions were made for local groups that could benefit from funding support. MH will attempt to make contact. CH reported that there are a large number of people who have suffered from mental health issues directly related to wind farm turbines and they are in need of help. • SB requested that the term 'drought-proofing' is inappropriate and not be used when referring to the financial benefits flowing to host landowners. MH confirmed that this will be removed from all future and current online material. • JA raised concerns re-school bus stops and interaction with project traffic, such as on Kennys Creek Rd in particular. The Long St/Rye Park Rd intersection in Boorowa will require widening. MG confirmed that all road works will be in accordance with Council requirements, including road furniture and signage. Over-size vehicles will be restricted in their timing to avoid school bus operations. |
| <p>8.Other Agenda Items</p> | <ul style="list-style-type: none"> • None |
| <p>9.General Business</p> | <ul style="list-style-type: none"> • The suggestion of getting specialists or consultants to attend future CCC meetings was discussed as this would allow more information to be available on subjects such as ecology, traffic, heritage, landscape etc. CH said the information should be balanced and include all points of view. • It was noted that construction works will cease during the Christmas shutdown period from 23 December to 4 January. |

| | |
|--------------------------------|--|
| | <ul style="list-style-type: none"> • The Chair noted that new CCC representatives for each of the three councils will be required and that the councils will be asked to provide nominated individuals in early 2022. • It was also noted that there are vacancies on the committee for community or stakeholder reps, and advertisements will be placed soon for additional members (up to seven are allowed) |
| <p>Next Meeting</p> | <p>Meeting closed: 9.30 pm.</p> <p>The Chair thanked all for their attendance and wished everyone a safe and happy Christmas holiday period.</p> <p>Next meeting: Scheduled for Tuesday 15 February 2022, at the same venue.</p> |
| <p>ACTIONS REQUIRED</p> | <ol style="list-style-type: none"> 1. That the Chair (DJ) write to Nic Carmody to thank him for his role as the previous Chair, and to acknowledge his contribution to the CCC over many years. COMPLETE 2. MG to check consents for ARDG quarries regarding final rehabilitation requirements. COMPLETE <ol style="list-style-type: none"> a. Quarrying activities shall occur as per the staging nominated in the approved plans. Rehabilitation in accordance with the approved plans shall commence within 3 months of the competition of quarrying and shall be completed within 12 months of the competition of quarrying. 3. MH to initiate advertising program to advise of three vacancies on the CCC for community or stakeholder reps. IN PROGRESS 4. MH to contact the three councils to obtain nominations for individuals as council representatives on the CCC (in early 2022). IN PROGRESS 5. MH to remove reference to drought-proofing in communication materials COMPLETE 6. MH to initiate contact with Gunning Noticeboard and start placing project updates in it. COMPLETE 7. Tilt undertook to indicate where line-marking is taking place on Cooks Hill Road. 8. CL to provide detail on how Tilt is managing compliance obligations around frogs and legless lizards. COMPLETE <p>An environmental framework has been developed for the Project, including an Environmental Management Strategy (EMS), and associated management plans. These plans will be implemented to ensure appropriate environmental management throughout construction, operational and decommissioning phases of the Project. The plans prepared in accordance with the requirements of the Development Consent and EPBC Approval are available on the Project website: https://www.tiltrenewables.com/assets-and-projects/Rye-Park-Wind-Farm/project-approvals-and-applications/</p> <p>The Biodiversity Management Plan describes the management measures that will be implemented to avoid, minimise, and mitigate</p> |

unavoidable biodiversity impacts and to ensure that the project complies with the requirements of the Development Consent and EPBC Approval, including:

- Minimising native vegetation clearance and loss of key fauna habitat and potential impact through microsting, vegetation disturbance process, pre-clearance and tree felling procedure and protocols associated with inadvertent record of threaten species during construction
- Minimisation of indirect and species-specific impact on targeted threaten flora and fauna species within the disturbance footprint, through fire prevention and control and waste management and disposal.
- Protecting Native Vegetation and Key Fauna Habitat Outside the Disturbance Area, through erosion and sediment control, hazardous chemical management and measures around waterway crossings.
- Rehabilitation and revegetating disturbance areas (including rehabilitation completion criteria), maximizing salvage of biological resources and commits to an artificial hollow installation program.
- Protocol for post clearance inspections and summarises the requirements for pre-construction and final biodiversity calculations to be completed (and resulting biodiversity offsets to be secured).
- The BMP also includes specific performance targets, monitoring, reporting and auditing requirements and regular reviews.

The avoidance, management and mitigation measures to be implemented as part of the BMP have been prepared with an overarching objective to reduce the Development's impact on all biodiversity matters. This includes specific measures for key species (including the Striped Legless Lizard). Section 5 of the BMP sets out the 'Biodiversity Avoidance, Management and Mitigation Measures'.

9. CL to check VMP requirements around project powerlines passing a neighbour's outlook. **COMPLETE**

In relation to the visual mitigation program, Schedule X Condition 3 of the Development Consent requires the program to be implemented for non-associated residences within 4km of a wind turbine. Please see extract below:

Visual Impact Mitigation

3. For a period of 5 years from the commencement of construction, the owner of any non-associated residence within 4 km of any wind turbine may ask the Applicant to implement visual impact mitigation measures on their land to minimise the visual impacts of the development on their residence (including its curtilage).

Upon receiving such a written request from the owner of these residences, the Applicant must implement appropriate mitigation measures (such as landscaping and vegetation screening) in consultation with the owner.

These mitigation measures must be reasonable and feasible, aimed at reducing the visibility of the wind turbines from the residence and its curtilage, and commensurate with the level of visual impact on the residence.

All mitigation measures must be implemented within 12 months of receiving the written request, unless the **Planning Secretary** agrees otherwise.

If the Applicant and the owner cannot agree on the measures to be implemented, or there is a dispute about the implementation of these measures, then either party may refer the matter to the **Planning Secretary** for resolution.

Notes:

- *To avoid any doubt, mitigation measures are not required to be implemented to reduce the visibility of wind turbines from any other locations on the property other than the residence and its curtilage.*
- *The identification of appropriate visual impact mitigation measures will be more effective following the construction of the wind turbines. While owners may ask for the implementation of visual impact mitigation measures shortly after the commencement of construction, they should consider the merits of delaying this request until the relevant wind turbines are visible from their residence.*

In relation to other infrastructure Schedule 3 Condition 4 of the Development Consent requires:

Visual Appearance

4. The Applicant must:
 - (a) minimise the off-site visual impacts of the development;
 - (b) ensure the wind turbines are:
 - painted off white/grey, unless otherwise agreed by the **Planning Secretary**; and
 - finished with a surface treatment that minimises the potential for glare and reflection;
 - (c) ensure the visual appearance of all ancillary infrastructure (including paint colours), blends in as far as possible with the surrounding landscape; and
 - (d) not mount any advertising signs or logos on wind turbines or ancillary infrastructure.



RYE PARK WIND FARM

CCC MEETING

30 NOVEMBER 2021

CONTENTS

1. INTRODUCTIONS

WHO IS TILT RENEWABLES?
TILT TEAM & CONTRACTORS

2. THE PROJECT

OVERVIEW
INFRASTRUCTURE LAYOUT
INDICATIVE SCHEDULE
WHAT HAVE WE BEEN DOING
WHATS NEXT

3. ENVIRONMENT AND COMPLIANCE

4. STAKEHOLDERS AND COMMUNITY

HOW TO STAY INFORMED
FEEDBACK, ENQUIRIES & COMPLAINTS
CCC MEMBERS – LOOKING AHEAD TO 2022

5. PROJECT BENEFITS

EMPLOYMENT
BENEFIT SHARING PROGRAMS



INTRODUCTIONS

WHO IS TILT RENEWABLES?



Tilt Renewables, part of leading Australian-owned renewable energy consortium, Powering Australian Renewables (PowAR) – an owner, operator and developer of renewable energy and storage projects in Australia and now the largest owner of wind and solar generation in Australia – and the largest renewable energy generator after Snowy Hydro.

Our vision is:

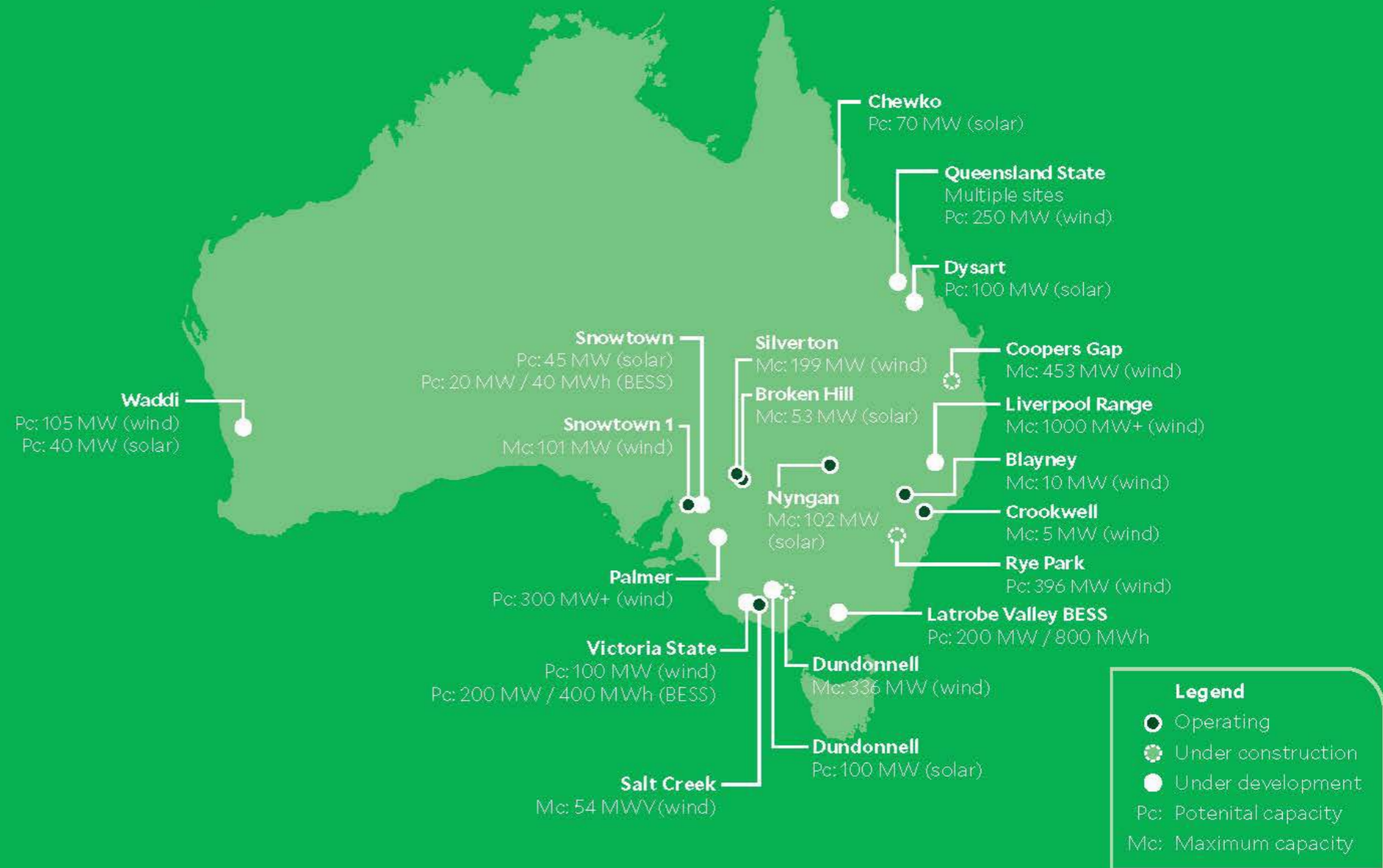
To drive the transition to renewables through everything we do.

Our vision focuses on us helping create the world we want to be part of and to look for those opportunities in everything we do.

We recognise that a cleaner, more energised future starts with the things we do and the things we inspire others to do, day to day, week to week.

We bring decades of experience with a demonstrated commitment to the communities where we operate, to ensure we continue to support regional Australia's prosperity through the energy transition.

ASSET MAP



INTRODUCTIONS

TILT RENEWABLES TEAM & CONTRACTORS



Key members of the Tilt Renewables team:



Geoff Dutailis – CEO



Tom Villiers – Executive General Manager, Delivery



Matthew Glass – Senior Project Manager



Rene Kuypers – Site Manager



Mark Selvaratnam – Assistant Project Manager



Andrew G
– Site HSEC Manager



Cara Layton – Manager, Stakeholders and Environment



Martine Holberton – Stakeholder and Community Engagement Advisor



Malcolm McCaskill – Land Development Manager

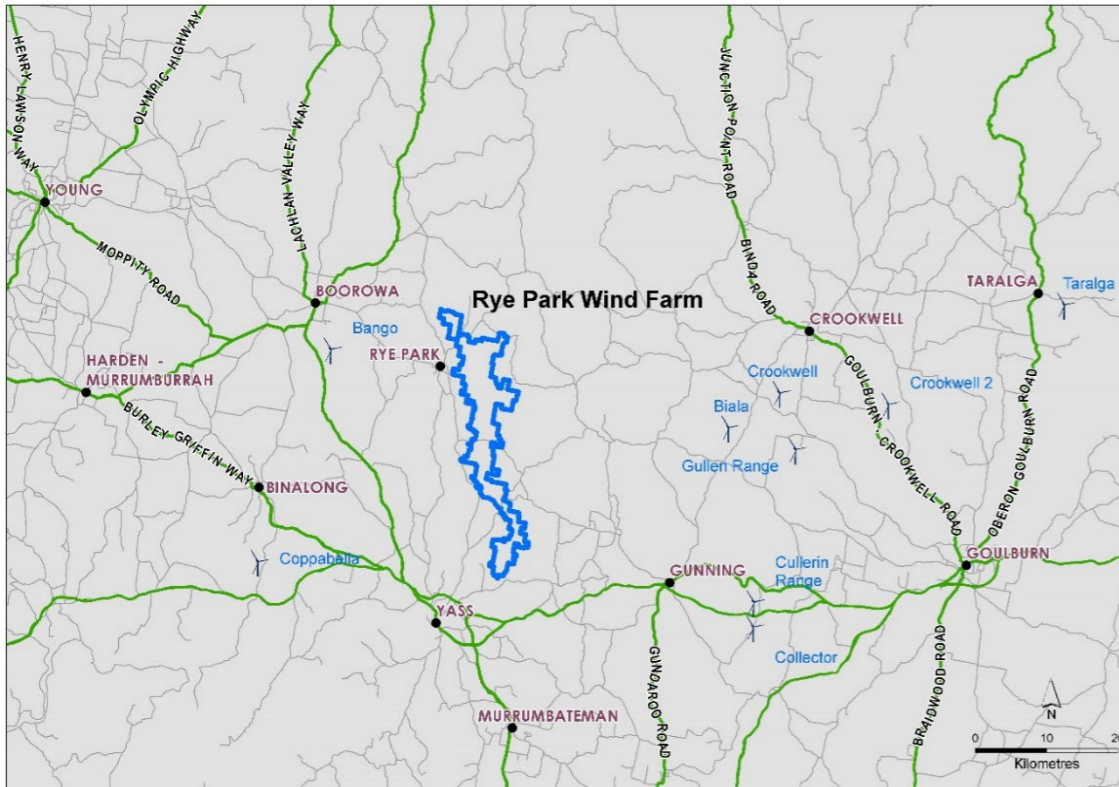
Contractors:

- *Zenviron*: Project Manager – Sam Hillard
Site Manager – Mark Cha
- *Vestas*: Project Coordinator – Kate Drain

| Contract | Contractor |
|---------------------------------------|------------|
| Turbine Supply and Install | Vestas |
| Electrical and Civil Balance of Plant | Zenviron |
| Grid Connection | Lumea |

THE PROJECT OVERVIEW

- **No. of Turbines:** a total of 66 WTGs, at micro-sited locations
- **Capacity:** 396MW
- **Turbine:** Vestas V162 – tip height of 200m, rotor 162m, hub height 119m.



PROJECT SNAPSHOT

Number of Turbines: 66

Blade Tip Height: 200m

Operations & Maintenance Buildings: 1

Collection Substations: 1

Connection Substations: 1

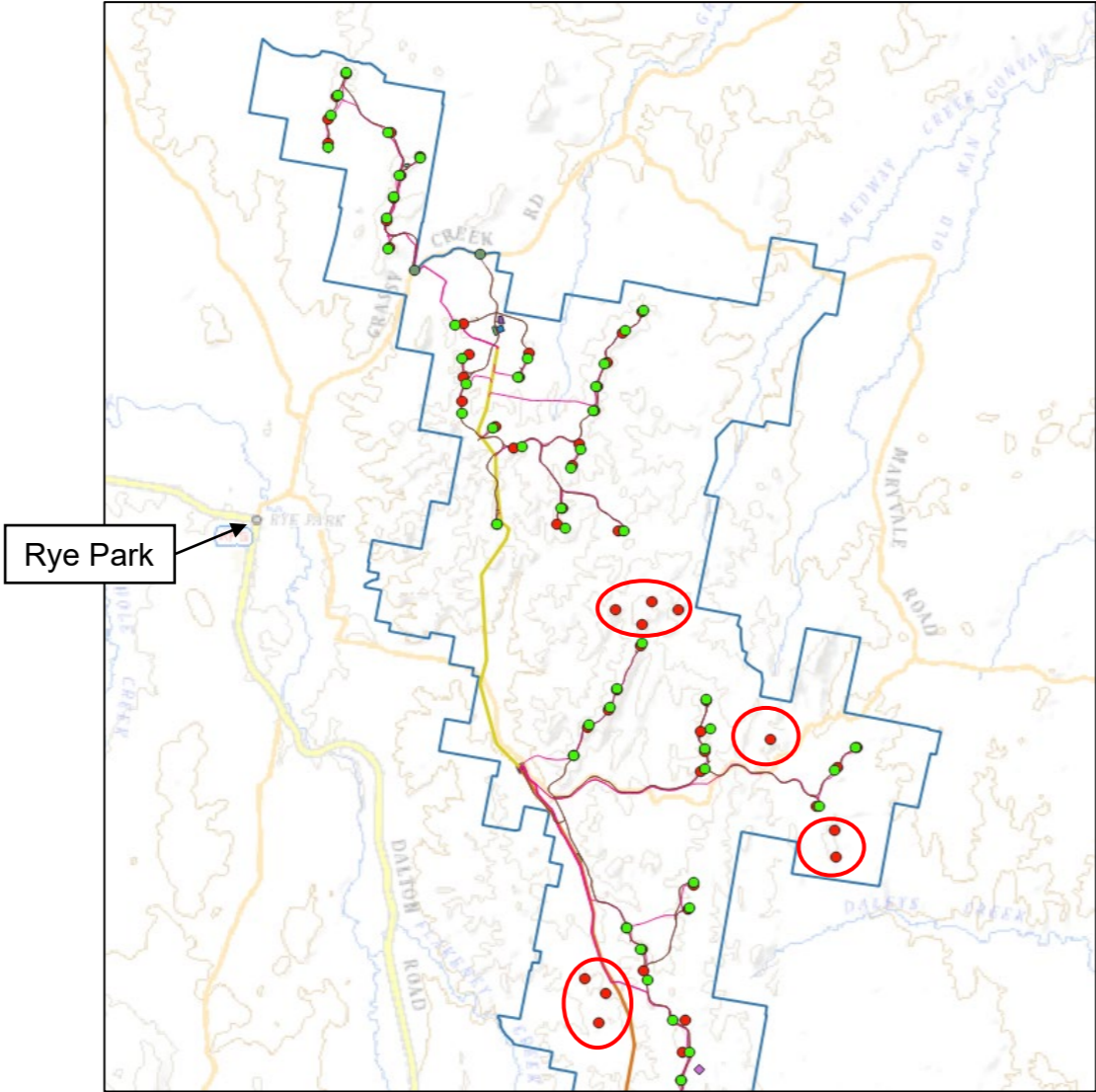
Concrete Batch Plants: 3

Construction Compounds: 3

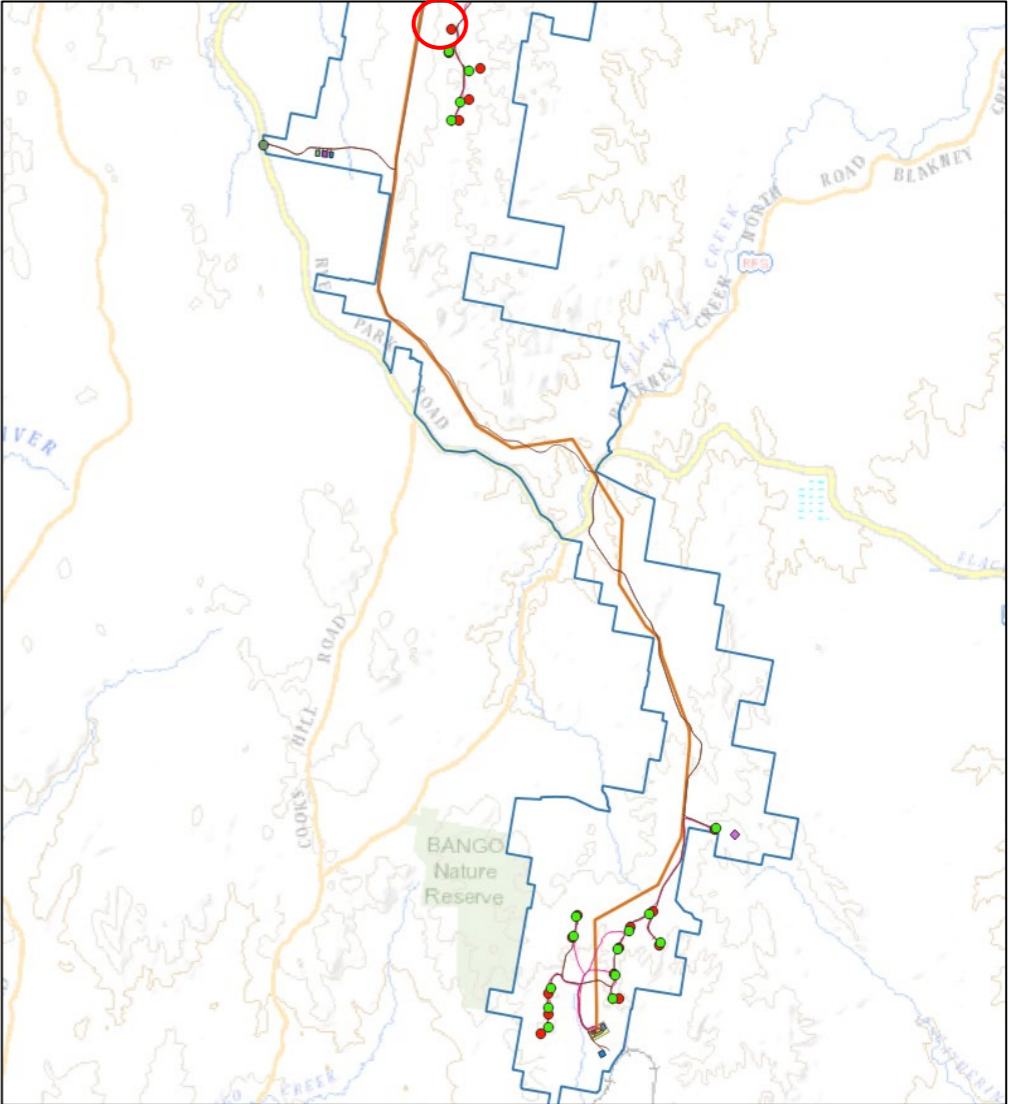
THE PROJECT INFRASTRUCTURE LAYOUT



Online Map: [LINK](#)



Removed
WTGs



THE PROJECT

TRANSPORT, ROAD UPGRADES & SCHEDULE



THE PROJECT

WHAT HAVE WE BEEN UPTO

August 2021 – Financial Investment Decision made

August to November 2021 – Pre-construction activities including:

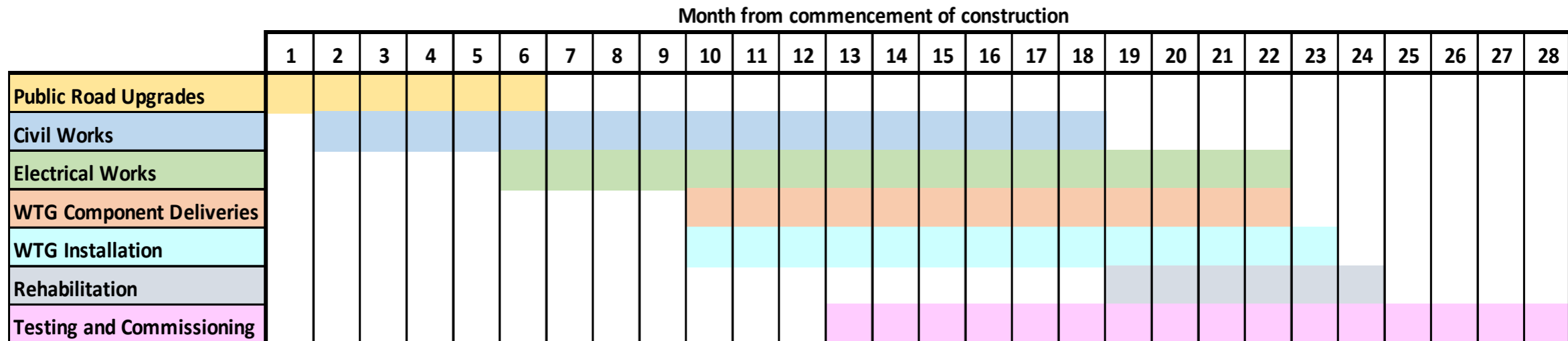
- Geotechnical investigations
- Environmental and heritage surveys
- Topographic surveys
- Construction of minor access roads
- Commenced establishment of temporary facilities
- Finalising key plans and management plans



Earthworks commenced on temporary site compound

Project Programme:

- Construction will include road upgrades, wind farm construction (not including pre-construction activities) and commissioning
 - Construction Commencement – **1 December 2021**
 - Commissioning – From Late 2022
 - Operations – Early 2024



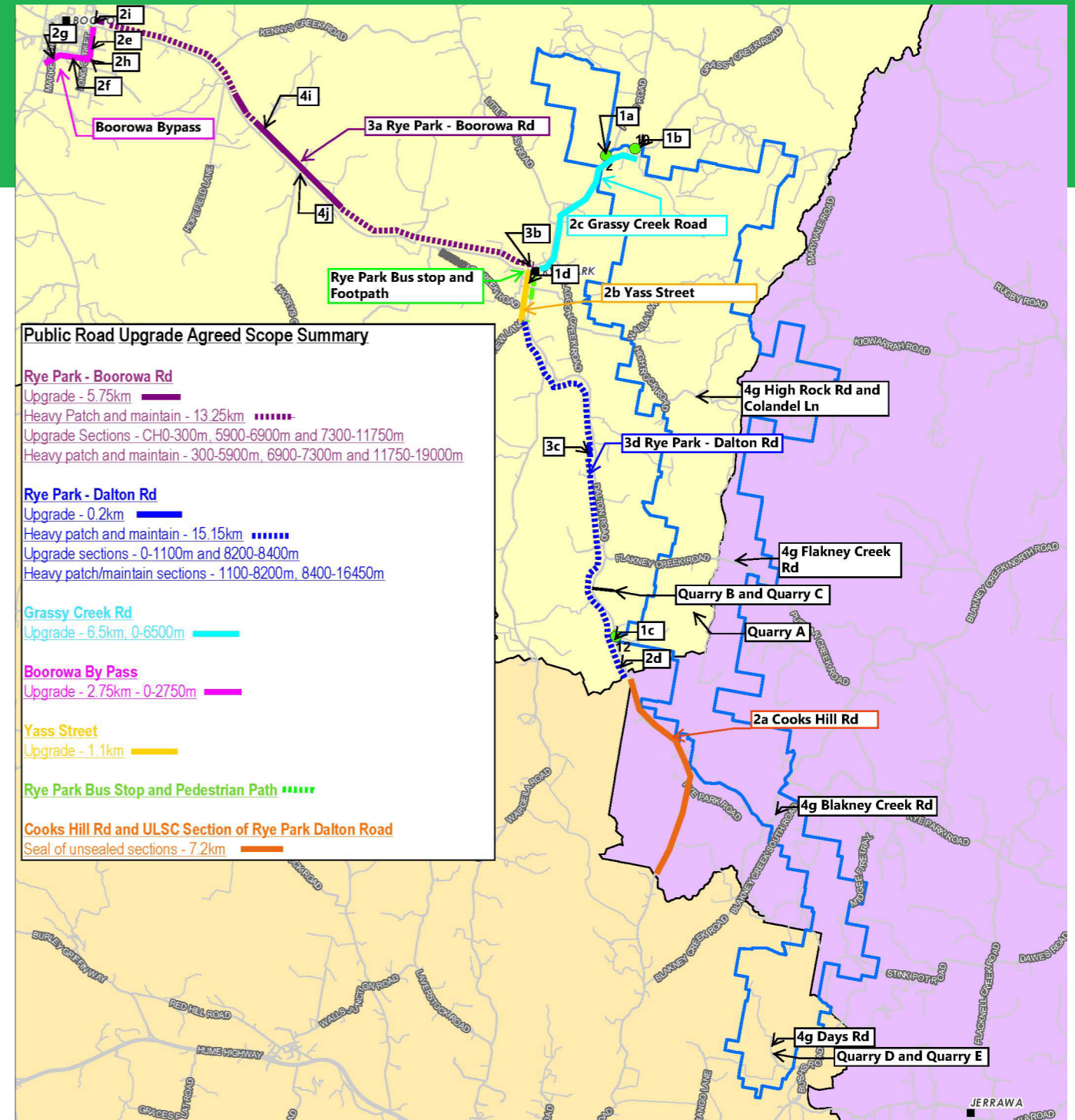
THE PROJECT

TRANSPORT, ROAD UPGRADES & SCHEDULE



Road Upgrades Overview:

- A significant amount of investigation and scoping has been undertaken to assess the transport route and determine the detailed upgrade specification to be designed and constructed,
- The design has been undertaken in consultation with the road authorities (e.g., the Councils and Transport for NSW).
- In response to concerns regarding pedestrian use of Yass St, received from Council and the community, we are planning augmentation of the bus stop (improving access) and integration of pedestrian usage of the road reserve between the bus stop and the Rye Park Primary School.
- The area at the entrance of Rye Park Community Hall will also be graded and sealed.
- Cooks Hill Rd/Rye Park-Dalton Rd

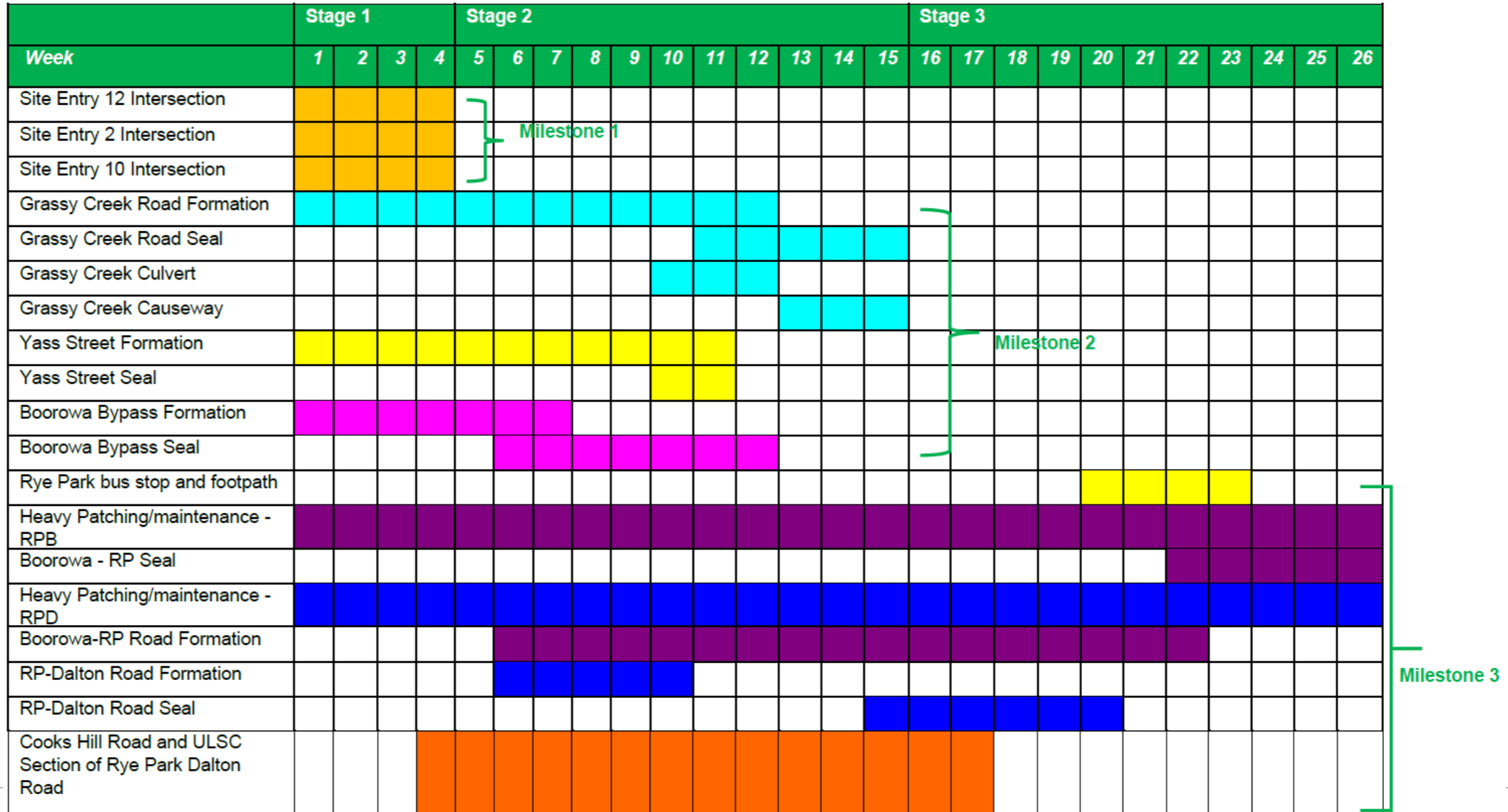


THE PROJECT

TRANSPORT, ROAD UPGRADES & SCHEDULE



Indicative Road Upgrades Schedule / commencement of wind farm construction:

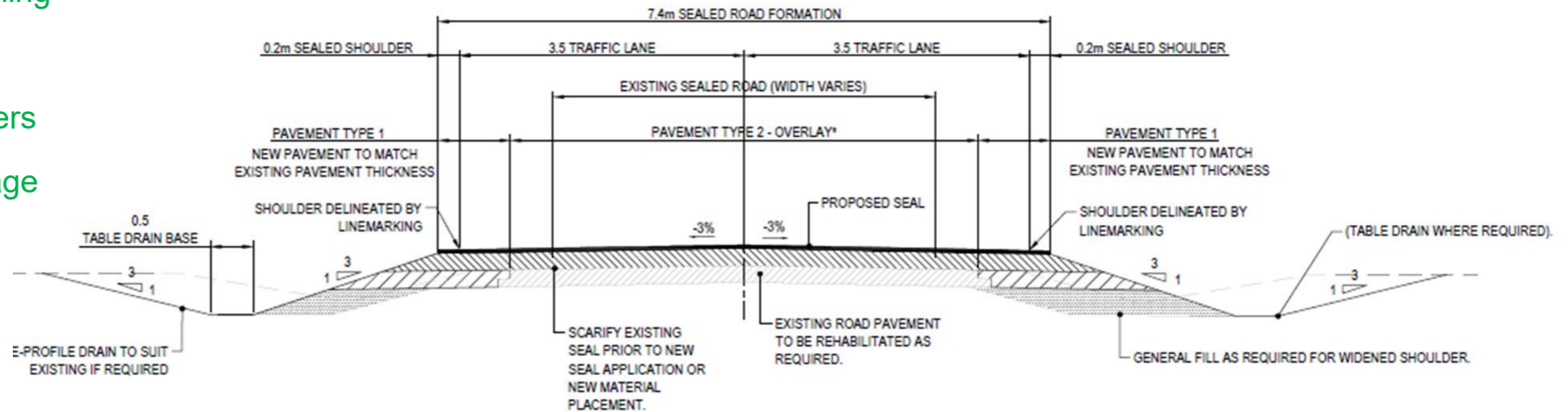


WHAT'S NEXT? PUBLIC ROAD UPGRADES

~19km of Public Road Upgrades to be completed

Varying degrees of upgrade based on current state of road

- Rebuild
- New seal/patching
- Widen seal
- Extend shoulders
- Improve drainage



LOCAL ROAD UPGRADE TYPICAL CROSS SECTION

SCALE 1:20

Yass St Footpath

Following Council and community feedback at the Information day, changes to process and timing have been adopted.

Process

- Preliminary re-design to accommodate feedback and suggestions where possible balancing against constraint eg:
 - Location
 - Impact to trees
 - Compliance with Council specification
- Incorporate any further feedback from Council and Community regarding re-design – ***we are here.***
- Engagement with landscape architect to prepare Yass St landscape plan
- Further feedback sort on the landscape plan from the community (e.g. drop in session, workshop or other)
- Finalisation of design and commencement of construction

THE PROJECT

KEY CONSTRUCTION MATTERS

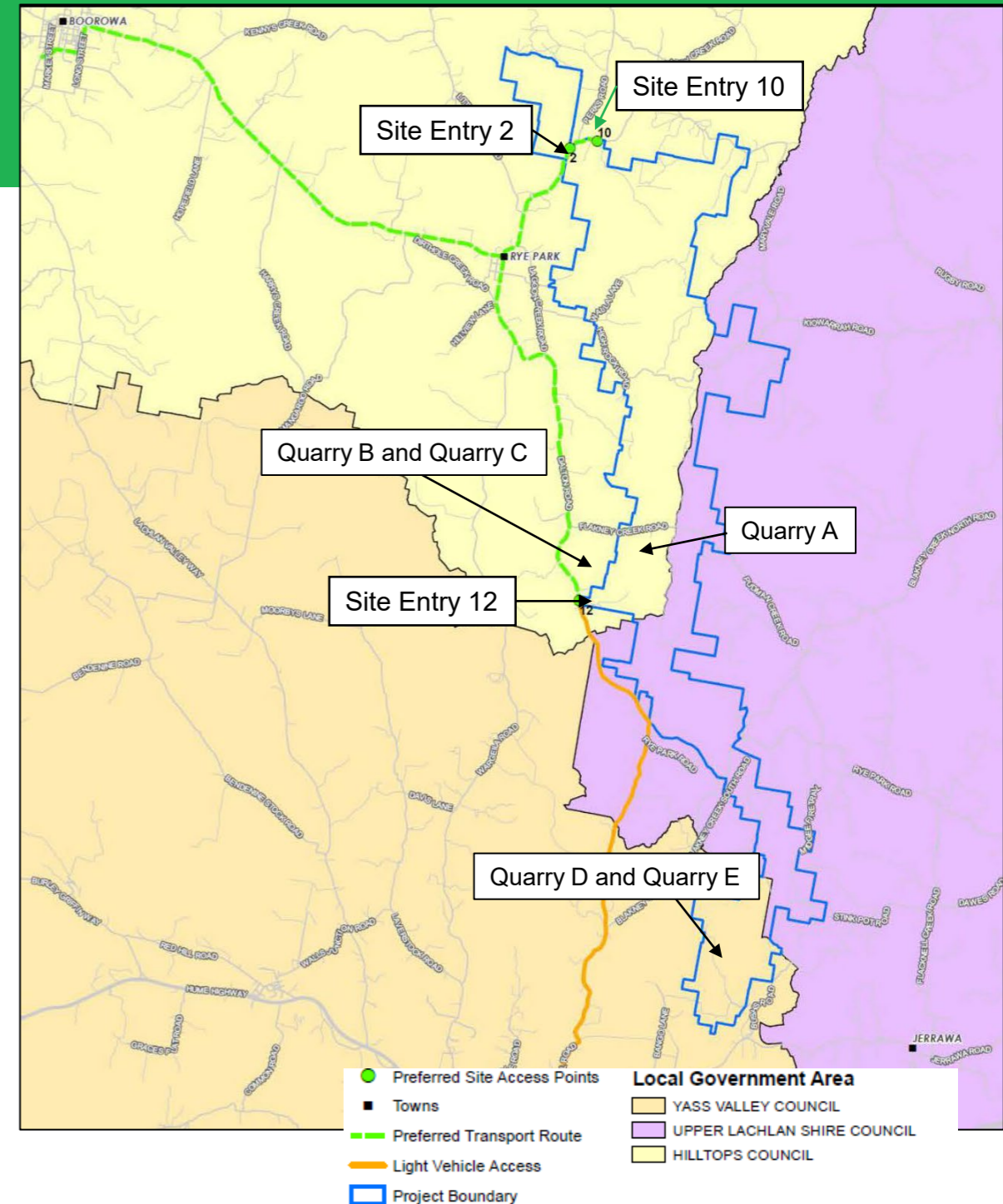


Transport routes

- Port of Newcastle via Sydney confirmed for Components
- Heavy Vehicles follow same route from Boorowa to Site
- Light vehicles from Yass will use Cooks Hill Rd

Material Sourcing Strategy

- Significant effort to identify sources and supplies of quarry materials and water
- Quarry options on and close to site
- Other potential quarries at Galong, Murrumbateman and Bogo for public roads, concrete and sealing aggregates
- Water – Sourced on site e.g. bores. Potable and concrete water likely from Yass. Bore applications pending, drilling underway.





Environmental Benefits

- Clean and renewable source of energy
- The Project will generate enough electricity to power 215,000 average Australian homes annually
- Offsets the emission of more than 960,000 tonnes of CO2 per annum – the equivalent to removing approximately 300,000 cars from the roads each year
- Construction carbon emissions offset within first year of operation
- Zero carbon emissions during operation of the wind farm

Environmental Assessments

- Extensive environmental, heritage and social impact assessments (including heritage) have been undertaken for the Project.

Key Approvals

- Development Consent was granted on 22 May 2017, and modification (MOD 1) approved 15 April 2021
- EPBC Approval (EPBC 2020/8837) granted on 1 June 2021
- Environment Protection License No. 21535 granted on 24 May 2021

Biodiversity / Offsets

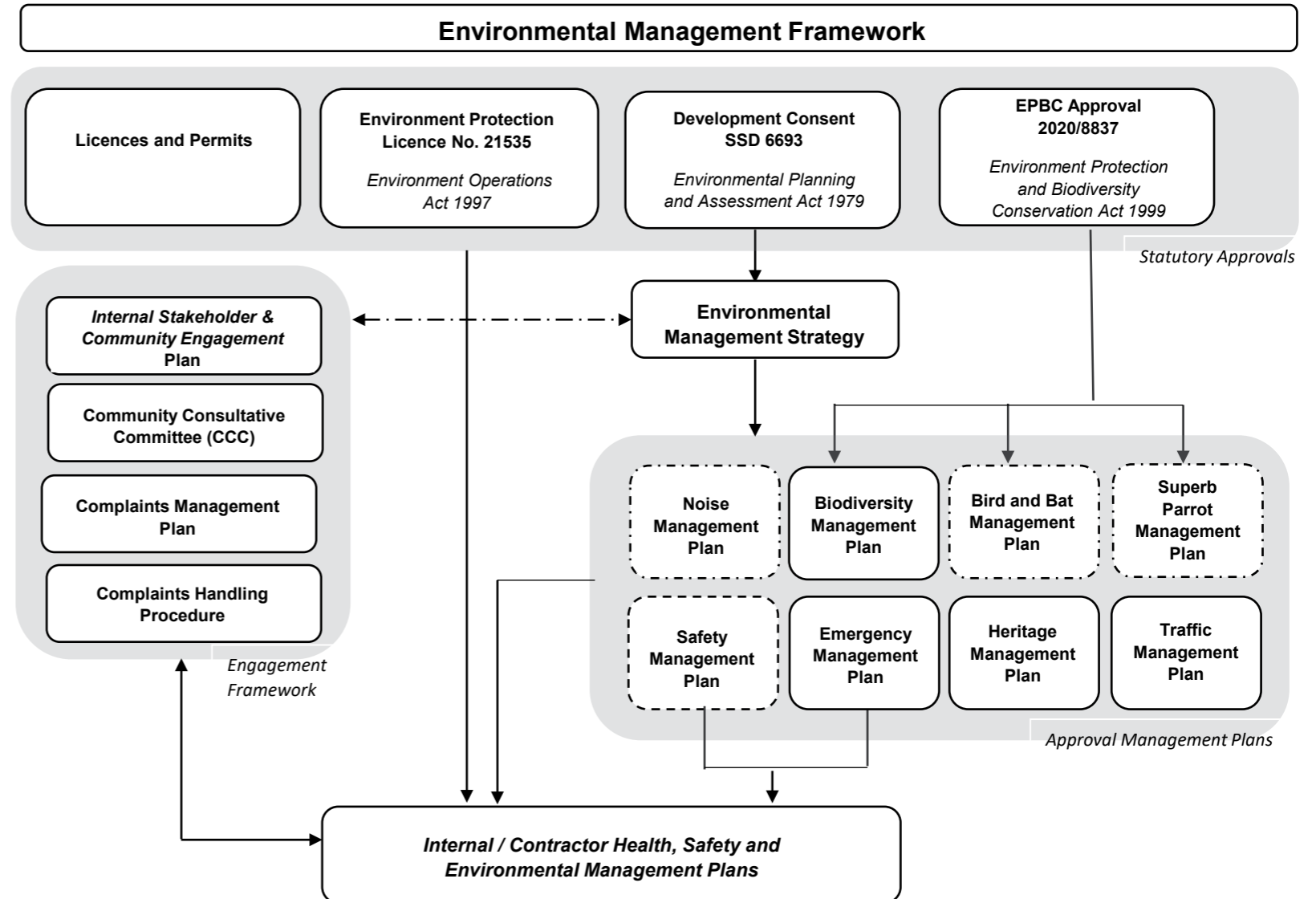
- Updated biodiversity calculations have been prepared for the pre-construction final layout.
- The Project will retire biodiversity credits associated with the assessed and approved loss of biodiversity as a result of the construction of the wind farm



Key Management Plans and Pre-Construction Requirements

- An environmental framework has been developed for the Project
- This framework will be implemented to ensure appropriate environmental management throughout construction, operational and decommissioning phases
- The plans will be available on the project website (all pre-construction plans are now available)

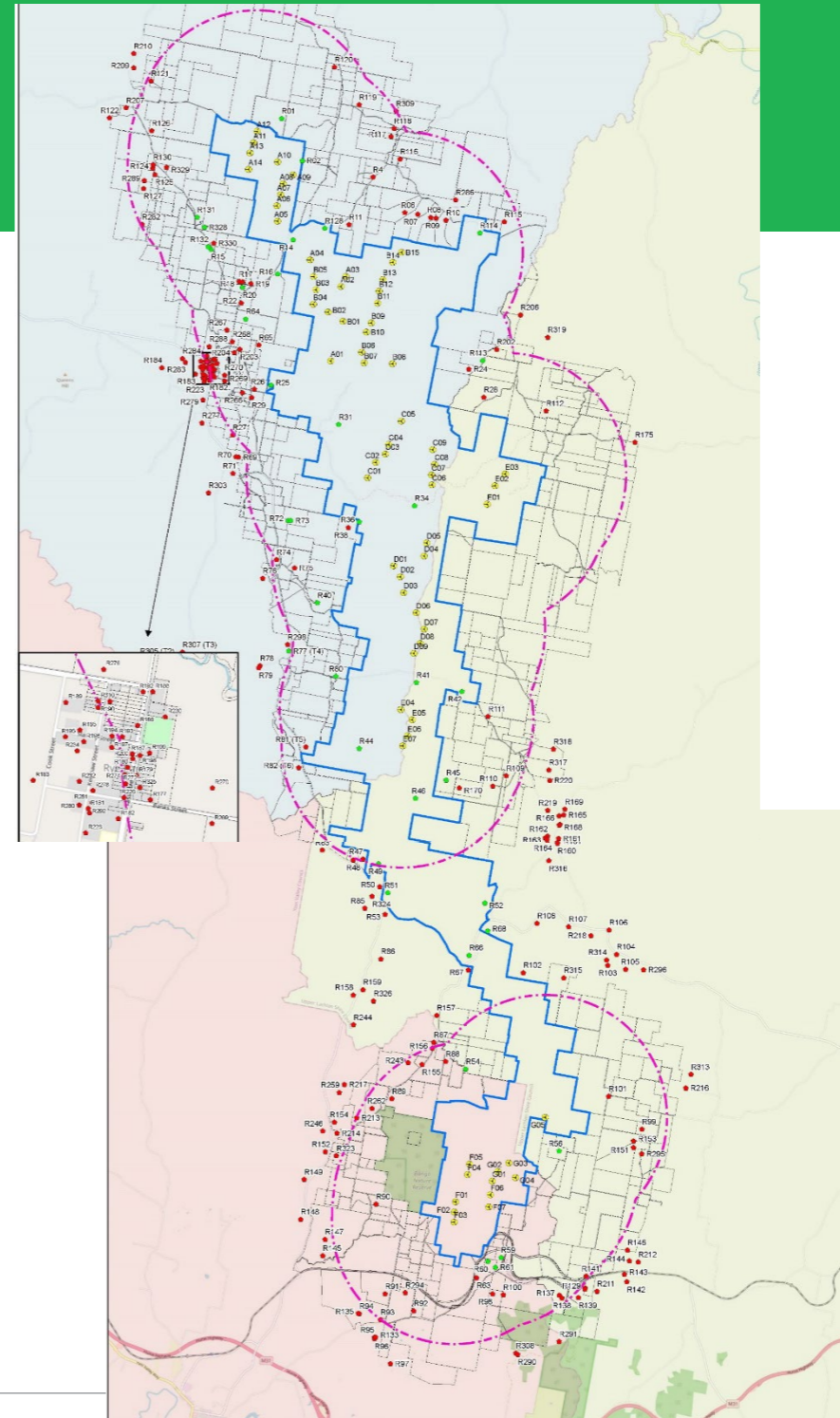
A summary of the management measures within each of the plans is available in the Project fact sheet.





Visual Mitigation Program

- Non-associated residences within 4km of a wind turbine may be eligible for participation in the Visual Mitigation Program for the Project.
- Eligible residences may ask the Project to implement visual impact mitigation measures on their land to minimise the visual impacts of the Project on their residence.
- We have sent out letters to properties within 4km of a turbine, if you have received a letter and are interested (or have not received a letter and think we have missed you) please get in contact to discuss.



STAKEHOLDER & COMMUNITY HOW TO STAY INFORMED?



How you can stay up to date as the Project progresses?

- Bi-monthly **newsletter** – via email and post
- Fortnightly **construction updates** (weekly in peak periods) – via email
- **Text message updates** regarding construction and traffic impacts
- **Ads in local papers** – fortnightly as per publications listed
- Quarterly **CCC meetings**
- **Shopfront operations** (regular times each week in 2022)
- **1800 WE TILT** – CALL US if you have any questions or concerns as we commence and continue through construction. We will do our best to answer every call and where a call is missed, leave your name and number so we can call you back.
- **Online feedback form** – linked on our the Project webpage

Rye Park Wind Farm

Financial close for 396MW Rye Park Wind Farm

Newsletter Edition **12** September 2021

Tilt Renewables, part of leading Australian renewable energy provider Powering Australian Renewables (PowAR), is pleased to announce that construction of the Rye Park Wind Farm (RPWF), the largest ever to be built in NSW, will commence this year having achieved financial close.

The 396MW wind farm will create an estimated 250 direct jobs during the construction phase and up to 10 ongoing regional jobs during its operational life, with opportunities for local workers.

When fully commissioned in 2024, the RPWF will be the largest operating wind farm in NSW and will be a key component of the growing PowAR renewable energy portfolio.

RPWF will utilise 66 Vestas EnVentus V162-6.0MW wind turbines, the latest technology solution from Vestas, maximising energy production and environmental benefits. These turbines are pictured in the photo above though the ones we will install will not have any logos on them.

Construction activity on site will commence in Q4 2021 under a multi-contract structure with the following delivery partners:

| Contract | Contractor |
|---------------------------------------|------------|
| Turbine Supply and Install | Vestas |
| Electrical and Civil Balance of Plant | Zenviron |
| Grid Connection | Lumea |

For more information, or to provide any feedback, please visit the project website www.ryeparkwindfarm.com.au

PROJECT SNAPSHOT

Project Component: Final Approved Project

Number of Turbines: 66

Blade Tip Height: 200m

Operations & Maintenance Buildings: 1

Collection Substations: 1

Connection Substations: 1

Concrete Batch Plants: 3

Construction Compounds: 3





Project Shopfront

- Project Shopfront during construction at the Rye Park Community Hall.
- By appointment, and open for a regular day/time each week (TBD).
- Our 1800 WE TILT number remains always open to receive any questions about the Project and construction activities.

Community Consultative Committee

- Minutes are located on the Project webpage.
- *You can contact the Chair of the Rye Park CCC via email, should you wish to be connected with any of the Committee Members. A link to email the Chair directly is on the Project webpage under 'Community'.*

Complaints and Enquiries:

ryeparkwindfarm@tiltrenewables.com

1800 WE TILT (938 458)

OR

complaints@tiltrenewables.com

1800 306 118

You can view our Complaints Management Procedure and Project Complaints Management Plan on the Project webpage

Yass Street Footpath

Feedback sought on the landscape plan from the community (e.g. drop in session, workshop or other)

Timing to be advised (early-2022)

*Knowledge Sharing:
What do you want to know more about?*

Current CCC Members

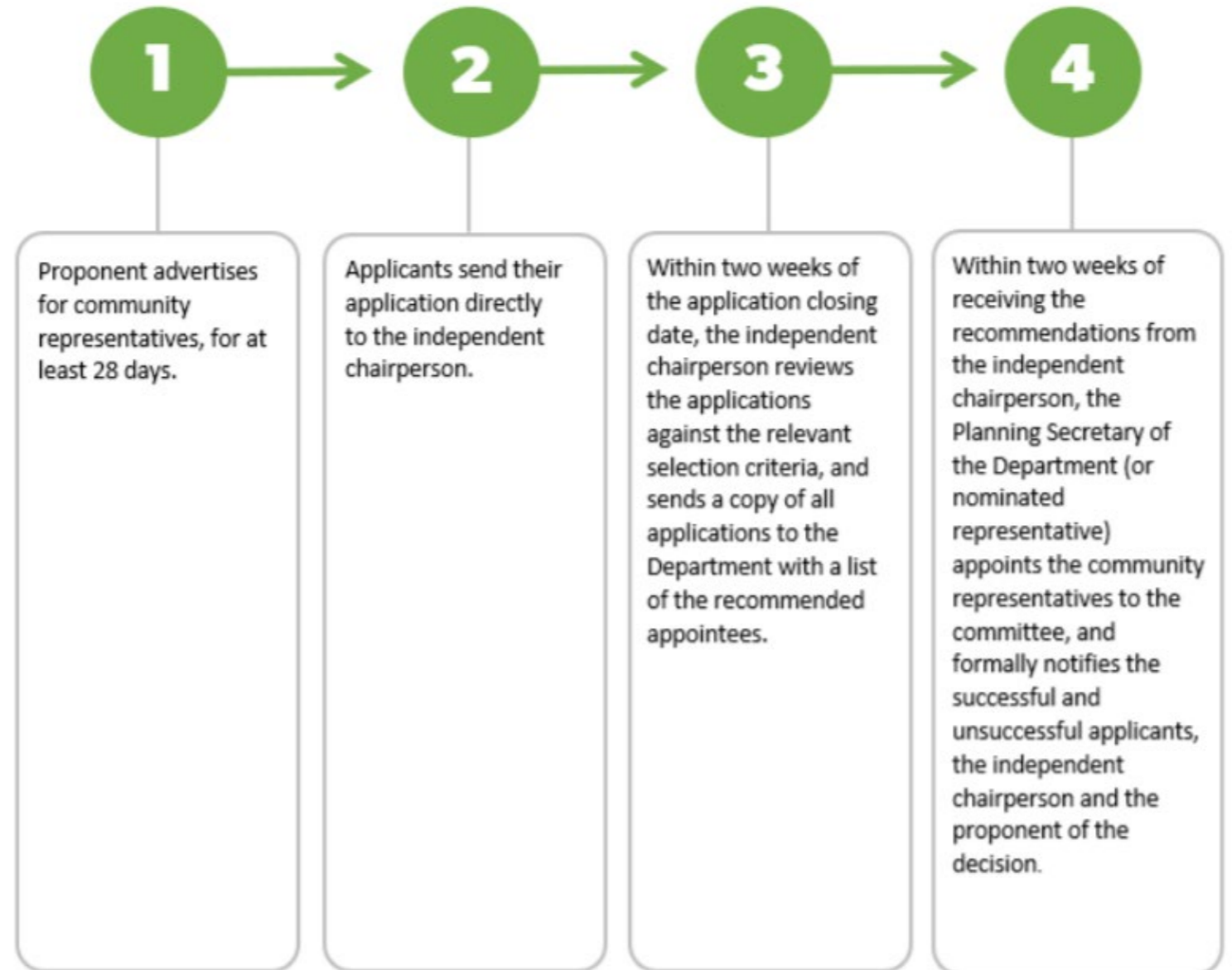
- David Johnson – Chair
- Geoff Frost – Yass Valley Councillor (*will be vacant*)
- Sara Brown – Community Representative
- Jayne Apps – Community Representative
- Christine Hawkins – Community Representative
- Andrew Field – Community Representative

Vacancies

- Hilltops Councillor (*John Walker not running for Council*)
- Upper Lachlan Councillor (*James Wheelwright not running for Council*)
- Community / Stakeholder Groups Representative x 3

We will be advertising for Expressions of Interest to be part of the CCC in the forthcoming newsletter.

The Department makes decisions on who sits on the CCC.





Employment Opportunities

- Around 250 jobs during construction
- Around 10 jobs during long-term operations (30 years)
- Supporting local businesses and creating jobs by buying local goods and services



Contracts to be awarded include:

- Accommodation – short and long term
- Cabling and electrical
- Catering
- Cleaning
- Competent machine operators
- Concreters
- Domestic scale electricians
- Fencing
- Fuel supplies
- Grouters
- Labourers
- Laundry services
- Local hardware store
- Local mechanic and diesel mechanic (servicing of vehicles)
- Office supplies
- Plumbers
- Quarries
- Road upgrades – transport contracts
- Substation and O&M building – supply and build
- Skip bins
- Temp power (generators)
- Transport operators
- Vehicle tyre fit-out specialists
- Vehicle wash



Connecting subcontractors and suppliers

- To augment opportunities for local businesses, the Rye Park Wind Farm has been listed on the Industry Capability Network (ICN) Gateway.
- ICN is an independent business network providing an online tool to connect subcontractors and suppliers with projects. Work packages currently available to submit an EOI for are listed in the 'Work Packages' tab on our Project page.

| Subcontractor Procurement Packages Status | Awarded | Underway | Not Commenced |
|--|---------|----------|---------------|
| Engineering/ Offsite Services | 25% | 75% | 0% |
| Substation Yard/ Primary Plant | 71% | 29% | 0% |
| Buildings/ Substation Secondary Systems | 0% | 50% | 50% |
| Collector System/ Cables, Conductor and Accessories/ Overhead Line | 50% | 20% | 30% |
| Site Services | 0% | 87% | 13% |
| Environmental | 0% | 100% | 0% |

GOODS & SERVICES REGISTER

To register interest in providing goods or services for the Project, please hover over the QR code or visit the Rye Park project webpage www.ryeparkwf.com.au and complete the linked form under the Employment section.



Regional Economic Benefits

- A VPA of \$230,000 per year (adjusted for CPI) in community funding, for the life of the wind farm
- Around \$3 million in direct payments to local landowners during operations
- Significant local and regional economic benefits
- Drought-proof and post-retirement income stream for farmers

Benefit Sharing Plan

- A Benefit Sharing Plan is being developed that covers local, regional and educational initiatives.
- Details of the programs included as part of the plan will be shared on the webpage, and continue through the construction phase of the Project.

Community Enhancement Fund

- A Community Enhancement Fund will commence when the Project starts operating.
- Annual funding each year (adjusted annually to increase in CPI):
 - Hilltops Council: \$162,500
 - Upper Lachlan Shire Council: \$40,000
 - Yass Valley Council: \$27,500
- Independent community groups overseen by the Yass Valley, Hilltops and Upper Lachlan councils will administer the funds.
- At least 20% of the funds will be allocated to educational needs.

Other Programs

- Neighbour participation agreements
- Educational, mental health and economic development programs

DISCUSSION

