

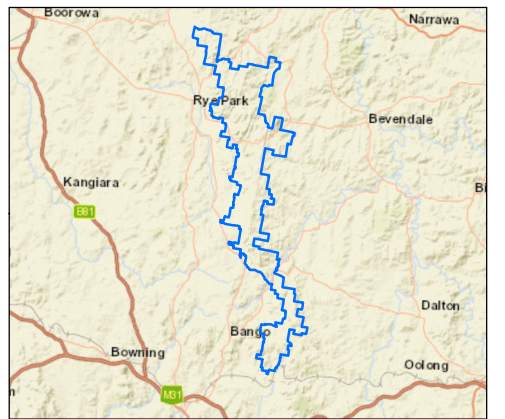
- Approved Site Access Points
- Preferred Site Access Points
- Towns
- Approved Transport Routes
- Preferred Transport Route
- Project Boundary
- Approved Project Boundary

- Local Government Area**
- YASS VALLEY COUNCIL
  - UPPER LACHLAN SHIRE COUNCIL
  - HILLTOPS COUNCIL

Date: 31/03/2020  
Version: A

Kilometres

GDA 1994 MGA Zone 55  
1:140,000



Document Path: G:\GIS\Development\_Sites\NSWRyePark\Maps\Working\RPWF\_130\_Over-dimensional and Heavy Vehicle Access\_20200331.mxd

# Rye Park Wind Farm

## Over-dimensional and Heavy Vehicle Access

