

# Waipipi Wind Farm

Newsletter  
Edition

06

June  
2020

## Wind Farm Update

The first shipment of 6 hubs, 11 towers and 30 blades has arrived at Port Taranaki. Locals can expect blades and tower sections on the roads heading to the wind farm construction site over the next four months.

Over one third (13) of the 31 turbine foundations have now been poured, with more excavations and steel fixing underway at multiple locations. Civil works have continued with expansion of the access track network reaching more than 20km. Construction of the operations and maintenance facilities are ongoing.

Since commencing construction, the following works have been completed:

- Upgraded 4.5km of road between SH3 and the Dryden Road site entrance
- Established the site compound and site facilities
- Constructed an onsite access track network of more than 20km
- Completed the ground improvement works at 20 of the 31 turbine locations
- Completed 13 of the 31 turbine foundations
- Laid around 12km (of a total of 14 km) of underground cabling between the turbines
- Installed 85 out of 100 transmission line poles from the site to the Waverley substation

## Key Project facts

**Installed capacity:**  
133 MW

**Annual production:**  
450 GWh per year

**Wind turbine type:**  
SWT130 – 4.3 MW

**Number of turbines:**  
31

**Tower height:**  
95 metres

**Blade height:**  
160 metres

**Rotor diameter:**  
130 metres

**Site area:**  
980 hectares

**Transmission line:**  
Eleven kilometres of 110kV overhead transmission on monopoles

**Construction Timeframe:**  
Approximately 18 months

Over the next three months the civil and electrical contractors will continue with the ground improvement works, completing turbine foundations, cable laying and installing the onsite wind farm substation. Wind turbine installation will begin at the end of June.

---

### Community engagement

Tilt Renewables is committed to engaging with the community to ensure there is consistent, transparent and open communication. A Community Consultative Group has been established and is made up of representatives from within the Patea and Waverley communities.

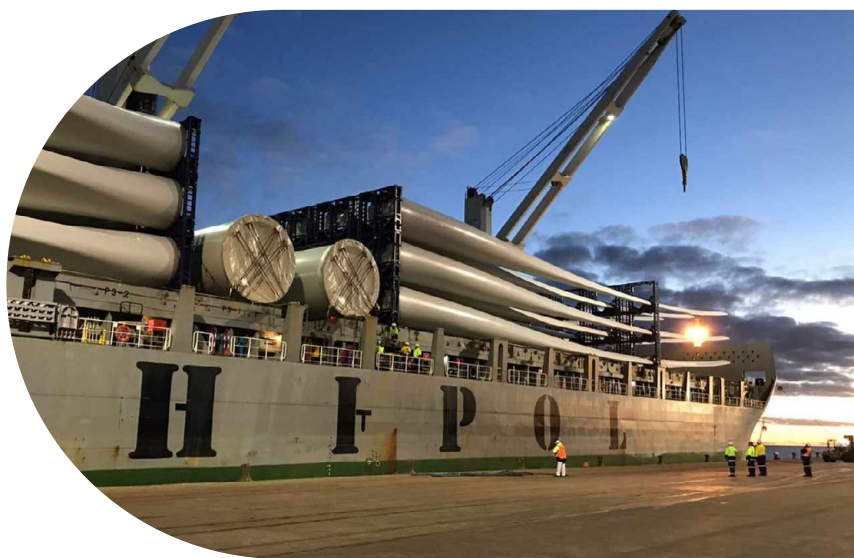
The objective of the Community Consultative Group is to facilitate information flow between Tilt Renewables and the community. The group will be an on-going point of contact for the community.

The functions of the Community Consultative Group include: acting as a forum for relaying community concerns about the construction and on-going operation of the Waipipi Wind Farm to the Tilt Renewables team, developing appropriate means of addressing (where possible) and managing those concerns, and reviewing the implementation of measures to resolve and manage community concerns.

---

### COVID-19 Update

Construction activities at Waipipi Wind Farm have resumed under the current COVID-19 Alert Levels, as directed by the New Zealand Government. Specific and diligent measures are being implemented to reduce the risk of spread of COVID-19.



Photos clockwise from top right: Blade offloading, First shipment in New Plymouth port, Turbine rotor lift