

# Weekly Construction Update - #27

## Dundonnell Wind Farm

*Thermal blankets cover poured foundation*

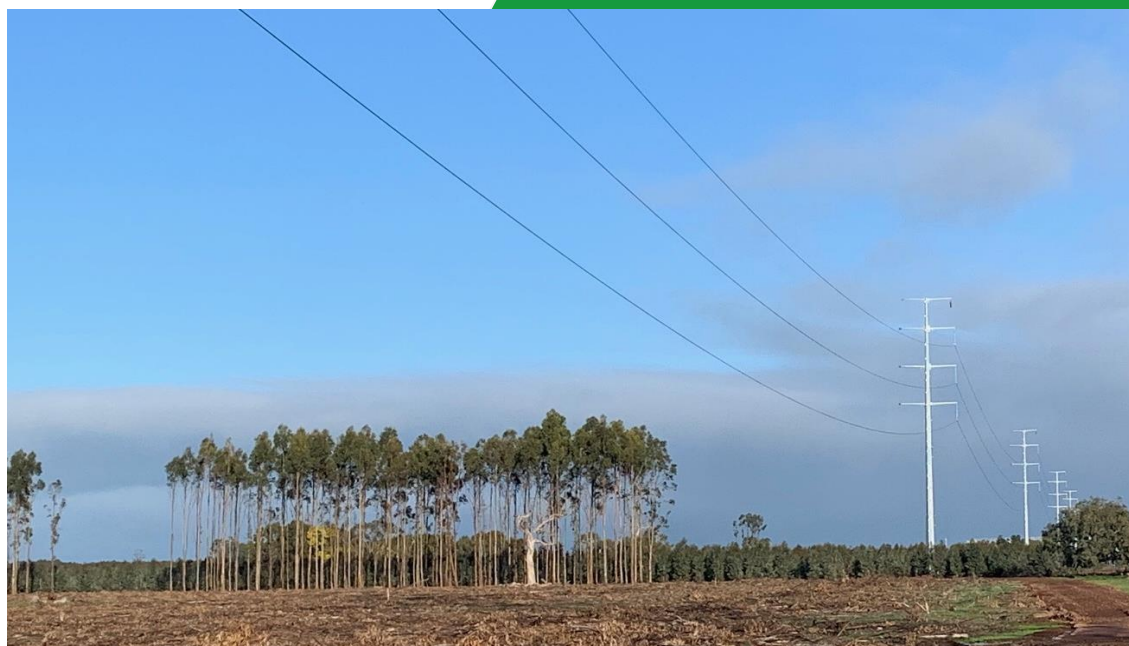


The Tilt Renewables team is underway with constructing the \$560 million Dundonnell Wind Farm located approximately 23 kilometres north-east of Mortlake, in the Western District of Victoria. AusNet Services are constructing 38 kilometres of 220kV transmission line and a substation which will connect the wind farm to the electricity network.

Multiple civil work fronts continue to power through foundation construction, with 1 foundation poured, steel installation at 6 more and excavations underway at another 15. 3 hardstands have been completed another 18 currently being worked on. Substation civil works are progressing with transformer bund now poured and fire wall reinforcing steel installation has commenced. Production of gravel and rock products continued at the quarry.

At the Transmission Line worksite, stringing works on the first ~5km section continued to progress. 80 foundations have been poured and 30 transmission poles have been erected. Pole foundation construction progressed along Mortlake-Ararat Road and will continue next week, please keep an eye out for the traffic controls that will be in place. Civil works at the Blue Gums Substation are continuing.

**News Piece of the Week:** *“Being exposed to the cold winter nights, newly poured wind turbine foundations can get chilly at night. Luckily crews have found a cure, now wrapping our foundations in thermal blankets to ensure the concrete curing process can continue without a hitch.”*



*First section of transmission line strung*

