

Liverpool Range Wind Farm

Fact Sheet
RTS Project

Social Impact, Accommodation and Employment Fact Sheet



In September 2022, a modification application was submitted to the Department of Planning and Environment (DPE) for the Liverpool Range Wind Farm (Modified Project). In response to submissions received during the public exhibition period, we have made a number of changes to the Project. These changes are outlined in the Response to Submissions (RTS) Report and the Amendment Report. The reports will be assessed by DPE, who will then make a determination on the application. These reports contain information about how the RTS Project is different from the Approved Project, how these changes will affect the environment, how the changes will be included in planning and how they will be managed for the life of the Project.

This factsheet sets out what economic and social impacts and benefits the community can expect from the Project. They are based on an economic assessment, an Accommodation and Employment Framework (AEF), and a Social Impact and Management Overview (SIMO) we have recently developed for the RTS Project.

What we heard during community consultation

We are committed to being a valued and active community member, and we can only do this by listening to community concerns and being open and transparent in managing community feedback. It is important to us that we demonstrate where feedback has influenced changes or improvements to the Project, as well as when changes aren't able to be made. During consultation for the Modification Application, we heard from several stakeholders with concerns about the impact of the Project, and support for the potential benefits the Project will bring. Common concerns raised during consultation relate to the cumulative impact of multiple generation and transmission projects in the region; ongoing disruptions to rural communities' way of life; concerns about the impact of in-coming workforces on existing housing and health services; uncertainty surrounding the scale of changes made to the Project in the Modification Application; and impacts on traffic and road deterioration.

We are addressing these concerns in our on-going Project planning and design and in our management strategies. You can read more about the changes to the Project in the fact sheets available.

If you would like to read more about the economic benefits of the Project, see the Amendment Report prepared for the RTS Project.



What are the economic and social benefits of the Project?

The RTS Project is expected to deliver significant social and economic benefits to the local and regional economy through:

- Increased regional economic activity through demand for local goods and services during construction.
- Increased economic resilience and diversification of income streams for host landholders.
- Employment during construction and operation, which includes a 'long peak' of 400 on-site construction jobs for just under two years (see our workforce modelling in Figure 1).
- Housing and accommodation opportunities.
- Significant community investment from benefit sharing contributions by way of proponent led initiatives, Voluntary Planning Agreements and Central-West Orana (CWO) Renewable Energy Zone (REZ) Access Fees

INCREASED REGIONAL ECONOMIC ACTIVITY DURING CONSTRUCTION

Construction will provide an economic boost for regional communities by increasing demand for local goods and services such as accommodation, hotels, restaurants, and cafes. The Project will also inject more than \$6 million each year to the local economy through payments to permanent staff, landholders and benefit sharing contributions.

These funds, combined with the construction and the operation of the wind farm, will go on to support a further \$95.47 million of regional economic activity during construction and \$33.8 million every year during operations, further supporting local economic prosperity and resilience.

This economic activity will create approximately 230 more regional jobs per year during construction and 190 more per year during operation.

Our Accommodation and Employment Framework (AEF) aims to maximise the amount of money spent in the local region. It proposes several measures to ensure that Australian entities have full, fair and reasonable opportunity to bid for the supply of key goods and services. The AEF is focused on linking local companies and organisations with larger contractors and manufacturers to build local industry capacity and support local opportunities across the entire supply chain.



EMPLOYMENT DURING CONSTRUCTION AND OPERATION

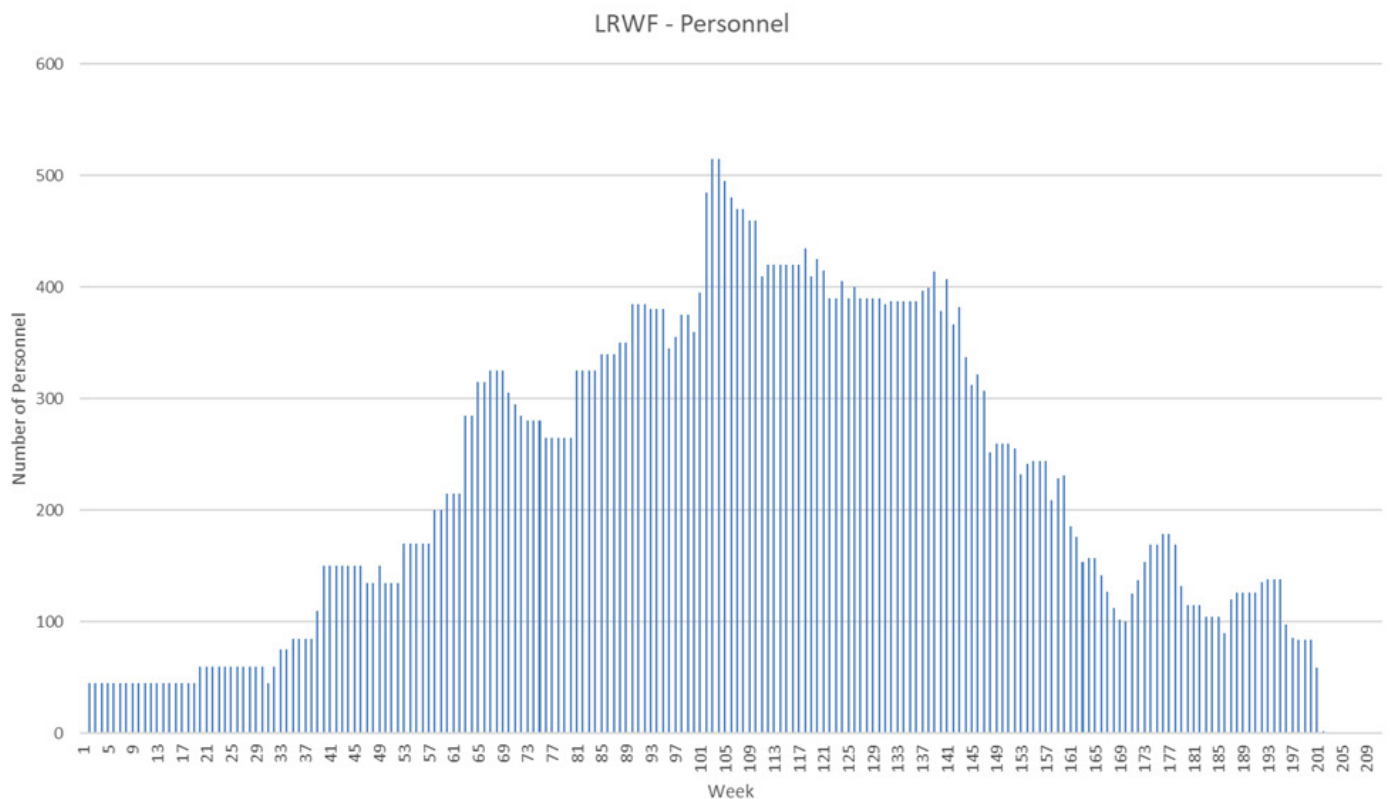
As Figure 1 shows, construction of the Project is anticipated to take just under four years. We anticipate a peak construction workforce of approximately 550 workers that would likely occur over several weeks and a 'long peak' of approximately 400 workers for just under 2 years.

These additional jobs would provide increased employment opportunities and economic benefits for the local community and broader region. Some of the types of jobs created by wind farms include:

- Domestic scale electricians
- Transport operators
- Competent machine operators
- General labourers
- Quarry workers
- Concrete workers

The AEF developed for this Project has identified strengths within the community including existing expertise in the mining and construction sectors, giving many employees a transferrable skillset for the Project. Despite this, we acknowledge that there is low unemployment across the Central-West Orana region with many projects and businesses experiencing challenges sourcing staff. We are committed to maximising local employment outcomes as part of the AEF. Some of the ways we will seek to do this is by facilitating pathways for local community members and First Nations job seekers to build the required skills and move into available jobs; supporting apprenticeships and training opportunities; encouraging contractors to employ local people first before looking beyond the region; and advertising employment and procurement opportunities widely at both local and regional levels.

Figure 1: Workforce numbers throughout construction



REGIONAL HOUSING AND ACCOMMODATION OPPORTUNITIES

Since the original project approval in 2018, the regional housing and short-term accommodation market has changed and several new renewable energy projects have been announced near the Liverpool Range Wind Farm. As part of our investigation into accommodation and employment opportunities in the region, we have identified substantial housing and accommodation constraints.

There are not enough hotels, motels, AirBnBs and rental homes within a 60-minute drive of the Project to house the expected project workforce without negatively impacting existing communities and short-term visitors to the region.

Based on this analysis, we are seeking to establish a temporary workers village close to the Project site that could accommodate the 'long peak' construction workforce, with a smaller proportion of the workforce (up to 100 people) to be housed in existing short-term accommodation on any given night during a brief peak construction phase.

This creates economic benefits for local accommodation businesses without crowding out tourism or placing upward pressure on rental costs. We are also currently in discussions with Warrumbungle Shire Council and Upper Hunter Shire Council to identify appropriate sites for a temporary workers village and will collaborate with local stakeholders to plan, design and deliver an accommodation outcome that maximises positive short and long term social and economic outcomes, and minimises negative impacts for local communities.

SIGNIFICANT COMMUNITY INVESTMENT

Tilt Renewables has several existing arrangements in place designed to directly fund infrastructure and initiatives in the region. This includes a Voluntary Planning Agreement of \$3,000 per installed turbine per year with Warrumbungle Shire and Upper Hunter Shire Councils, approximately \$3.6 million per year in CWO REZ access fees, and other proponent-led benefit sharing initiatives.

Next steps:

We are aiming to lodge the Response to Submissions (RTS) report, Amendment Report, and all updated environmental impact assessments with DPE in June 2023. These reports will detail the consultation completed to-date, how submissions received during public exhibition have been addressed, and will clearly show the changes to the design and layout of the Project. DPE will review the documentation and make a determination on the Modification Application.

We are also seeking Commonwealth approval under a separate approvals process under the *Environment Protection and Biodiversity Conservation Act 1999*. The project will be assessed by way of Public Environment Report (PER) which will be subject to a public exhibition process managed by the Commonwealth Department of Climate Change, Energy, the Environment and Water (DCCEEW). Further details on the timing of this will be provided via our website and newsletters.

STAY UP TO DATE

To view the Project online and to subscribe to the newsletter, visit:
www.liverpoolrangewindfarm.com.au



To stay up to date on progress of the Project visit:

Modification Application:

www.planningportal.nsw.gov.au/major-projects/projects/mod-1-turbine-and-infrastructure-changes

EPBC Approval:

epbcpportal.awe.gov.au/all-referrals/project-referral-summary/?id=dc3fd301-9a6b-ed11-81ac-00224818aa21

For more information, please visit the website below

or call us anytime to ask questions using: **1800 WE TILT (938 458)**

Email: liverpoolrangewindfarm@tiltrenewables.com | Web: www.liverpoolrangewindfarm.com.au

Postal Address: PO Box 16080 Collins St West, Melbourne Vic 8007