



Rye Park Wind Farm

Fact Sheet

May
2018

Tilt Renewables is investigating the possibility of developing the Rye Park Wind Farm, near Rye Park in New South Wales.

Located within three local government areas - Yass Valley, Boorowa and Upper Lachlan - the project has planning approval for up to 92 turbines. The site incorporates a long ridgeline which runs in a north-south direction and provides an excellent wind resource.

Who is Tilt Renewables?

Tilt Renewables (originally part of Trustpower) is an owner, operator and developer of wind and solar farms across Australia and New Zealand.

We have an existing asset base of 307 operating turbines across seven wind farms, with a total installed capacity of 582MW (about 11 per cent market share of installed wind capacity in Australasia). This includes Snowtown Wind Farm, South Australia's largest and Australia's second largest wind farm, and Tararua Wind Farm, New Zealand's largest wind farm.

Project Description

The proposed Rye Park Wind Farm was initially developed by Epuron beginning in 2008, when the first monitoring mast was installed.

Trustpower acquired the project from Epuron in 2014 with Epuron continuing some involvement in securing the planning approvals. The Rye Park Wind Farm is located to the north of Yass and east of Boorowa, New South Wales, on the edge of the Southern Tablelands and the South West Slopes in the vicinity of the township of Rye Park. It is located within three local government areas - Yass Valley, Boorowa and Upper Lachlan.

The site has a long ridgeline running north-south which is at right angles to the prevailing wind direction, making it an excellent wind resource.

An application for 109 turbines was lodged with the NSW Department of Planning and Environment (DPE) and approval for up to 92 turbines was granted by the Planning Assessment Commission in May 2017. Each turbine will have a tip height of up to 157 metres and will be connected by underground and overhead electrical cables. The project will have an installed capacity of about 276MW and received EPBC approval in December 2017.

Project Facts

- Up to 92 turbines and hardstands
- Approximate installed capacity up to 276MW
- Six permanent wind monitoring masts
- One 330kV connection substation with associated overhead power lines and on-site substations
- Overhead and underground 33kV reticulation
- Up to three collection substations
- Access roads
- Up to two operations and maintenance facilities
- Temporary construction facilities



Local and Regional Benefits

Employment

- Support more than 470 sustained jobs in New South Wales and 144 in the ACT over the three-year construction period.
- Up to 62 direct jobs for local residents during construction.
- 12 direct jobs regionally once operational.

All our projects have resulted in significant local employment and we will continue to recommend maximising local employment in our construction contracts.

The majority of local employment is during construction, but the operations phase also provides opportunities for local employment/businesses.

Typical goods and services likely to be sourced during construction and operations locally include accommodation, engineering, freight services, construction materials and equipment, local labour, technical contractors, earth works services, fencing and landscaping.

Tilt Renewables has established a goods and services register at the project's website and encourages individuals and organisations alike to register their interest online.

Economic Development to Rural Communities

- \$600 million project.
- Potential to generate \$163 million of value add (contribution to Gross State Product) in NSW, \$45 million of value add in ACT and \$49 million regionally over the construction period.
- Support annually \$3.6 million of value add in the region once operational.
- Direct injection of about \$2 million per annum to the local community through payments to landholders, permanent staff and community fund contributions.
- Provide a drought-proofing and post-retirement income stream for farmers.

Environmental Benefits

- Smaller environmental footprint than comparative forms of generation.
- Minimal impact on land productivity.
- Additional fire breaks and improved access roads for firefighting.
- Will generate enough clean renewable energy to power 140,000 homes.
- Will save 650,000 tonnes of carbon emissions each year of operation, the equivalent of removing 140,000 cars off the roads per annum.
- Offsetting of environmental impacts where they can't be avoided with net environmental benefits.
- Reduction of carbon footprint with a carbon payback of nine months.

Tilt Renewables is also committed to providing financial support for local community services through a community enhancement fund.

Community Enhancement Fund

The principles of the Community Benefit Fund have now been agreed with the local councils. It is proposed that separate funds be established in each council area, based on \$2,500 per annum per turbine built. The funds will be administered through Section 355 Committees.

The proposed scheme will be agreed and captured under a Voluntary Planning Agreement (VPA) which will be subject to further community consultation. Tilt Renewables has also agreed to allocate at least 20 per cent of the total scheme for educational needs, while the remainder will be available for community enhancement and benefit projects within the immediate vicinity of the wind farm.

If you would like further information on the scheme please make contact via the email or 1800 number below.

Community Engagement

Tilt Renewables (previously Trustpower) has undertaken a comprehensive community consultation process for the proposed Rye Park Wind Farm prior to and as part of the planning application process.

The purpose of the engagement has been to provide accurate information on the project and wind farms in general to the community, as well as giving the community the opportunity to influence the project design.

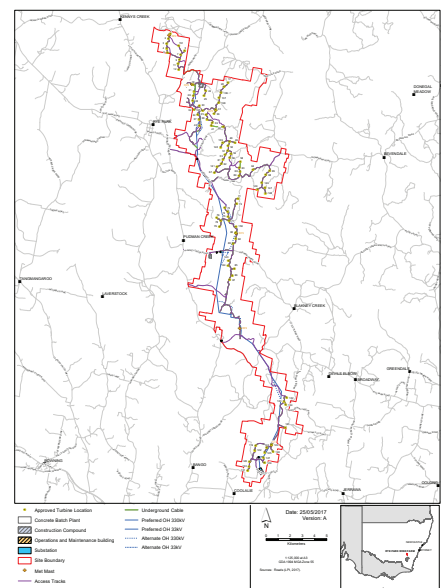
The consultation process included a number of community information days, establishing an information centre in Yass, regular newsletters and numerous one on one meetings. A number of modifications have been made to the project layout as a result of the further consultation, including a reduction of the number of turbines from 126 to 109 in the final Response to Submissions, which was put on exhibition for further public comment.

Tilt Renewables is appreciative of the valuable input it has received from the community throughout the planning process. About 50 per cent of the submissions to the Response to Submission were in support of the project, as well as more than 50 per cent of the public presentations during the Planning Assessment Commission's public meeting.

The final planning approval was granted in May 2017 for up to 92 turbines and EPBC approval granted in December 2017.

Rye Park Wind Farm

PAC Approved Layout Overview



For more information please visit the project website

Web: www.ryeparkwf.com.au

Email: ryeparkwindfarm@tiltrenewables.com | Phone: 1800 839 661

Postal Address: PO Box 16080 Collins St West, Melbourne Vic 8007

