

# Rye Park Wind Farm Construction Update



**Week commencing 12 December 2022**

*Construction Updates are released fortnightly and include a summary of construction works undertaken and a look-ahead of upcoming works.*

Page 1 of 2

The 396 MW Rye Park Wind Farm project is bringing investment and jobs to the region. The recent wet weather has significantly impacted the local road network resulting in damage to both sealed and unsealed roads. We are working with council and our contractors to progress repairs as soon as is practicable. We would like to thank the Rye Park community for your patience as we continue to review our construction methods for ways to further reduce the disruption.

## Oversize-Overmass (OSOM) wind turbine deliveries

Turbine component deliveries continue Monday through Saturday and are subject to a police escort. Where possible we will schedule OSOM deliveries prior to school zone exclusion times. The last scheduled delivery for 2022 will be on the 22 December.

Please allow extra time for your journey if travelling on the OSOM route in the morning.

Some tips when approaching an OSOM delivery:

- Reduce your speed
- Prepare to stop if necessary
- Be patient. Do not overtake, you will be given an opportunity to pass when it is safe
- Be prepared for unexpected wind buffeting when given the opportunity to pass
- Follow instructions given by the traffic escort

## End of year shutdown

Construction activities are scheduled to shut down for ten days over Christmas and New Years. No construction activities or deliveries are planned from the 23 December 2022 to the 2 January 2023.

On behalf of Tilt Renewables and the Rye Park Wind Farm team we would like to thank you for all of your support and understanding in 2022 and to wish you all a happy and safe holidays.

For any questions or feedback, please get in touch by calling: **1800 WE TILT** (938 458)

Email: [ryeparkwindfarm@tiltrenewables.com](mailto:ryeparkwindfarm@tiltrenewables.com) | Web: [www.ryeparkwf.com.au](http://www.ryeparkwf.com.au)

Postal Address: PO Box 16080 Collins St West, Melbourne Vic 8007



**Sign up for updates by subscribing to the newsletter and construction updates via SMS**

Use the QR code provided to sign up or contact us on 1800 WE TILT and we'll do it for you.

You can text us too. Text +61 480 096 779 if you have any questions and we'll give you a call back.



# Rye Park Wind Farm Construction Update



**Week commencing 12 December 2022**

Page 2 of 2

*Construction Updates are released fortnightly and include a summary of construction works undertaken and a look-ahead of upcoming works.*

## Road works and maintenance

Repair works and upgrades continue. This includes regular maintenance grades on unsealed roads used by project vehicles

Please expect delays and diversions on the following roads:

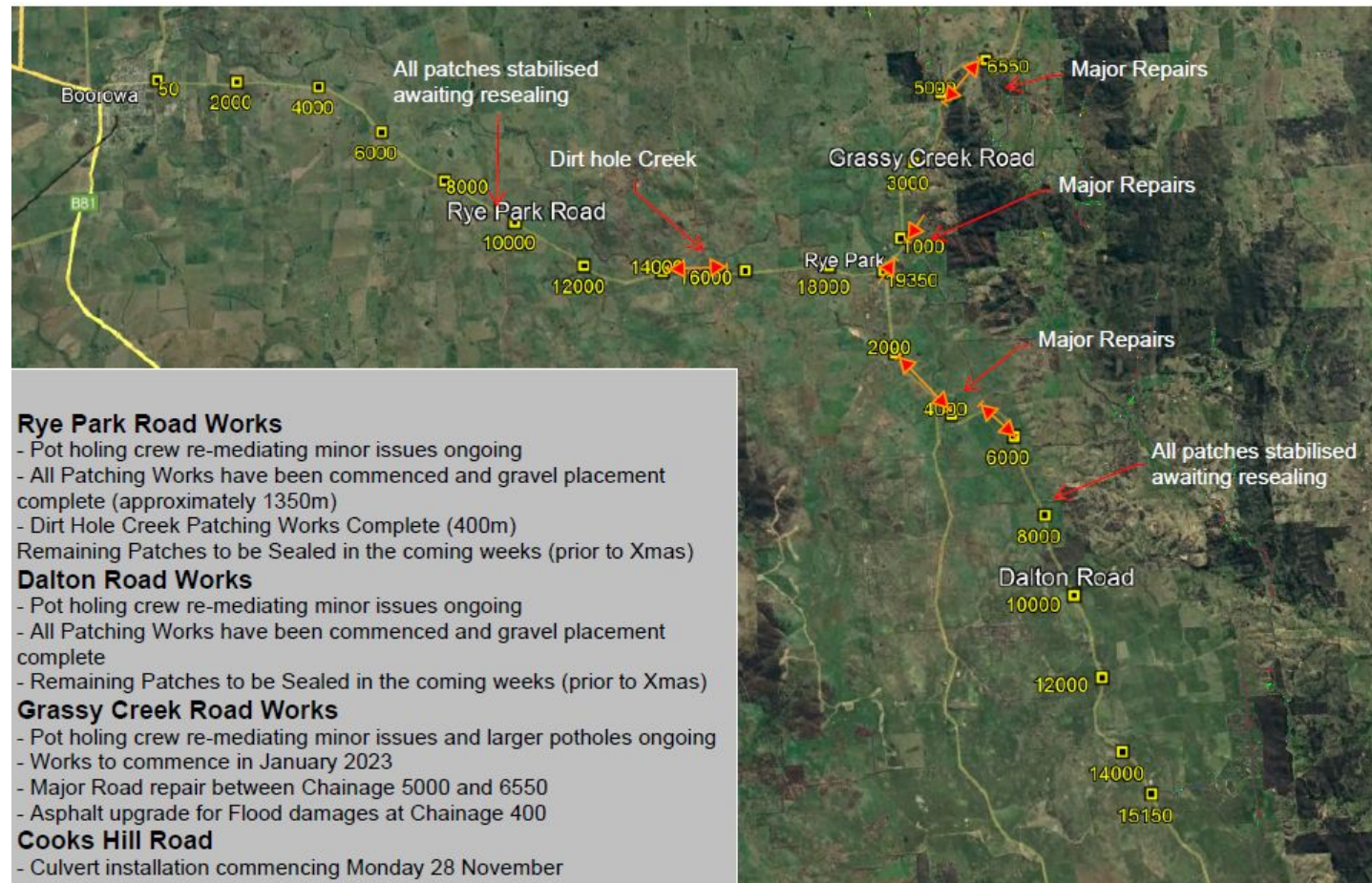
- Cooks Hill Road
- Dalton Road
- Grassy Creek Road
- Rye Park Road

Please follow traffic controls and road work speed limits (see map overleaf for locations)

**If you have any questions or concerns, please contact:**

Tilt Renewables - Site HSEC Manager,  
Andrew Galland - 0447 076 886

Zenviron - Site Manager: Sasa Stegic -  
0499 011 861



For any questions or feedback, please get in touch by calling: 1800 WE TILT (938 458)

Email: [ryeparkwindfarm@tiltrenewables.com](mailto:ryeparkwindfarm@tiltrenewables.com) | Web: [www.ryeparkwf.com.au](http://www.ryeparkwf.com.au)

Postal Address: PO Box 16080 Collins St West, Melbourne Vic 8007



**Sign up for updates by subscribing to the newsletter and construction updates via SMS**

Use the QR code provided to sign up or contact us on 1800 WE TILT and we'll do it for you.

You can text us too. Text +61 480 096 779 if you have any questions and we'll give you a call back.