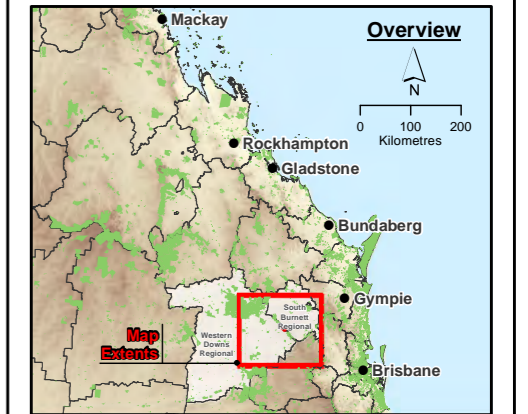


- Legend**
- Study Area
 - Locality
 - Highway; Freeway
 - Main Road
- Protected Areas (Estate Tenure)**
- Forest Reserve
 - National Park
 - Regional Park
 - State Forest
- IBRA Regions**
- Brigalow Belt South
 - South Eastern Queensland



Ziaor Sources:

1. Project Site, Turbine Layout © 2016, AECOM Australia Pty Ltd.
2. Surat Basin 40 cm Imagery © SISP, 2013
3. Service Road, Transmission Lines © AGL, 2014
4. Locality, Roads © StreetPro, 2011
5. Cadastral Data (DCDB) © State of Queensland (Department of Natural Resources and Mines) 2016
6. Contours 10m © Department of Natural Resources and Mines, 2013
7. Hillshade, based on the 25m DEM covering the SEQ, DNRM 2009
8. Local Government Area (LGA) boundaries © Australia Bureau of Statistics (ABS), 2011
9. Vegetation Management Watercourse and Drainage Feature map (1:100 000 and 1:250 000) - version 1.4 dataset © State of Queensland (Department of Natural Resources and Mines) 2016
10. Background Image, Captured on 27/04/2011, Bing Maps
11. Drainage Basins © State of Queensland (Department of Natural Resources and Mines) 2016
12. Protected Areas © State of Queensland (Department of National Parks, Sport and Racing) 2016-02-11

Ziaor:

StreetPro © 2011 Pitney Bowes Software Pty Ltd. All rights reserved.
 © State of Queensland (Department of Natural Resources and Mines) 2014-2016. Data from Commonwealth of Australia (Geoscience Australia) 2009 used in creating this dataset provided under Creative Commons Australia - Attribution license. Updated data available at <http://data.information.qld.gov.au/>
 © The State of Queensland (Department of Environment and Resource Management) 2011. While every care is taken to ensure the accuracy of the Information Product, the Department of Environment and Resource Management makes no representations or warranties about its accuracy, reliability, completeness or suitability for any particular purpose and disclaims all responsibility and all liability (including without limitation, liability in negligence) for all expenses, losses, damages (including indirect or consequential damage) and costs which you might incur as a result of the product being inaccurate or incomplete in any way and for any reason.

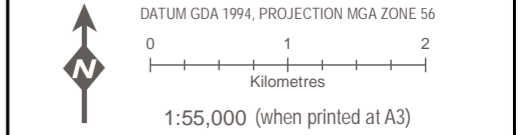
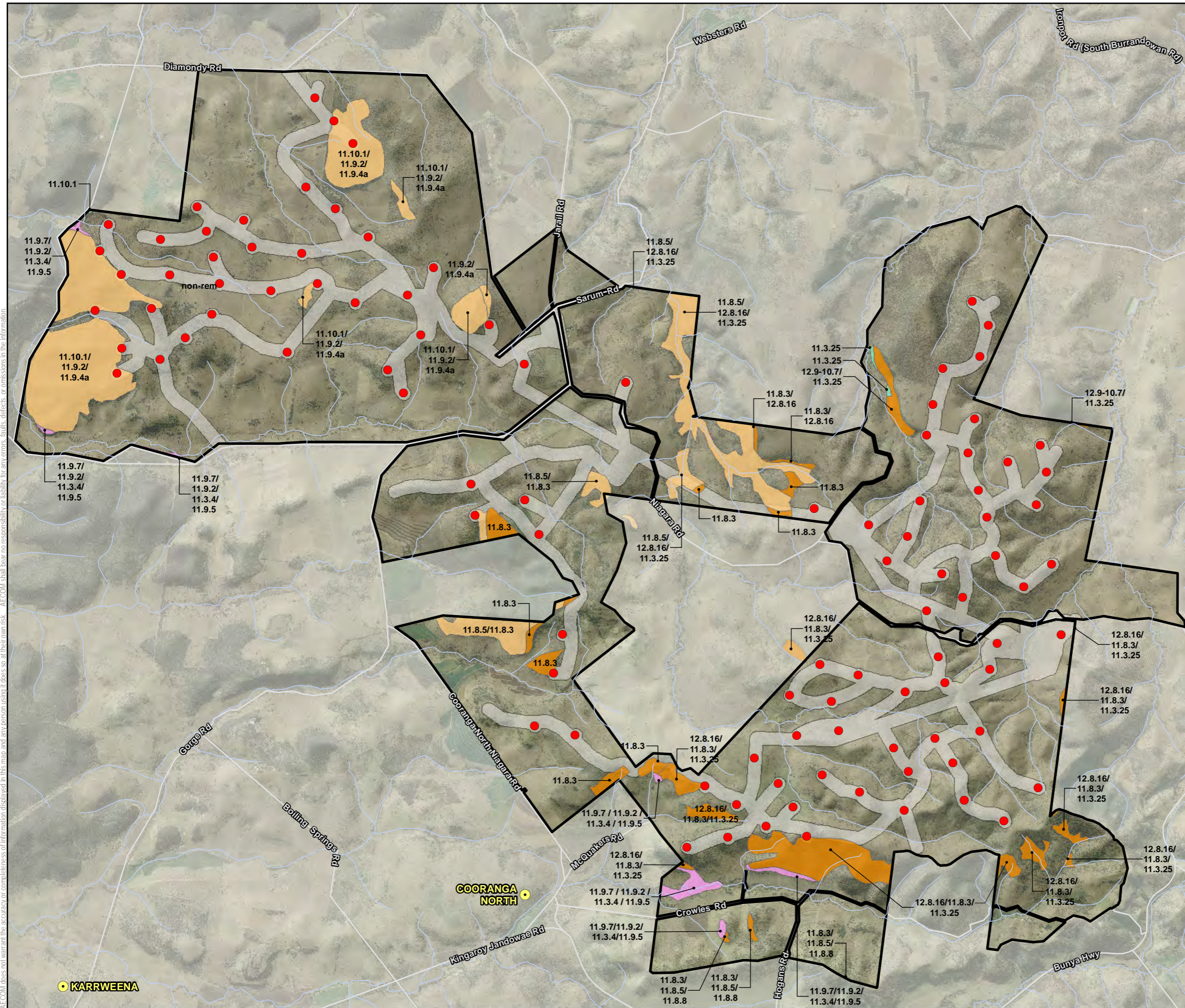
**COOPERS GAP WIND FARM
ENVIRONMENTAL IMPACT STATEMENT**

PROTECTED AREAS AND BIOREGIONS

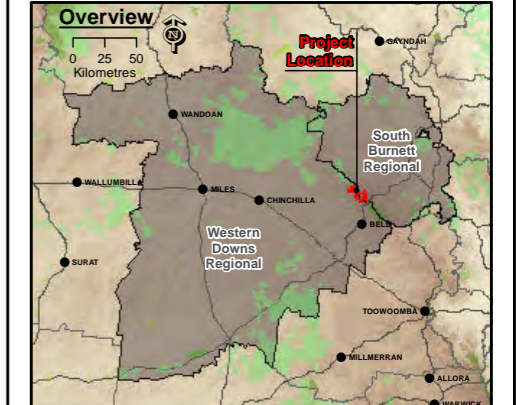
PROJECT #:	60489152
CREATED BY:	BM
LAST MODIFIED:	BM: 5/09/2016
VERSION:	1

Figure
12.1

AECOM does not warrant the accuracy or completeness of information displayed in this map and any person using it does so at their own risk. AECOM shall bear no responsibility or liability for any errors, faults, defects, or omissions in the information.



- Legend**
- Project Site
 - Study Area
 - Locality
 - Turbines
 - Watercourse
 - Road
- Regional Ecosystems (v8)**
- Endangered - Sub-dominant
 - Of Concern - Dominant
 - Of Concern - Sub-dominant
 - Not Of Concern



Data Sources:

1. Project Site, Turbine Layout © 2016 AECOM Australia Pty Ltd.
2. Surat Basin 40 cm Imagery © SISP, 2013
3. Service Road, Transmission Lines © AGL, 2014
4. Locality, Roads © StreetPro 2011
5. Cadastral Data (DCDB) © State of Queensland (Department of Natural Resources and Mines) 2016
6. Contours 10m © Department of Natural Resources and Mines, 2013.
7. Hillshade, based on the 25m DEM covering the SEC2, DNRM 2005
8. Local Government Area (LGA) boundaries © Australia Bureau of Statistics (ABS), 2011.
9. Vegetation Management Watercourse and Drainage feature map (1:100 000 and 1:250 000) - version 1.4 dataset © State of Queensland (Department of Natural Resources and Mines) 2016
10. Background Image, Captured on 27/04/2011, Bing Maps
11. Drainage Basins © State of Queensland (Department of Natural Resources and Mines) 2016
12. Protected Areas © State of Queensland (Department of National Parks, Sport and Racing) 2016-02-11
13. Regional Ecosystem mapping version 8.0 © The State of Queensland (Department of Natural Resources and Mines) 2015

Disclaimer:

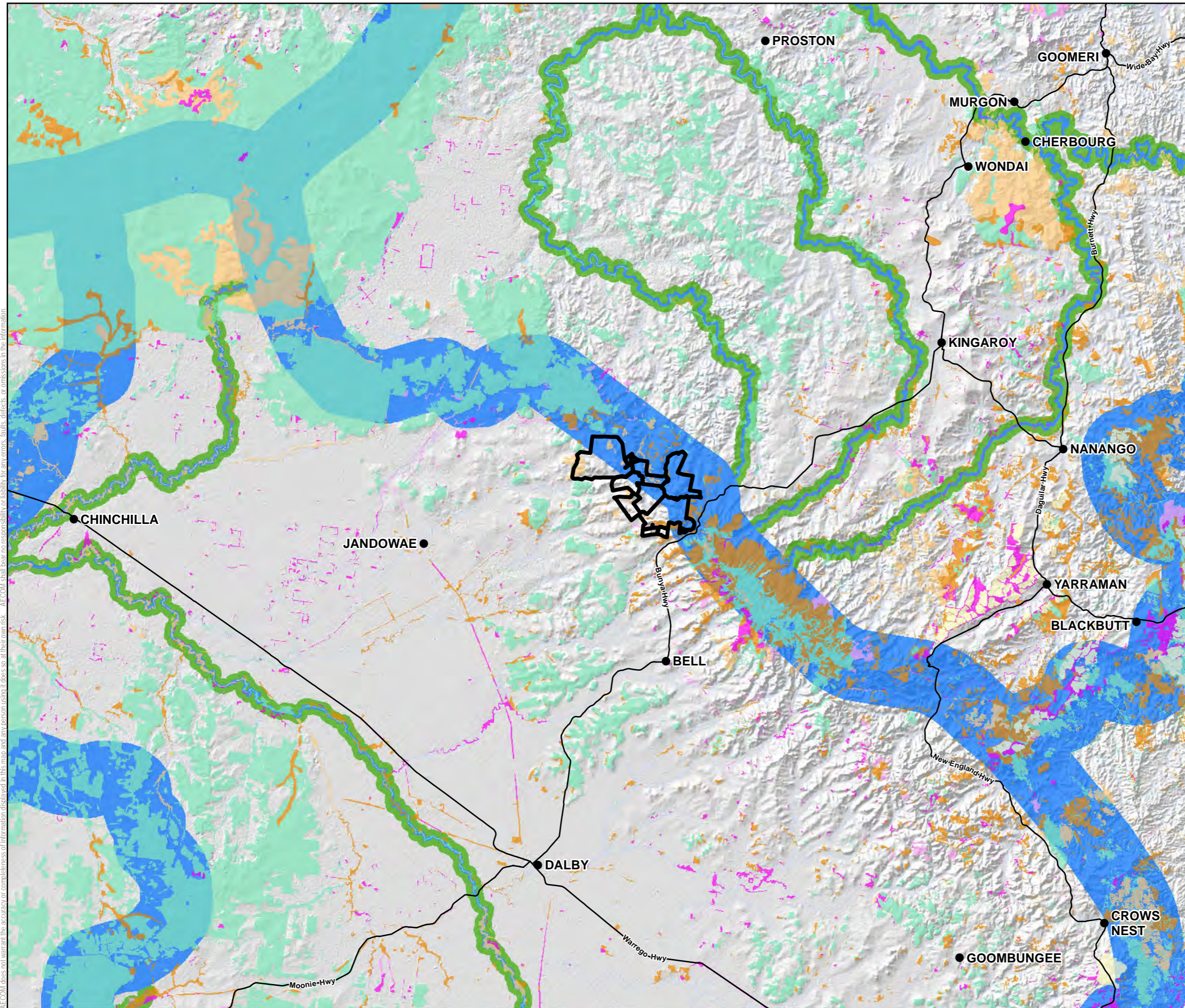
StreetPro © 2011 Pitney Bowes Software Pty Ltd. All rights reserved.
 © State of Queensland (Department of Natural Resources and Mines) 2014-2016. Data from Commonwealth of Australia (Geoscience Australia) 2009 used in creating this dataset provided under Creative Commons Australia Attribution license. Updated data available at <http://rds.information.qld.gov.au/rds/>
 © The State of Queensland (Department of Environment and Resource Management) 2011. While every care is taken to ensure the accuracy of the information Product, the Department of Environment and Resource Management makes no representations or warranties about its accuracy, reliability, completeness or suitability for any particular purpose and disclaims all responsibility and all liability (including without limitation, liability in negligence) for all expenses.



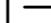








COOPERS GAP WIND FARM
 ENVIRONMENTAL IMPACT STATEMENT

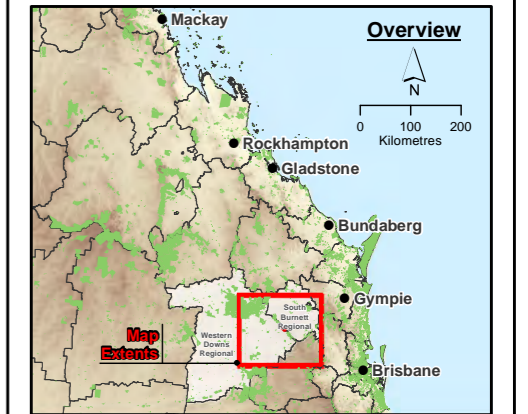
REGIONAL ECOSYSTEMS WITHIN STUDY AREA

PROJECT #:	60489152	Figure 12.2
CREATED BY:	BM	
LAST MODIFIED:	BM: 5/09/2016	
VERSION:	1	

AECOM does not warrant the accuracy or completeness of information displayed in this map and any person using it does so at their own risk. AECOM shall bear no responsibility or liability for any errors, faults, defects, or omissions in the information.



- Legend**
-  Study Area
 -  Locality
 -  Highway; Freeway
- Statewide Corridors v1.2**
-  State
 -  Regional
- Regional Ecosystem (v8)**
-  Endangered - Dominant
 -  Endangered - Sub-dominant
 -  Of Concern - Dominant
 -  Of Concern - Sub-dominant
 -  Not Of Concern
 -  Plantation forest



Data Sources:

1. Project Site: Turbine Layout © 2016 AECOM Australia Pty Ltd.
2. Locality, Roads © StreetPro 2011
3. Cadastral Data (DCDR) © State of Queensland (Department of Natural Resources and Mines) 2016
4. Hillshade, based on the 25m DEM covering the SEQR DNRM 2005
5. Local Government Area (LGA) boundaries © Australia Bureau of Statistics (ABS), 2011.
6. Vegetation Management Watercourse and Drainage feature map (1:100 000 and 1:250 000) - version 1.4 dataset © State of Queensland (Department of Natural Resources and Mines) 2016
7. Background image, Captured on 27/04/2011, Bing Maps.
8. Drainage Basins © State of Queensland (Department of Natural Resources and Mines) 2016
9. Protected Areas © State of Queensland (Department of Natural Resources, Sport and Racing) 2016-02-11
10. Regional Ecosystem mapping version 8.0 © The State of Queensland (Department of Natural Resources and Mines) 2015
11. Queensland Statewide Corridor Buffers, Version 1.2 © State of Queensland (Department of Environment and Heritage Protection), 2015

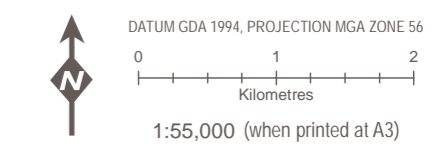
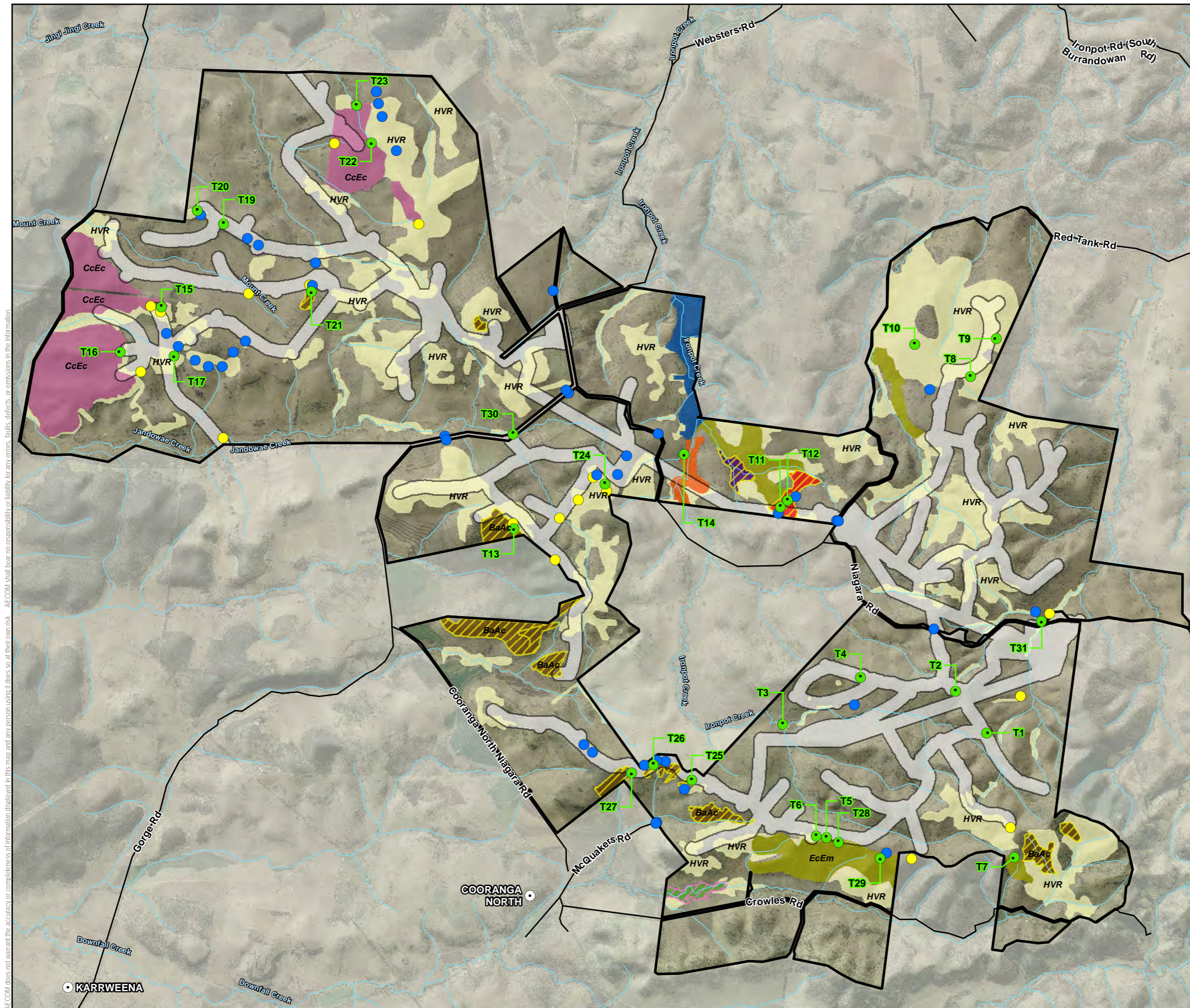
Disclaimer:
 StreetPro © 2011 Pitney Bowes Software Pty Ltd. All rights reserved.
 © State of Queensland (Department of Natural Resources and Mines) 2014. Data from Commonwealth of Australia (Geoscience Australia) 2009 used in creating this dataset provided under Creative Commons Australia - Attribution licence. Updated data available at <http://data.qld.gov.au/>
 © The State of Queensland (Department of Environment and Resource Management) 2011. While every care is taken to ensure the accuracy of the information Product, the Department of Environment and Resource Management makes no representations or warranties about its accuracy, reliability, completeness or suitability for any particular purpose and disclaims all responsibility and all liability (including without limitation, liability in negligence) for all expenses, losses, damages (including indirect or consequential damage) and costs which you might incur as a result of the product being inaccurate or incomplete in any way and for any reason.

**COOPERS GAP WIND FARM
 ENVIRONMENTAL IMPACT STATEMENT**

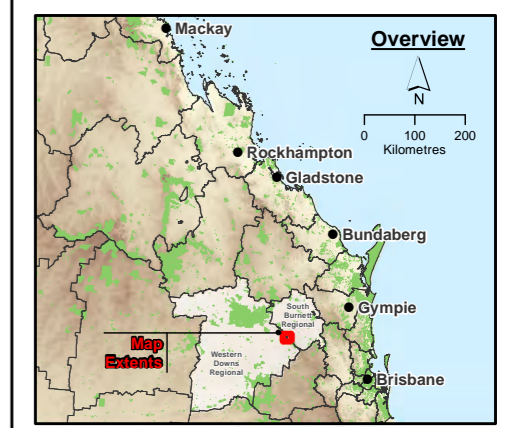
BIODIVERSITY PLANNING ASSESSMENT CORRIDOR

PROJECT #:	60489152	Figure 12.3
CREATED BY:	BM	
LAST MODIFIED:	BM: 5/09/2016	
VERSION:	1	

AECOM does not warrant the accuracy or completeness of information displayed in this map and any person using it does so at their own risk. AECOM shall bear no responsibility or liability for any errors, faults, defects, or omissions in this information.



- Legend**
- Project Site
 - Study Area
 - Locality
 - Observation Sites (2010)
 - Tertiary Sites (2013)
 - Quaternary Sites (2013)
 - Road
- Plant Communities**
- AhCc (11.9.5)
 - BaAc (11.8.3)
 - CcEc (11.10.1)
 - EcEm (12.8.16)
 - EcEm/BaAc/EtAf (12.8.16 / 11.8.3 / 11.3.25)
 - EcEm/EtAf (12.8.16 / 11.3.25)
 - EcEm/FcSa (12.8.16 / 11.9.4)
 - FcSa (11.9.4)
 - HVR
- Threatened Ecological Communities**
- Brigalow Acacia harpophylla dominant and co-dominant
 - Semi-evergreen vine thickets of the Brigalow Belt (North and South) and Nandewar Bioregions



Notes:

1. Project Site, Turbine Layout © 2016 AECOM Australia Pty Ltd.
2. Surat Basin 40 cm Imagery © SISP 2013
3. Service Road, Transmission Lines © AGI 2014
4. Locality, Roads © StreetPro 2011
5. Cadastral Data (DCDB) © State of Queensland (Department of Natural Resources and Mines) 2016
6. Hillshade, based on the 25m DEM covering the SEQ, DNRM 2005
7. Vegetation Management Watercourse and Drainage Feature map (1:100 000 and 1:250 000) - version 1.4 dataset © State of Queensland (Department of Natural Resources and Mines) 2016
8. Background Image, Captured on 27/04/2011, Bing Maps
9. Protected Areas © State of Queensland (Department of National Parks, Sport and Racing) 2016-02-11
10. Regional Ecosystem mapping version 8.0 © The State of Queensland (Department of Natural Resources and Mines) 2015
11. Threatened Ecological Communities © AECOM, 2013
12. Flora Observation Sites © AECOM, 2010
13. Quaternary and Tertiary Sites © AECOM, 2013
14. Plant Communities © AECOM, 2013

Disclaimer:

StreetPro © 2011 Pitney Bowes Software Pty Ltd. All rights reserved.

© State of Queensland (Department of Natural Resources and Mines) 2014-2016. Data from Commonwealth of Australia (Geoscience Australia) 2009 used in creating this dataset provided under Creative Commons Australia Attribution license. Updated data available at <http://data.gis.gov.au/>

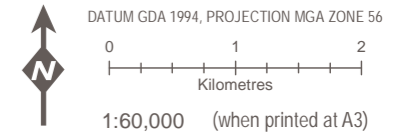
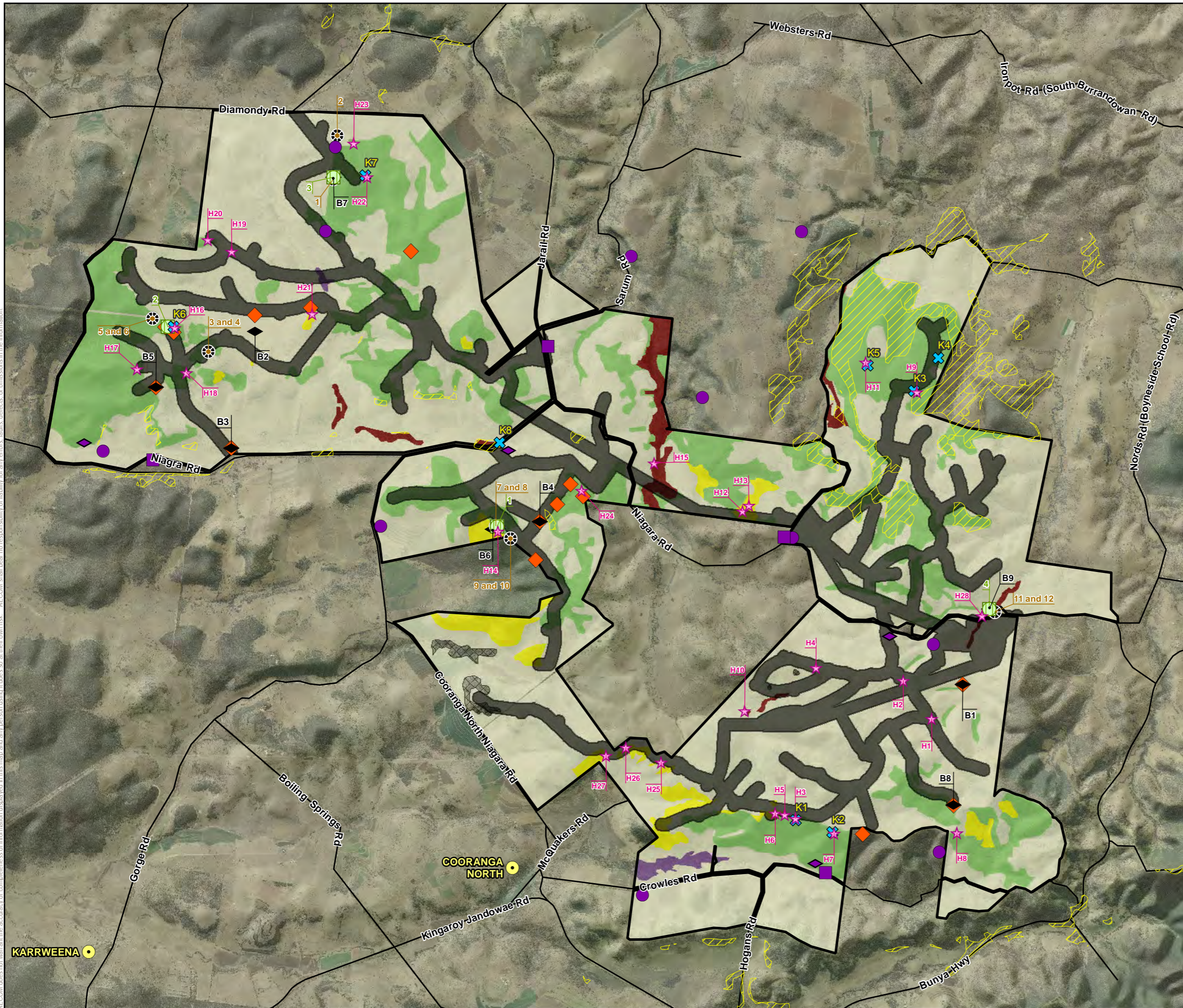
© The State of Queensland (Department of Environment and Resource Management) 2011. While every care is taken to ensure the accuracy of the Information Product, the Department of Environment and Resource Management makes no representations or warranties about its accuracy, reliability, completeness or suitability for any particular purpose and disclaims all responsibility and all liability (including without limitation, liability in negligence) for all expenses, losses, damages (including indirect or consequential damage) and costs which you might incur as a result of the product being inaccurate or incomplete in any way and for any reason.

**COOPERS GAP WIND FARM
ENVIRONMENTAL IMPACT STATEMENT**

**PLANT COMMUNITY MAPPING AND
THREATENED ECOLOGICAL COMMUNITIES**

PROJECT #:	60489152	Figure 12.4
CREATED BY:	BM	
LAST MODIFIED:	BM: 5/09/2016	
VERSION:	1	

AECOM does not warrant the accuracy or completeness of information displayed in this map and any person using it does so at their own risk. AECOM shall bear no responsibility or liability for any errors, faults, defects, or omissions in the information.



Legend

- Project Site
 - Study Area
 - Locality
 - Road
 - Habitat Assessment (2013)
 - Detailed Trap Sites (2012)
 - Remote Camera / Hair Tube Sites (2012)
 - Koala SAT sites (2013)
 - Bird utilisation survey (2010)
 - Bat detection (2010)
 - Bat detection (2008)
 - Bird utilisation survey (2008)
 - Call playback for nocturnal birds and amphibians (2008)
 - Essential Regrowth Habitat (Koala)
- Broad Habitat Types**
- Eucalypt Woodland or Open Forest
 - Fringing Riparian Woodlands
 - Non-eucalypt Open Forest
 - Vine Thickets
 - Non-remnant (Open Grassland Pasture)
 - Unknown / Unverified Habitat



Map Sources:

1. Project Site, Turbine Layout © 2016 AECOM Australia Pty Ltd.
2. Sural Basin 40 cm Imagery © SSP 2013
3. Service Road, Transmission Lines © AGL 2014
4. Locality Roads © StreetPro 2011
5. Cadastral Data (DCDB) © State of Queensland (Department of Natural Resources and Mines) 2016
6. Contours 10m © Department of Natural Resources and Mines, 2011
7. HRHade, based on the 25m DEM covering the SEQ, DNRM 2005
8. Local Government Area (LGA) boundaries © Australia Bureau of Statistics (ABS), 2011
9. Vegetation Management Watercourse and Drainage Feature map (1:100 000 and 1:250 000) - version 1.4 dataset © State of Queensland (Department of Natural Resources and Mines) 2016
10. Background Image, Captured on 27/04/2011, Bing Maps
11. Drainage Basins © State of Queensland (Department of Natural Resources and Mines) 2016
12. Protected Areas © State of Queensland (Department of National Parks, Sport and Racing) 2016-02-11
13. Regional Ecosystem mapping version 8.0 © The State of Queensland (Department of Natural Resources and Mines) 2015
14. Essential Regrowth Habitat Koala © DNRM, 2013
15. Queensland Statewide Corridor Buffers, Version 1.2 © State of Queensland (Department of Environment and Heritage Protection), 2015

Disclaimer:

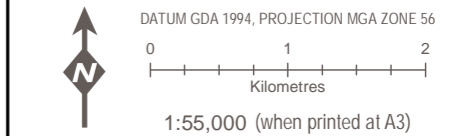
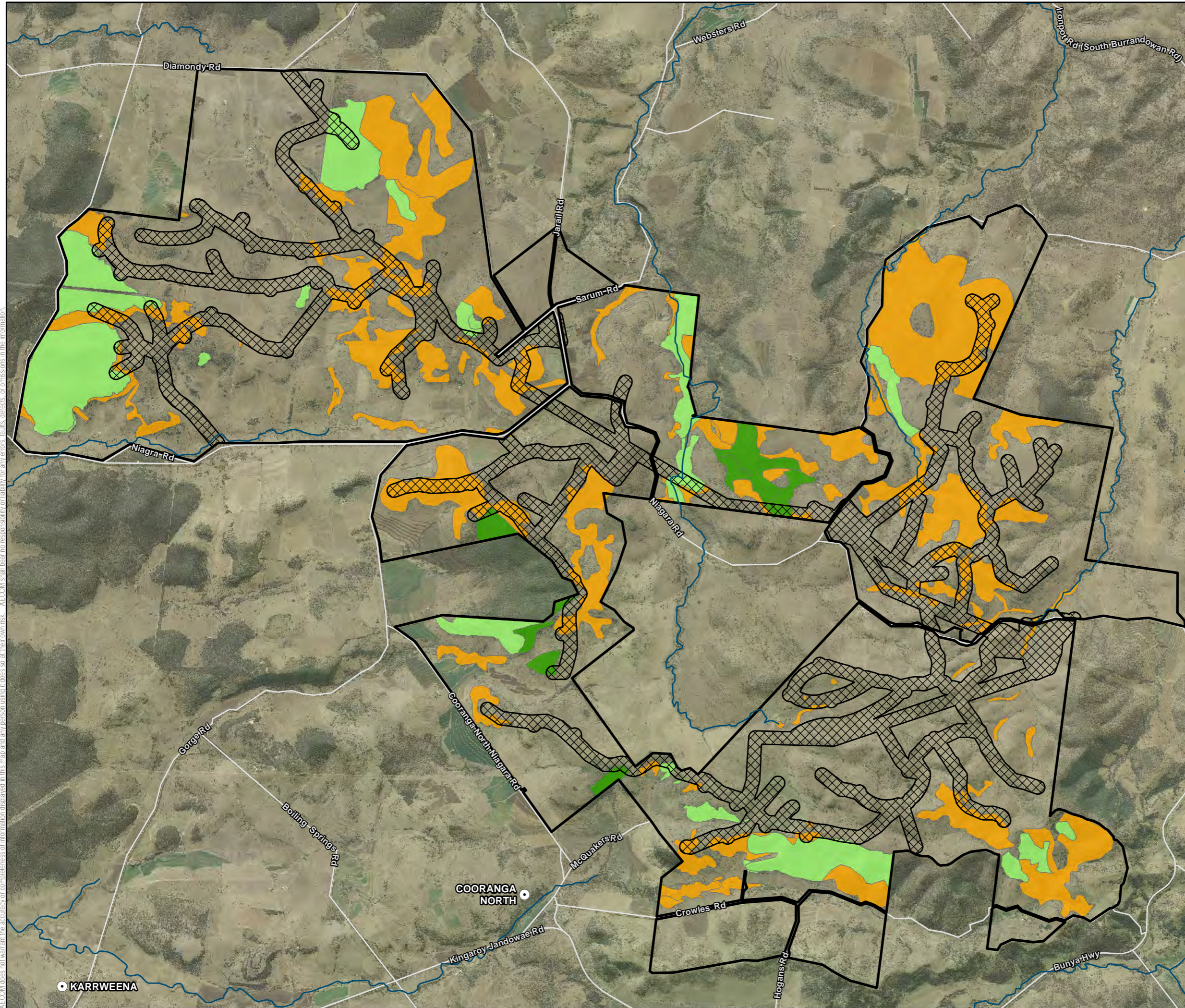
StreetPro © 2011 Pitney Bowes Software Pty Ltd. All rights reserved.
© State of Queensland (Department of Natural Resources and Mines) 2014-2016. Data from Commonwealth of Australia (Geoscience Australia) 2009 used in creating this dataset provided under Creative Commons Australia - Attribution license. Updated data available at <http://data.information.qld.gov.au/>
© The State of Queensland (Department of Environment and Resource Management) 2011. While every care is taken to ensure the accuracy of the Information Product, the Department of Environment and Resource Management makes no representations or warranties about its accuracy, reliability, completeness or suitability for any particular purpose and disclaims all responsibility and all liability (including without limitation, liability in negligence) for all expenses, losses, damages (including indirect or consequential damage) and costs which you might incur as a result of the

**COOPERS GAP WIND FARM
ENVIRONMENTAL IMPACT STATEMENT**

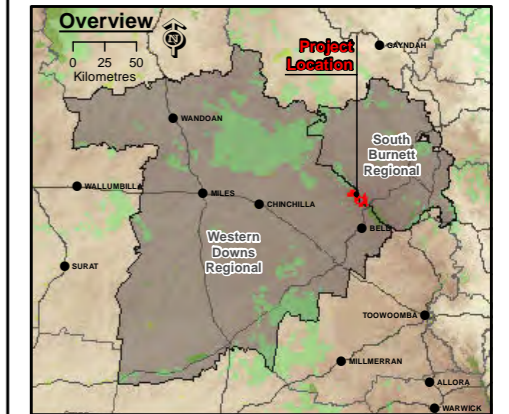
**FAUNA HABITAT, SURVEY LOCATIONS
AND BROAD HABITAT TYPES**

PROJECT #:	60489152	Figure 12.5
CREATED BY:	BM	
LAST MODIFIED:	BM: 5/09/2016	
VERSION:	1	

AECOM does not warrant the accuracy or completeness of information displayed in this map and any person using it does so at their own risk. AECOM shall bear no responsibility or liability for any errors, faults, defects, or omissions in the information.



- Legend**
- Project Site
 - Study Area
 - Locality
 - Road
 - Vegetation Management Watercourse**
 - Stream order 3 to 8
 - Vegetation Condition**
 - Very Good to Excellent
 - Fair to Good
 - Poor
 - Very Poor to Poor



Data Sources:

1. Project Site, Turbine Layout © 2016 AECOM Australia Pty Ltd.
2. Surat Basin 40 cm Imagery © SISIP, 2013
3. Service Road, Transmission Lines © AGL, 2014
4. Locality, Roads © StreetPro 2011
5. Cadastral Data (DCDB) © State of Queensland (Department of Natural Resources and Mines) 2016
6. Contours 10m © Department of Natural Resources and Mines, 2013.
7. Hillshade, based on the 25m DEM covering the SE QLD, DNRM 2005
8. Local Government Area (LGA) boundaries © Australia Bureau of Statistic (ABS), 2011.
9. Vegetation Management Watercourse and Drainage Feature map (1:100 000 and 1:250 000) - version 1.4 dataset © State of Queensland (Department of Natural Resources and Mines) 2016
10. Background Image, Captured on 27/04/2011, Bing Maps.
11. Protected Areas © State of Queensland (Department of National Parks, Sport and Racing) 2016-02-11
12. Vegetation Condition based on the Vegetation Condition Scale of Kaesehagen (1994)

Disclaimer:

© 2011 Pitney Bowes Software Pty Ltd. All rights reserved.
 © State of Queensland (Department of Natural Resources and Mines) 2014-2016. Data from Commonwealth of Australia (Geoscience Australia) 2009 used in creating this dataset provided under Creative Commons Australia - Attribution license. Updated data available at <http://dds.information.qld.gov.au/dds/>
 © The State of Queensland (Department of Environment and Resource Management) 2011. While every care is taken to ensure the accuracy of the Information Product, the Department of Environment and Resource Management makes no representations or warranties about its accuracy, reliability, completeness or suitability for any particular purpose and disclaims all responsibility and all liability (including without limitation, liability in negligence) for all expenses, losses, damages (including indirect or consequential damage) and costs which you might incur as a result of the product being inaccurate or incomplete in any way and for any reason.

**COOPERS GAP WIND FARM
ENVIRONMENTAL IMPACT STATEMENT**

VEGETATION CONDITION WITHIN STUDY AREA

PROJECT #:	60489152	Figure 12.6
CREATED BY:	BM	
LAST MODIFIED:	BM: 5/09/2016	
VERSION:	1	

AECOM does not warrant the accuracy or completeness of information displayed in this map and any person using it does so at their own risk. AECOM shall bear no responsibility or liability for any errors, faults, defects, or omissions in the information.