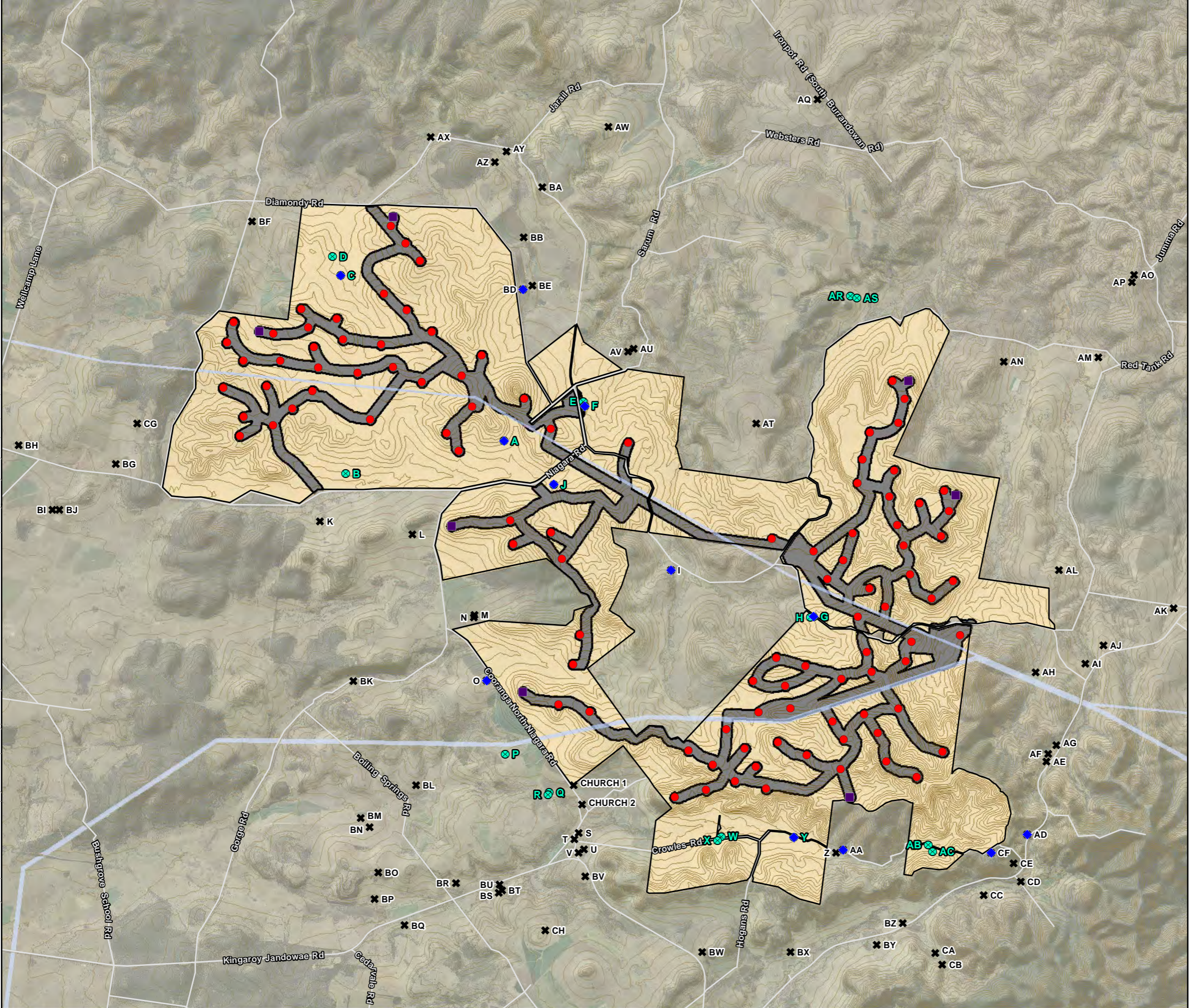




AECOM does not warrant the accuracy or completeness of information displayed in this map and any person using it does so at their own risk. AECOM shall bear no responsibility or liability for any errors, faults, defects, or omissions in the information.

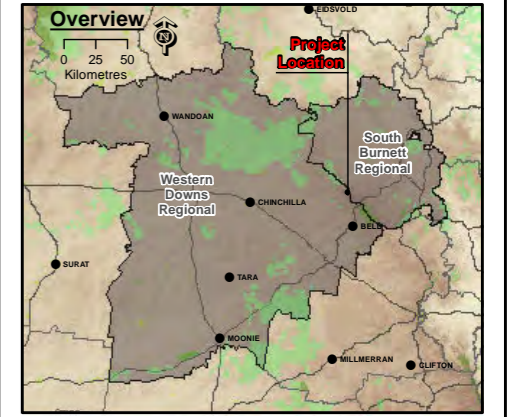


DATUM GDA 1994, PROJECTION MGA ZONE 56  
 0 1.5 3  
 Kilometres  
 1:72,500 (when printed at A3)

**Legend**

- Project Site
- Study Area
- Met Masts
- Turbines
- Participating Landowners
- Non-Participating Landowners
- Noise Monitoring Locations
- Contours 10m
- Road



*Data Sources:*

1. Project Site, Turbine Layout © 2016 AECOM Australia Pty Ltd.
2. Sural Basin 40 cm Imagery © SISP, 2013
3. Service Road, Transmission Lines © AGL 2014
4. Locality, Roads © StreetPro 2011
5. Cadastral Data (DCDB) © State of Queensland (Department of Natural Resources and Mines) 2016
6. Contours 10m © Department of Natural Resources and Mines, 2013.
7. Hillshade, based on the 25m DEM covering the SEQ, DNRM 2005
8. Local Government Area (LGA) boundaries © Australia Bureau of Statistics (ABS), 2011.
9. Vegetation Management Watercourse and Drainage feature map (1:100 000 and 1:250 000) - version 1.4 dataset © State of Queensland (Department of Natural Resources and Mines) 2016

*Software:*

StreetPro © 2011 Pitney Bowes Software Pty Ltd. All rights reserved.

© State of Queensland (Department of Natural Resources and Mines) 2014. Data from Commonwealth of Australia (Geoscience Australia) 2009 used in creating this dataset provided under Creative Commons Australia - Attribution licence. Updated data available at <http://ids.information.qld.gov.au/ids/>

© The State of Queensland (Department of Environment and Resource Management) 2011. While every care is taken to ensure the accuracy of the information Product, the Department of Environment and Resource Management makes no representations or warranties about its accuracy, reliability, completeness or suitability for any particular purpose and disclaims all responsibility and all liability (including without limitation, liability in negligence) for all expenses, losses, damages (including indirect or consequential damage) and costs which you might incur as a result of the product being inaccurate or incomplete in any way and for any reason.

**COOPERS GAP WIND FARM**  
ENVIRONMENTAL IMPACT STATEMENT

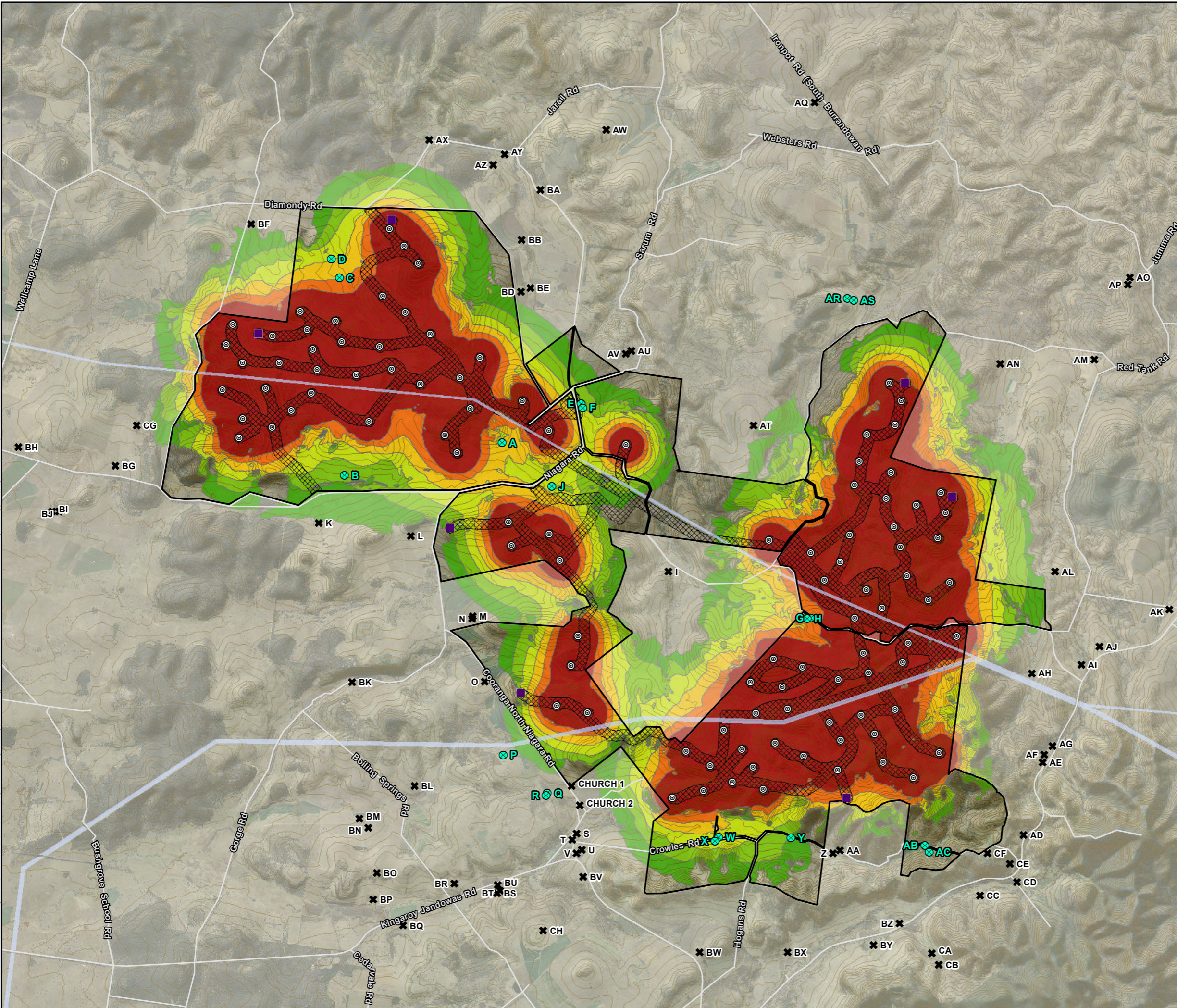
NOISE MONITORING LOCATIONS

PROJECT #:	60489152
CREATED BY:	BM
LAST MODIFIED:	BM: 5/09/2016
VERSION:	1

Figure  
4.1



AECOM does not warrant the accuracy or completeness of information displayed in this map and any person using it does so at their own risk. AECOM shall bear no responsibility or liability for any errors, faults, defects, or omissions in the information.



**AGL Energy in action.** **AECOM**

DATUM GDA 1994, PROJECTION MGA ZONE 56

0 1.5 3  
Kilometres

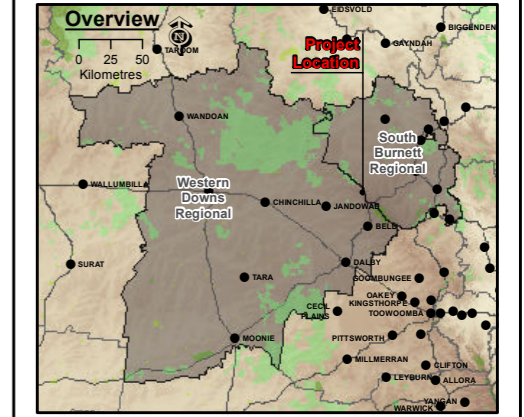
1:72,500 (when printed at A3)

**Legend**

- Project Site
- Study Area
- Met Masts
- Turbines
- Participating Landowners
- Non-Participating Landowners
- Contours 10m
- Road

*L<sub>Aeq,10min</sub> noise levels at 4 m above the ground (reference wind speed: 10 m/s at hub height)*

- ≤ 37 dB(A)
- ≤ 39 dB(A)
- ≤ 41 dB(A)
- ≤ 43 dB(A)
- ≤ 45 dB(A)
- >45 dB(A)



**Data Sources:**

1. Project Site, Turbine Layout © 2016 AECOM Australia Pty Ltd.
2. Surat Basin 40 cm Imagery © 5ISP, 2013
3. Service Road, Transmission Lines © AGL, 2014
4. Locality, Roads © StreetPro 2011
5. Cadastral Data (DCDB) © State of Queensland (Department of Natural Resources and Mines) 2016
6. Contours 10m © Department of Natural Resources and Mines, 2013.
7. Hillshade, based on the 25m DEM covering the SEQ, INRM 2005.
8. Local Government Area (LGA) boundaries © Australia Bureau of Statistic (ABS), 2011.
9. Vegetation Management Watercourse and Drainage feature map (1:100 000 and 1:250 000) - version 1.4 dataset © State of Queensland (Department of Natural Resources and Mines) 2016
10. Noise Contours © AECOM, 2016

**Disclaimer:**  
StreetPro © 2011 Pitney Bowes Software Pty Ltd. All rights reserved.

© State of Queensland (Department of Natural Resources and Mines) 2014. Data from Commonwealth of Australia (Geoscience Australia) 2009 used in creating this dataset provided under Creative Commons Attribution - Attribution licence. Updated data available at <http://ids.information.qld.gov.au/ids/>

© The State of Queensland (Department of Environment and Resource Management) 2011. While every care is taken to ensure the accuracy of the Information Product, the Department of Environment and Resource Management makes no representations or warranties about its accuracy, reliability, completeness or suitability for any particular purpose and disclaims all responsibility and all liability (including without limitation, liability in negligence) for all expenses, losses, damages (including indirect or consequential damage) and costs which you might incur as a result of the product being inaccurate or incomplete in any way and for any reason.

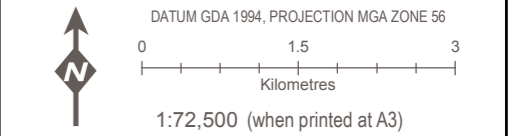
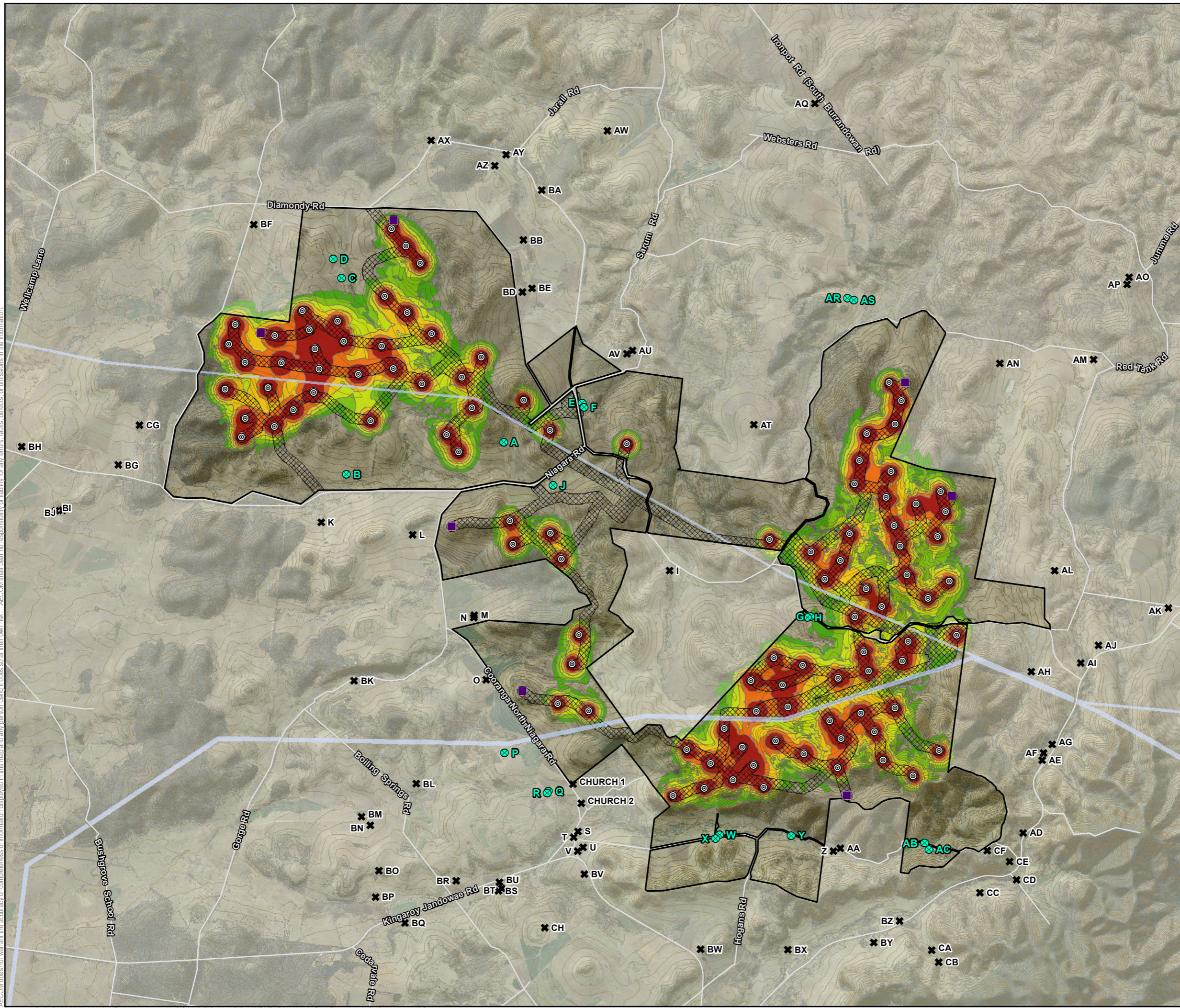
**COOPERS GAP WIND FARM ENVIRONMENTAL IMPACT STATEMENT**

**L<sub>Aeq,10MIN</sub> NOISE CONTOUR MAP**

PROJECT #:	60489152	<b>Figure 4.2</b>
CREATED BY:	BM	
LAST MODIFIED:	BM: 7/09/2016	
VERSION:	1	



AECOM does not warrant the accuracy or completeness of information displayed in this map and any person using it does so at their own risk. AECOM shall bear no responsibility or liability for any errors, faults, defects, or omissions in the information.

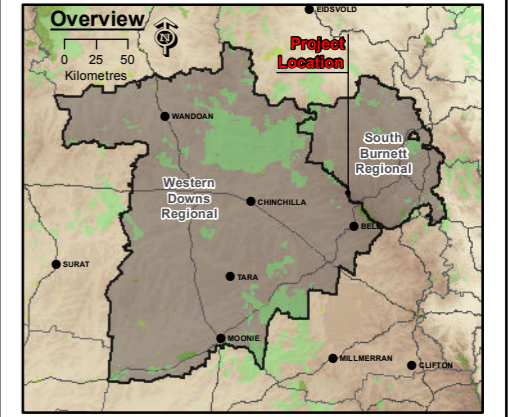


**Legend**

- Project Site
- Study Area
- Met Masts
- Turbines
- Participating Landowners
- Non-Participating Landowners
- Contours 10m
- Road

*L<sub>Ceq,10min</sub> noise levels at 4 m above the ground (reference wind speed: 10 m/s at hub height)*

- ≤ 61 dB(C)
- ≤ 62 dB(C)
- ≤ 63 dB(C)
- ≤ 64 dB(C)
- ≤ 65 dB(C)
- > 65 dB(C)



**Data Sources:**

1. Project Site, Turbine Layout © 2016 AECOM Australia Pty Ltd.
2. Surat Basin 40 cm Imagery © SISP, 2013
3. Service Road, Transmission Lines © AGL, 2014
4. Locality, Roads © StreetPro 2011
5. Cadastral Data (DCDB) © State of Queensland (Department of Natural Resources and Mines) 2016
6. Contours 10m © Department of Natural Resources and Mines, 2013.
7. Hillshade, based on the 25m DEM covering the SEQ, DNRM 2005
8. Local Government Area (LGA) boundaries © Australia Bureau of Statistic (ABS), 2011.
9. Vegetation Management Watercourse and Drainage feature map (1:100 000 and 1:250 000) - version 1.4 dataset © State of Queensland (Department of Natural Resources and Mines) 2016
10. Noise Contours © AECOM, 2016

**Disclaimer:**  
StreetPro © 2011 Pitney Bowes Software Pty Ltd. All rights reserved.

© State of Queensland (Department of Natural Resources and Mines) 2014. Data from Commonwealth of Australia (Geoscience Australia), 2009 used in creating this dataset provided under Creative Commons Australia - Attribution license. Updated data available at <http://dds.information.qld.gov.au/dds/>

© The State of Queensland (Department of Environment and Resource Management) 2011. While every care is taken to ensure the accuracy of the Information Product, the Department of Environment and Resource Management makes no representations or warranties about its accuracy, reliability, completeness or suitability for any particular purpose and disclaims all responsibility and all liability (including without limitation, liability in negligence) for all expenses, losses, damages (including indirect or consequential damage) and costs which you might incur as a result of the product being inaccurate or incomplete in any way and for any reason.

**COOPERS GAP WIND FARM ENVIRONMENTAL IMPACT STATEMENT**

**L<sub>Ceq,10min</sub> NOISE CONTOUR MAP**

PROJECT#:	60489152	<b>Figure 4.3</b>
CREATED BY:	BM	
LAST MODIFIED:	BM: 20/09/2016	
VERSION:	1	