





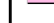






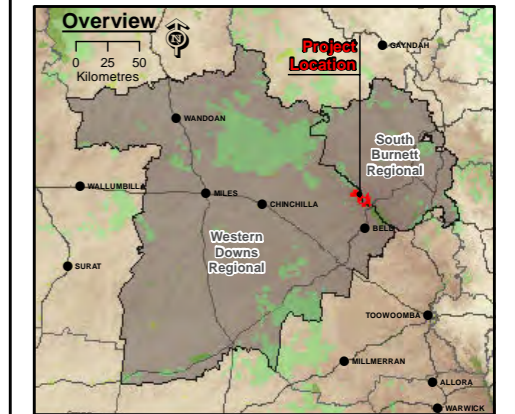


- Legend**
-  Project Site
  -  Study Area
  -  Locality
  -  Turbine
  -  Met Masts
  -  Proposed Service Road / Cable
  -  Proposed Underground Cable
  -  Proposed 33kV Overhead Cable
  -  Contours 10m
  -  Road
  -  Existing High Voltage Transmission Line Easement
  -  Proposed Substation
  -  Proposed Laydown Areas



- Data Sources:*
1. Project Site, Turbine Layout © 2016 AECOM Australia Pty Ltd.
  2. Sarat Basin 40 cm Imagery © SISP, 2013
  3. Service Road, Transmission Lines © AGL, 2014
  4. Locality, Roads © StreetPro 2011
  5. Cadastral Data (DCDB) © State of Queensland (Department of Natural Resources and Mines) 2016
  6. Contours 10m © Department of Natural Resources and Mines, 2013.
  7. Hillshade, based on the 25m DEM covering the SEQ, INRM 2005
  8. Local Government Area (LGA) boundaries © Australia Bureau of Statistic (ABS), 2011.
  9. Vegetation Management Watercourse and Drainage feature map (1:100 000 and 1:250 000) - version 1.4 dataset © State of Queensland (Department of Natural Resources and Mines) 2016
  10. Background Image, Captured on 27/04/2011, Bing Maps

*Disclaimer:*  
 StreetPro © 2011 Pitney Bowes Software Pty Ltd. All rights reserved.  
 © State of Queensland (Department of Natural Resources and Mines) 2014. Data from Commonwealth of Australia (Geoscience Australia) 2009 used in creating this dataset provided under Creative Commons Australia - Attribution licence. Updated data available at <http://rids.information.qld.gov.au/rids/>

© The State of Queensland (Department of Environment and Resource Management) 2011. While every care is taken to ensure the accuracy of the Information Product, the Department of Environment and Resource Management makes no representations or warranties about its accuracy, reliability, completeness or suitability for any particular purpose and disclaims all responsibility and all liability (including without limitation, liability in negligence) for all expenses, losses, damages (including indirect or consequential damage) and costs which you might incur as a result of the product being inaccurate or incomplete in any way and for any reason.

**COOPERS GAP WIND FARM  
 ENVIRONMENTAL IMPACT STATEMENT**

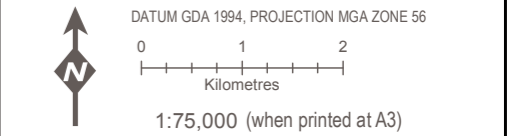
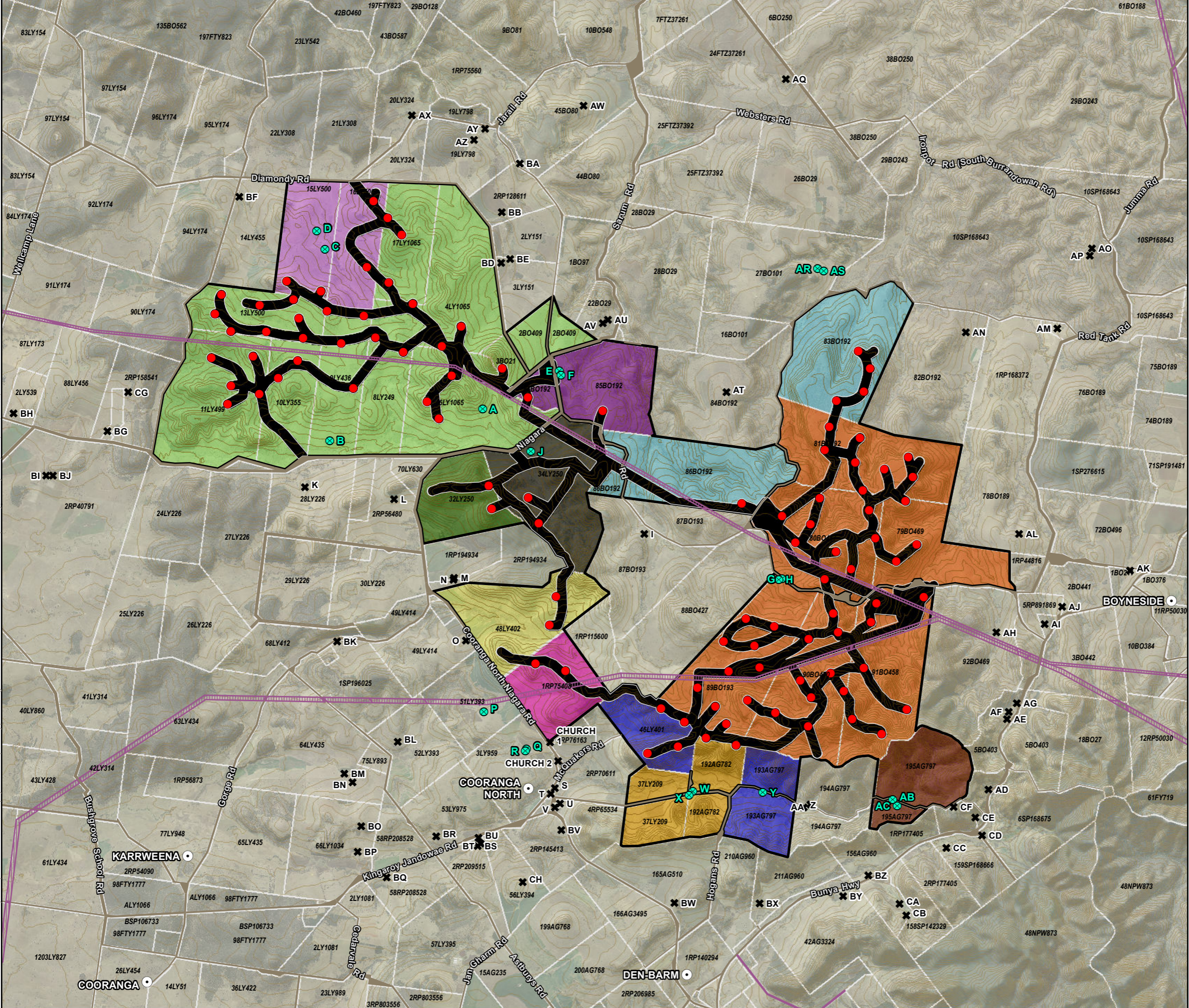
**PROJECT LAYOUT**

PROJECT #: 60489152  
 CREATED BY: BM  
 LAST MODIFIED: BM: 5/09/2016  
 VERSION: 1

**Figure  
 2.1**

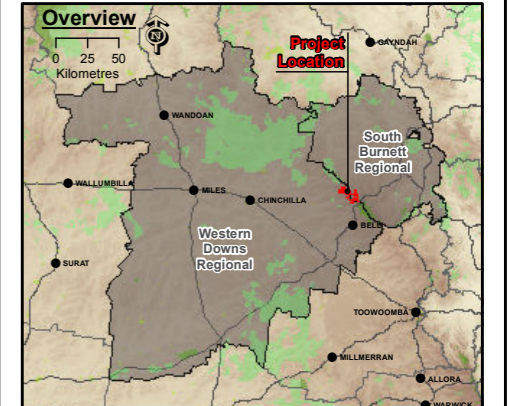
AECOM does not warrant the accuracy or completeness of information displayed in this map and any person using it does so at their own risk. AECOM shall bear no responsibility or liability for any errors, faults, defects, or omissions in the information.

AECOM does not warrant the accuracy or completeness of information displayed in this map and any person using it does so at their own risk. AECOM shall bear no responsibility or liability for any errors, faults, defects or omissions in the information.



- Legend**
- Project Site
  - Study Area
  - Turbines
  - Participating Landowners
  - Non-Participating Landowners
  - Contours 10m
  - Road
  - Easement
  - Road Casement

- Parcel ID**
- 81BO192, 80BO457, 79BO469, 89BO193, 91BO458, 90BO470
  - 93AG797, 193AG797, 46LY401
  - 15LY500, 16LY500
  - 85BO192
  - 195AG797
  - 83BO192, 86BO192
  - 48LY402
  - 32LY250
  - 2RP115600, 1RP75408
  - 37LY209, 192AG782
  - 34LY250
  - 6LY1065, 4LY1065, 17LY1065, 10LY355, 8LY249, 2BO409, 3BO21, 9LY436, 11LY499, 13LY500



**Data Sources:**

1. Project Site, Turbine Layout © 2016 AECOM Australia Pty Ltd.
2. Surfer Base 40 cm Imagery © GISP 2013
3. Service Road, Transmission Lines © AGL 2014
4. Locality, Roads © StreetPro 2011
5. Cadastral Data (DCCB) © State of Queensland (Department of Natural Resources and Mines) 2016
6. Contours 10m © Department of Natural Resources and Mines, 2013.
7. Hillshade, based on the 25m DEM covering the SEQ, DNRM 2005
8. Local Government Area (LGA) boundaries © Australia Bureau of Statistics (ABS), 2011.
9. Vegetation Management Watercourse and Drainage Feature map (1:100,000 and 1:250,000) - version 1.4 dataset © State of Queensland (Department of Natural Resources and Mines) 2016
10. Background Image, Captured on 27/04/2011, Bing Maps.

**Disclaimer:**  
StreetPro © 2011 Pitney Bowes Software Pty Ltd. All rights reserved.

© State of Queensland (Department of Natural Resources and Mines) 2014. Data from Commonwealth of Australia (Geoscience Australia) 2009 used in creating this dataset provided under Creative Commons Attribution - Attribution licence updated data available at <http://dds.information.qld.gov.au/dds/>

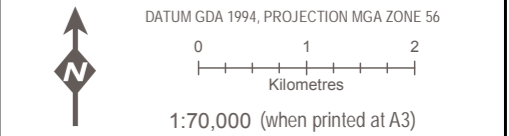
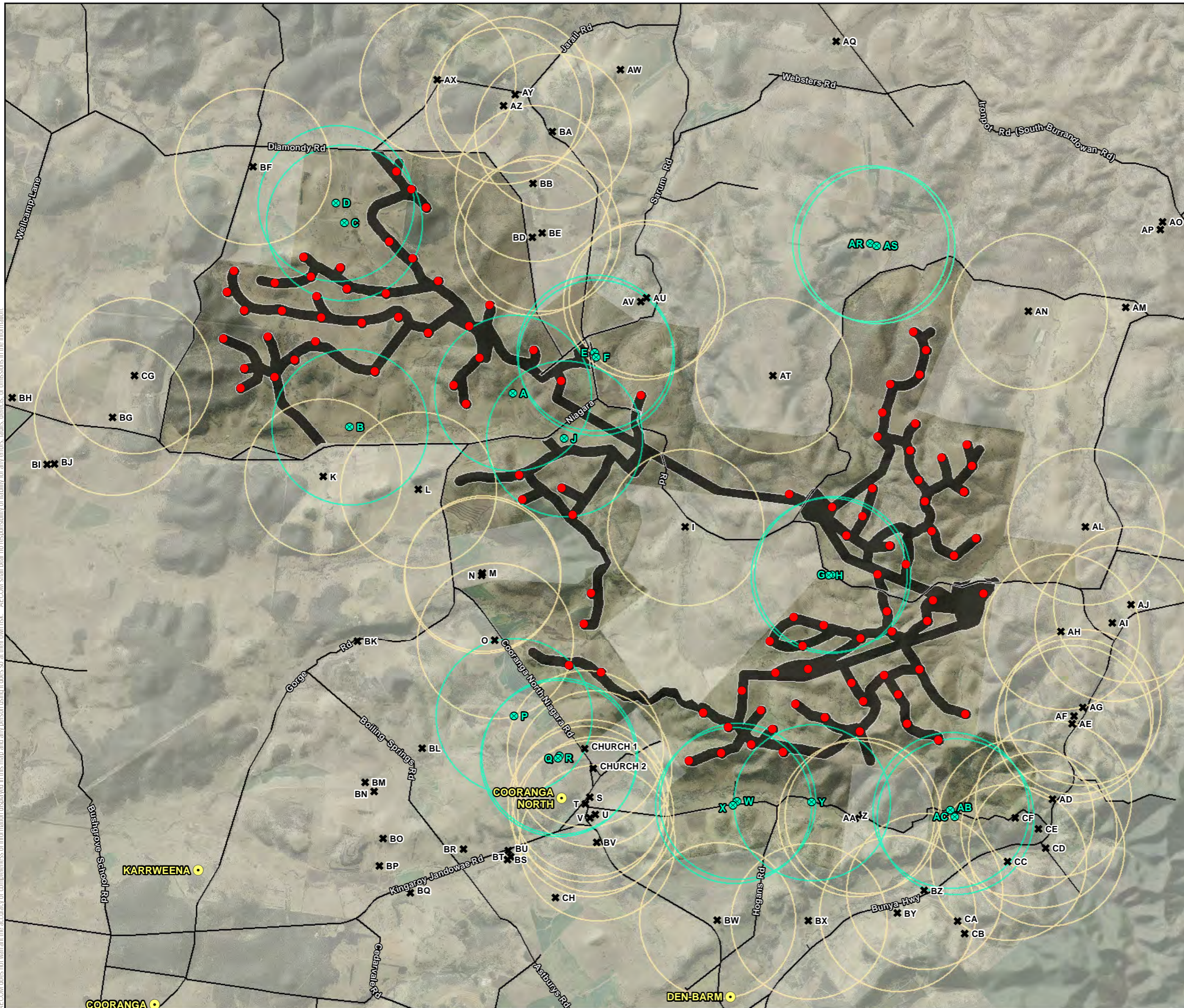
© The State of Queensland (Department of Environment and Resource Management) 2011. While every care is taken to ensure the accuracy of the Information Product, the Department of Environment and Resource Management makes no representations or warranties about its accuracy, reliability, completeness or suitability for any particular purpose and disclaims all responsibility and all liability (including without limitation, liability in negligence) for all expenses, losses, damages (including indirect or consequential damage) and costs which you might incur as a result of the product being inaccurate or incomplete in any way and for any reason.

**COOPERS GAP WIND FARM ENVIRONMENTAL IMPACT STATEMENT**

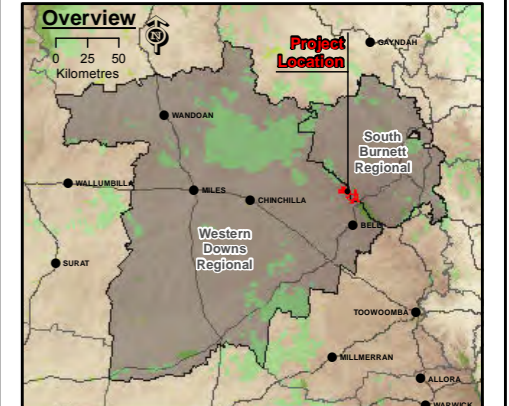
LANDOWNER PROPERTIES	
PROJECT #:	60489152
CREATED BY:	BM
LAST MODIFIED:	BM: 13/09/2016
VERSION:	1

**Figure 2.2**

AECOM does not warrant the accuracy or completeness of information displayed in this map and any person using it does so at their own risk. AECOM shall bear no responsibility or liability for any errors, omissions, faults, defects, or omissions in the information.



- Legend**
- Project Site
  - Locality
  - Turbines
  - Participating Landowners
  - Non-Participating Landowners
  - Road
  - 1,500m setback – Participating Landowners\*
  - 1,500m setback – Non-Participating Landowners\*
- Note:**  
\*only setbacks intersecting Study Area shown



**Data Sources:**

1. Project Site, Turbine Layout © 2016 AECOM Australia Pty Ltd.
2. Rural Basin 40 cm Imagery © SISP 2013
3. Service Road, Transmission Lines © AGL 2014
4. Locality, Roads © StreetPro 2011
5. Cadastral Data (GCDB) © State of Queensland (Department of Natural Resources and Mines) 2016
6. Corbours 10m © Department of Natural Resources and Mines, 2013.
7. Hillshade, based on the 25m DEM covering the SEQ, DNRM 2005.
8. Local Government Area (LGA) boundaries © Australia Bureau of Statistics (ABS), 2011.
9. Vegetation Management Watercourse and Drainage Feature map (1:100,000 and 1:250,000) - version 1.4 dataset © State of Queensland (Department of Natural Resources and Mines) 2016.
10. Background Image, Captured on 27/04/2011, Bing Maps.

**Disclaimer:**  
StreetPro © 2011 Pitney Bowes Software Pty Ltd. All rights reserved.  
© State of Queensland (Department of Natural Resources and Mines) 2014. Data from Commonwealth of Australia (Geoscience Australia) 2009 used in creating this dataset provided under Creative Commons Australia - Attribution License. Updated data available at <http://dds.information.qld.gov.au/dds/>  
© The State of Queensland (Department of Environment and Resource Management) 2011. While every care is taken to ensure the accuracy of the Information Product, the Department of Environment and Resource Management makes no representations or warranties about its accuracy, reliability, completeness or suitability for any particular purpose and disclaims all responsibility and all liability (including without limitation, liability in negligence) for all expenses, losses, damages (including indirect or consequential damage) and costs which you might incur as a result of the product being inaccurate or incomplete in any way and for any reason.

**COOPERS GAP WIND FARM ENVIRONMENTAL IMPACT STATEMENT**

**SENSITIVE LAND USE SEPARATION**

PROJECT #:	60489152	<b>Figure 2.3</b>
CREATED BY:	BM	
LAST MODIFIED:	BM: 5/09/2016	
VERSION:	1	