

Revised Pre-Construction Final Layout – Wind Turbine GPS Coordinates

September 2022

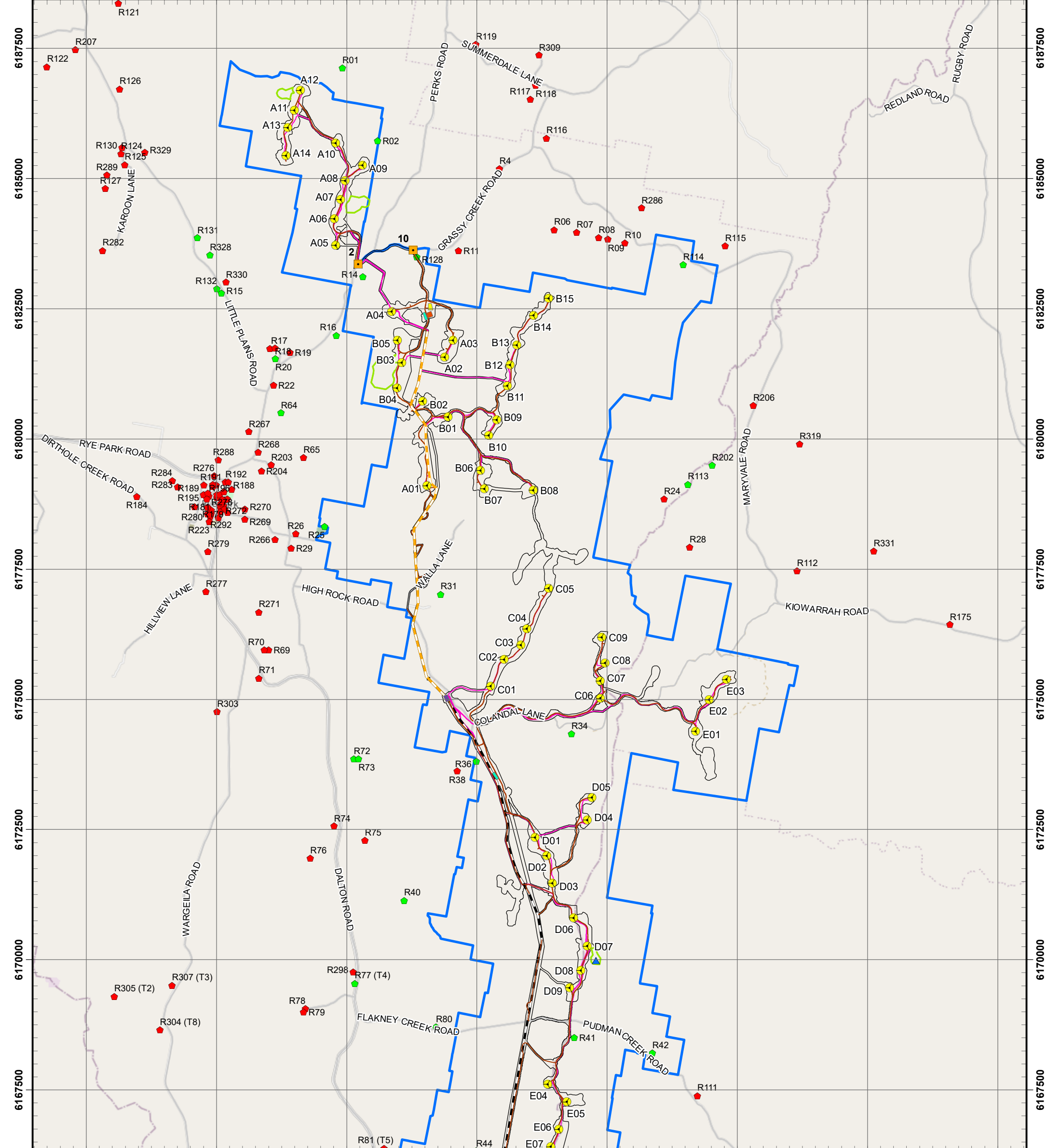
Indicative Wind Turbine ID	Final Project Wind Turbine ID	Indicative Wind Turbine Coordinates		Pre-Construction Final Wind Turbine Coordinates ¹		Change (m) ²
		Easting	Northing	Easting	Northing	
43	A01	679027	6179114	679040	6179105	16
25	A02	679389	6181591	679379	6181571	22
22	A03	679549	6181989	679540	6181894	95
18	A04	678502	6182471	678360	6182447	144
12	A05	677322	6183750	677289	6183722	43
11	A06	677266	6184203	677265	6184235	32
9	A07	677384	6184591	677385	6184600	9
7	A08	677490	6184967	677470	6184960	21
5	A09	677805	6185279	677801	6185260	19
151	A10	677325	6185689	677290	6185685	35
2	A11	676471	6186291	676495	6186315	34
1	A12	676629	6186672	676611	6186698	32
3	A13	676320	6185897	676370	6185980	97
4	A14	676320	6185509	676330	6185440	70
135	B01	679301	6180383	679445	6180420	149
30	B02	679009	6180754	678960	6180720	60
26	B03	678511	6181575	678555	6181465	118
28	B04	678484	6181184	678470	6180980	204
21	B05	678588	6181965	678475	6181895	133
39	B06	680098	6179394	680065	6179394	33
41	B07	680008	6179119	680142	6179044	154
42	B08	680994	6179015	681082	6179015	88
31	B09	680367	6180463	680380	6180365	99
36	B10	680242	6180109	680225	6180063	49
138	B11	680607	6181022	680585	6181020	22
137	B12	680652	6181414	680638	6181420	15
136	B13	680809	6181821	680765	6181800	49
20	B14	681054	6182312	681090	6182370	68

¹ Note that the layout will continue to be refined through construction stages, including micro-siting of the wind turbines from the 'indicative coordinates', as permitted under the conditions of the Development Consent and EPBC Approval. Prior to the commencement of operations, the Approval Holder will submit to the Minister completed layout plans (including updated GPS coordinates) prepared in accordance with Condition 15 of the EPBC Approval and Schedule 5 Condition 6 of the Development Consent.

² Changes to the wind turbine locations have been rounded to the nearest metre.

Indicative Wind Turbine ID	Final Project Wind Turbine ID	Indicative Wind Turbine Coordinates		Pre-Construction Final Wind Turbine Coordinates ¹		Change (m) ²
		Easting	Northing	Easting	Northing	
17	B15	681368	6182678	681380	6182700	25
67	C01	680267	6175231	680261	6175250	20
141	C02	680488	6175710	680527	6175765	67
62	C03	680830	6175999	680844	6176040	43
61	C04	680965	6176347	680955	6176355	13
51	C05	681355	6177078	681375	6177130	56
69	C06	682302	6174979	682375	6175020	84
66	C07	682384	6175319	682365	6175350	36
63	C08	682309	6175645	682460	6175698	160
58	C09	682400	6176161	682400	6176185	24
73	D01	681120	6172346	681120	6172346	0
74	D02	681358	6172003	681345	6171994	16
75	D03	681388	6171634	681448	6171468	177
72	D04	682099	6172655	682120	6172680	33
71	D05	682195	6173075	682205	6173110	36
150	D06	682052	6170803	681860	6170800	192
80	D07	682014	6170267	682120	6170260	106
82	D08	682004	6169806	681992	6169788	22
83	D09	681810	6169398	681780	6169460	69
146	E01	684178	6174388	684201	6174386	23
68	E02	684506	6175044	684460	6174990	71
65	E03	684812	6175374	684795	6175380	18
84	E04	681373	6167591	681360	6167605	19
85	E05	681917	6167300	681730	6167265	190
86	E06	681730	6166773	681575	6166735	160
87	E07	681536	6166404	681417	6166408	119
128	F01	683138	6151393	683180	6151470	88
130	F02	683127	6151016	683140	6151140	125
131	F03	683001	6150684	683135	6150810	184
122	F04	683572	6152343	683575	6152362	19
119	F05	683654	6152722	683634	6152708	24
127	F06	684307	6151723	684325	6151700	29
129	F07	684402	6151298	684270	6151305	132
125	G01	684396	6152175	684380	6152150	30
142	G02	684592	6152523	684565	6152465	64
120	G03	684987	6152789	684925	6152745	76
124	G04	685103	6152217	685135	6152262	55
145	G05	686104	6154215	686105	6154240	25

672500 675000 677500 680000 682500 685000 687500 690000



6187500 6185000 6182500 6180000 6177500 6175000 6172500 6170000 6167500

Legend

- Wind Turbine Layout
- Site Access Points
- Permanent Met Masts
- Access Tracks
- Underground Cable (33kV)
- Transmission Line (33kV)
- Transmission Line (330kV)
- TransGrid Transmission Line (330kV)
- Connection Substation
- Collector Substation
- Temporary Batch Plants
- O&M Facility
- Temporary Construction Compounds
- Temporary Laydown Areas
- Development Corridor – Wind Farm
- Development Corridor – Permanent Met Masts
- Project Boundary

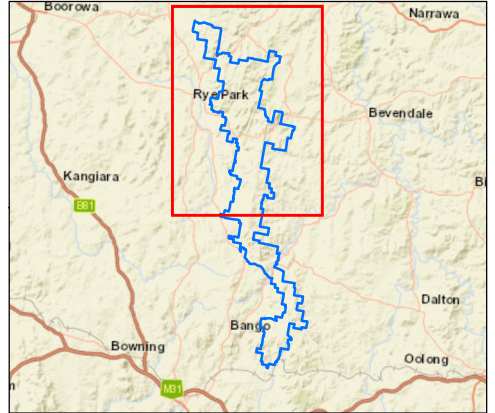
Residences

- Associated
- Non-Associated

Date: 29/09/2022
Version: E

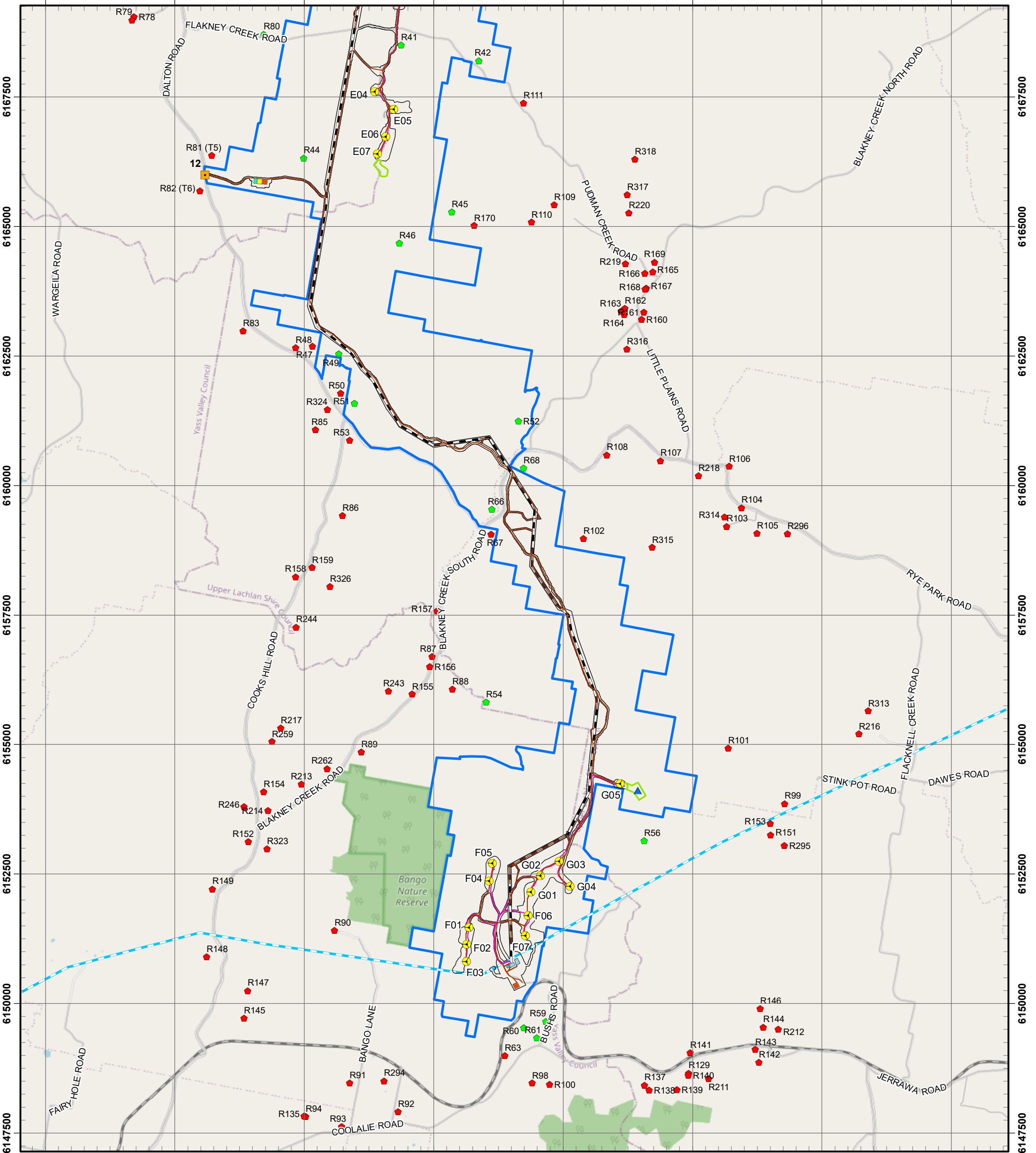
0 2,500
Meters

GDA 1994 MGA Zone 55
1:70,000



Document Path: G:\GIS\Project Data\Development\NSWRyePark\Maps\Working\RPWF_RL134E_Modification 2 Layout Plan_20220929.mxd





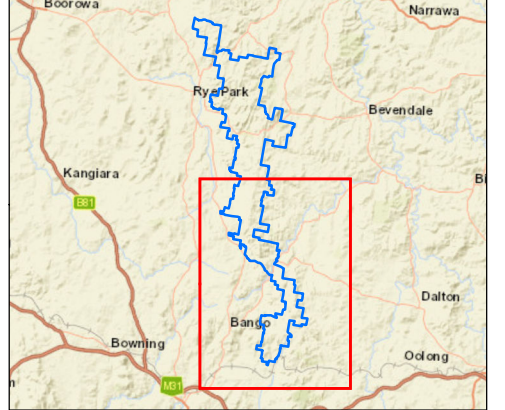
Legend

Wind Turbine Layout	O&M Facility
Site Access Points	Temporary Construction Compounds
Permanent Met Masts	Temporary Laydown Areas
Access Tracks	Development Corridor – Wind Farm
Underground Cable (33kV)	Development Corridor – Permanent Met Masts
Transmission Line (33kV)	Project Boundary
Transmission Line (330kV)	Residences
TransGrid Transmission Line (330kV)	Associated
Connection Substation	Non-Associated
Collector Substation	
Temporary Batch Plants	

Date: 29/09/2022
Version: E

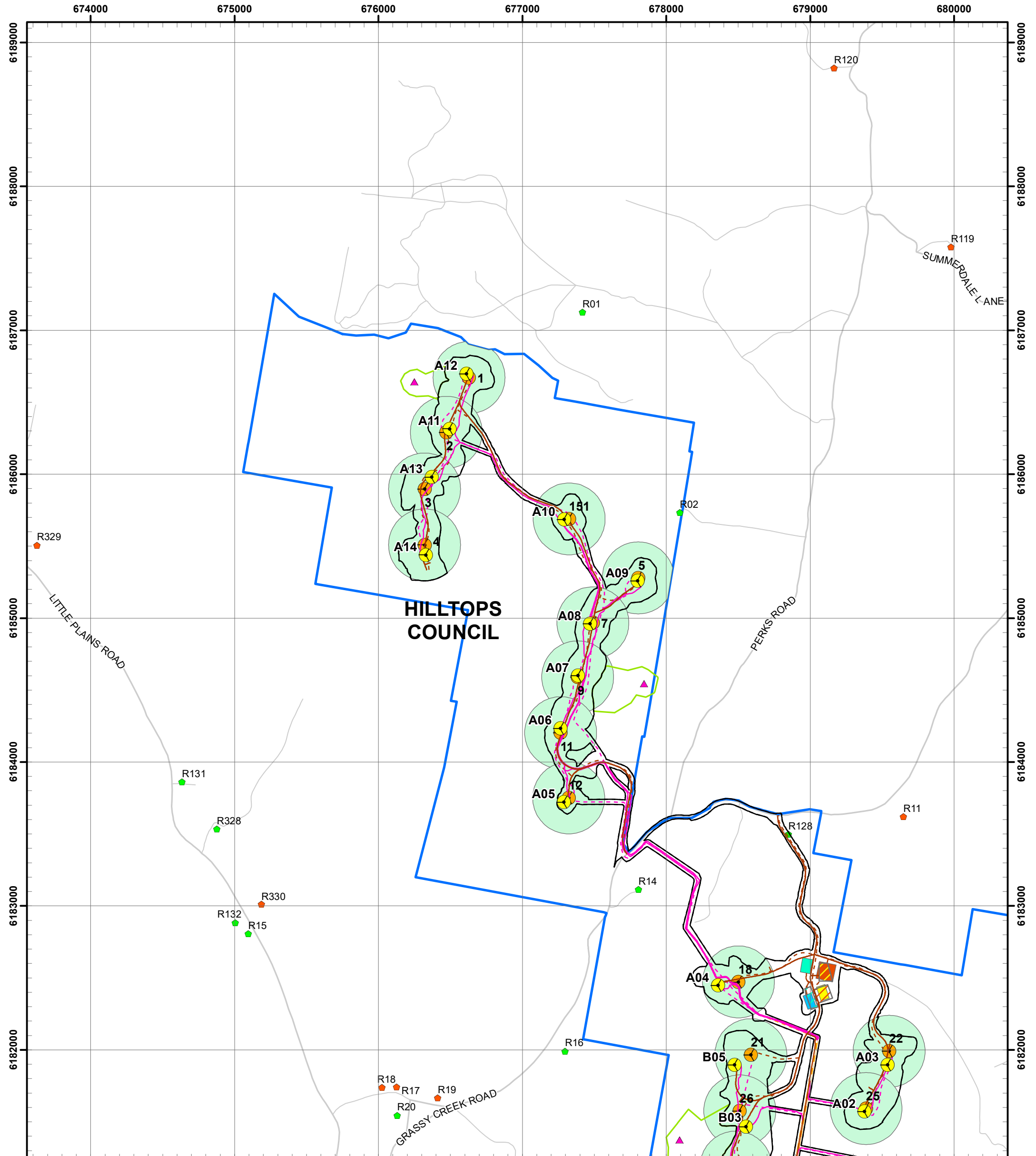
0 2,500
Meters

GDA 1994 MGA Zone 55
1:70,000



Document Path: G:\GIS\Project Data\Development\NSWRyePark\Maps\Working\RPWF_RL134E_Modification 2 Layout Plan_20220929.mxd

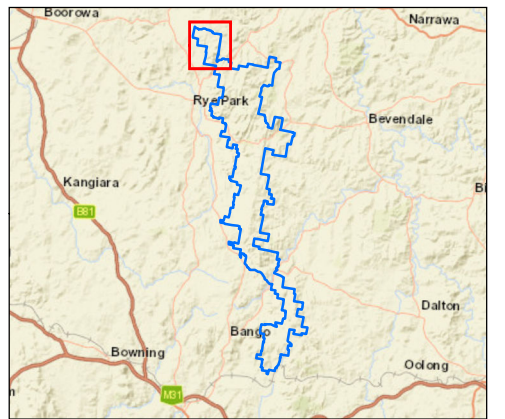




Revised Final Pre-Construction Layout		Approved Project	
	Wind Turbine Layout		Wind Turbine Layout
	Permanent Met Masts		Permanent Met Masts
	Transmission Line (33kV)		Transmission Line (33kV)
	Transmission Line (330kV)		Transmission Line (Up to 330kV)
	Underground Cable (33kV)		Underground Cable (33kV)
	Access Tracks		Access Tracks
	Connection Substation		Connection Substation
	Collector Substation		Collector Substation
	O&M Facility		O&M Facilities
	Temporary Construction Compounds		Temporary Construction Compounds
	Temporary Batch Plants		Temporary Batch Plants
	Temporary Laydown Areas		Temporary Laydown Areas
	Development Corridor		Development Corridor
	Development Corridor - Permanent Met Masts		Development Corridor - Permanent Met Masts
	Local Government Area		Transgrid Transmission Line (330kV)
	Project Boundary		

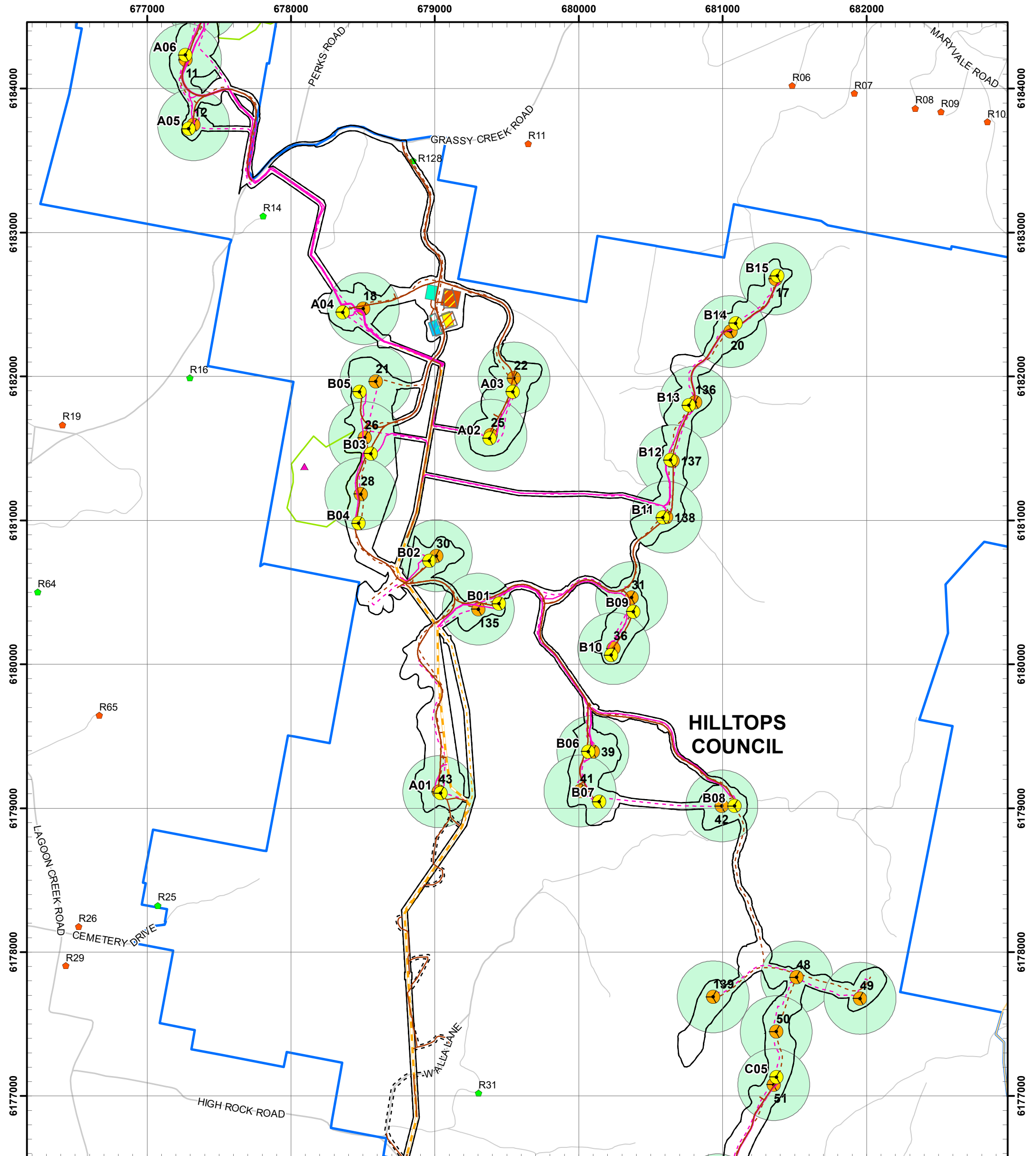
Date: 29/09/2022
Version: D

Meters
GDA 1994 MGA Zone 55
1:25,000



Document Path: G:\GIS\Project Data\Development\NSW\RyePark\Maps\Working\RPWF_ALI64D_Infrastructure Changes_20220929.mxd

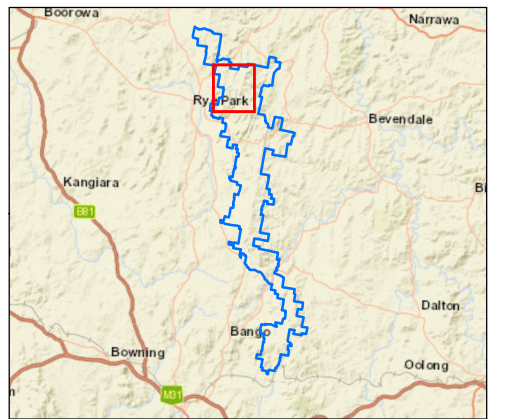




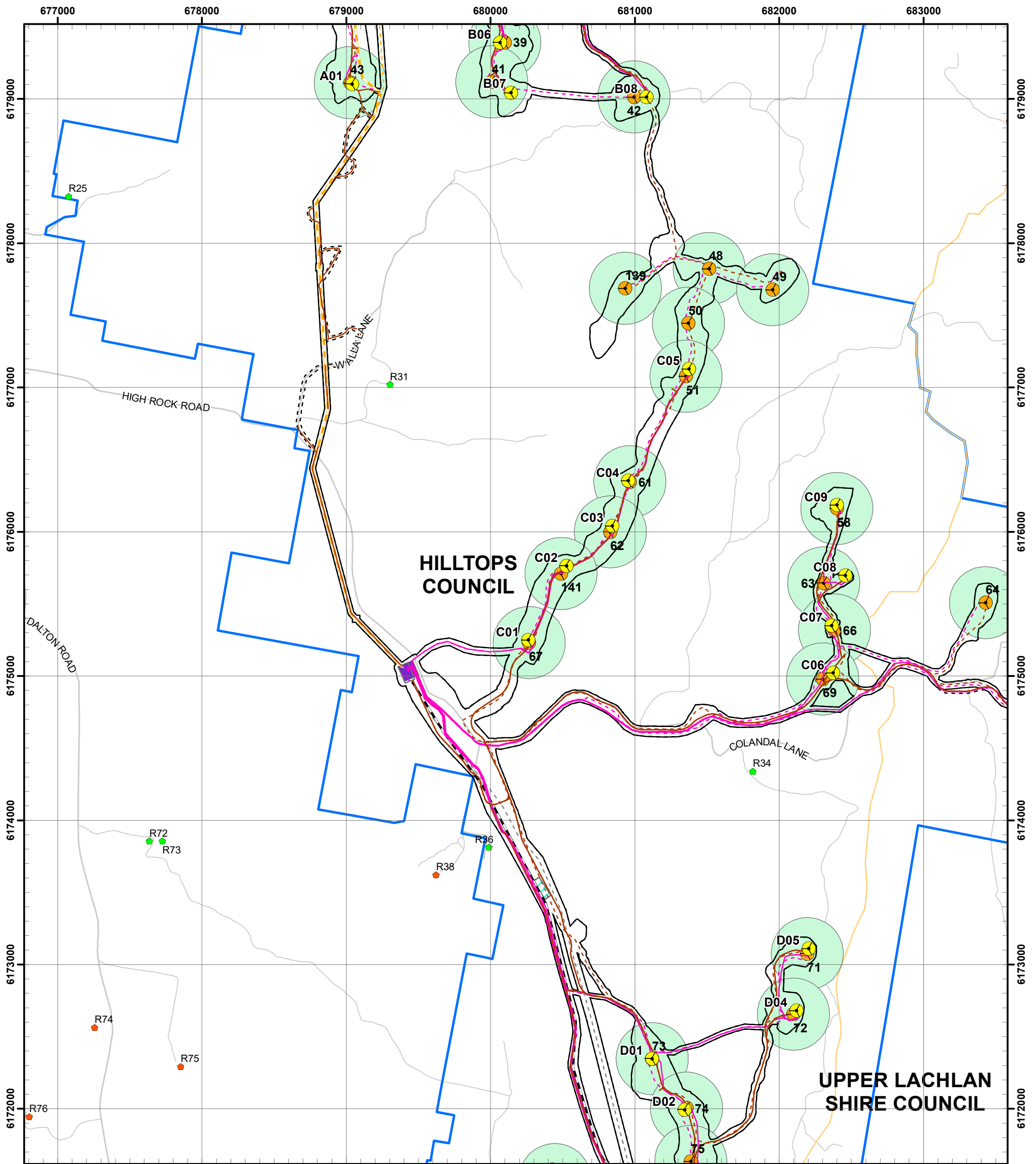
Revised Final Pre-Construction Layout		Approved Project	
Wind Turbine Layout	Wind Turbine Layout	Micro-siting Areas	Local Government Area
Permanent Met Masts	Permanent Met Masts	Transmission Line (33kV)	Transgrid Transmission Line (330kV)
Transmission Line (33kV)	Transmission Line (Up to 330kV)	Underground Cable (33kV)	Project Boundary
Transmission Line (330kV)	Underground Cable (33kV)	Access Tracks	
Underground Cable (33kV)	Access Tracks	Collector Substation	
Access Tracks	Collector Substation	O&M Facility	
Connection Substation	O&M Facility	Temporary Construction Compounds	
Collector Substation	Temporary Construction Compounds	Temporary Batch Plants	
O&M Facility	Temporary Batch Plants	Temporary Laydown Areas	
Temporary Construction Compounds	Temporary Laydown Areas	Development Corridor	
Temporary Batch Plants	Development Corridor	Development Corridor - Permanent Met Masts	
Temporary Laydown Areas	Development Corridor - Permanent Met Masts		
Development Corridor			

Date: 29/09/2022
Version: D

Meters
GDA 1994 MGA Zone 55
1:25,000



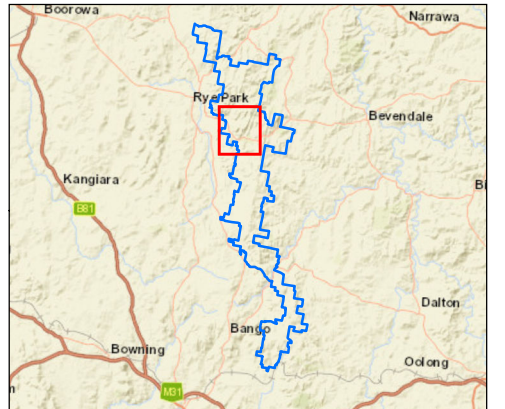
Document Path: G:\GIS\Project Data\Development\NSWRyePark\Maps\Working\RPWF_ALI64D_Infrastructure Changes_20220929.mxd



Revised Final Pre-Construction Layout		Approved Project	
Wind Turbine Layout	Wind Turbine Layout	Micro-siting Areas	Micro-siting Areas
Permanent Met Masts	Permanent Met Masts	Permanent Met Masts	Permanent Met Masts
Transmission Line (33kV)	Transmission Line (33kV)	Transmission Line (33kV)	Transmission Line (Up to 330kV)
Transmission Line (330kV)	Transmission Line (330kV)	Underground Cable (33kV)	Underground Cable (33kV)
Underground Cable (33kV)	Underground Cable (33kV)	Access Tracks	Access Tracks
Access Tracks	Access Tracks	Collector Substation	Collector Substation
Connection Substation	Connection Substation	Connection Substation	Connection Substation
Collector Substation	Collector Substation	O&M Facilities	O&M Facilities
O&M Facility	O&M Facility	Temporary Construction Compounds	Temporary Construction Compounds
Temporary Construction Compounds	Temporary Construction Compounds	Temporary Batch Plants	Temporary Batch Plants
Temporary Batch Plants	Temporary Batch Plants	Temporary Laydown Areas	Temporary Laydown Areas
Temporary Laydown Areas	Temporary Laydown Areas	Development Corridor	Development Corridor
Development Corridor	Development Corridor	Development Corridor - Permanent Met Masts	Development Corridor - Permanent Met Masts
Local Government Area	Local Government Area	Transgrid Transmission Line (330kV)	Transgrid Transmission Line (330kV)
Project Boundary	Project Boundary		

Date: 29/09/2022
Version: D

Meters
GDA 1994 MGA Zone 55
1:25,000



Document Path: G:\GIS\Project Data\Development\NSWR\YerPark\Maps\Working\RPWF_ALI64D_Infrastructure Changes_20220929.mxd



682000

683000

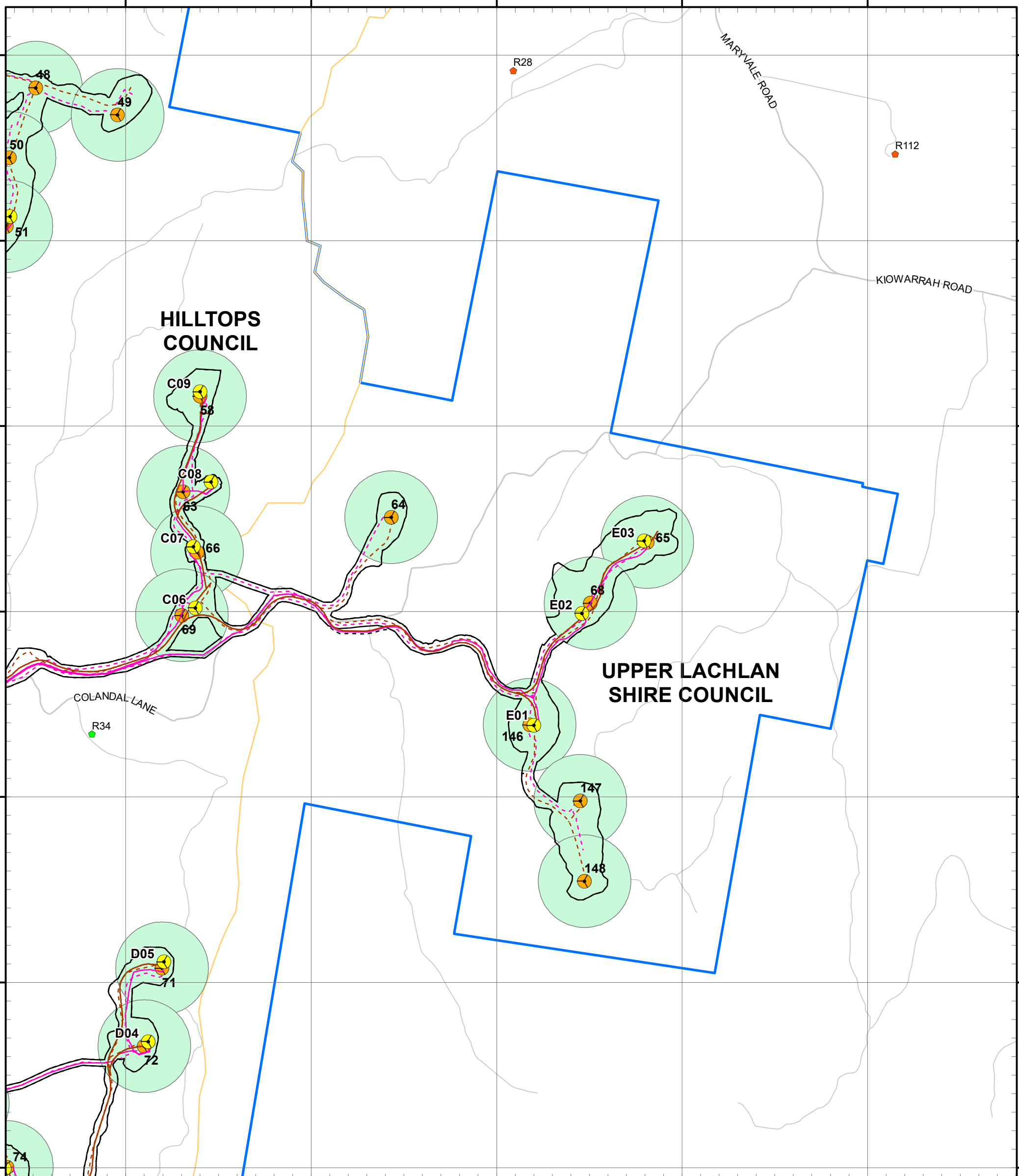
684000

685000

686000

6178000
6177000
6176000
6175000
6174000
6173000
6172000

6178000
6177000
6176000
6175000
6174000
6173000
6172000

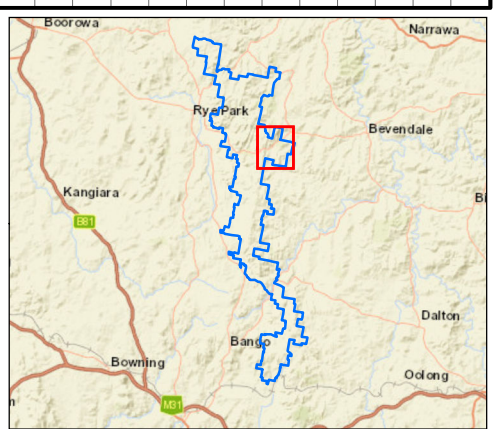


Revised Final Pre-Construction Layout	Approved Project	Local Government Area
Wind Turbine Layout	Wind Turbine Layout	Local Government Area
Permanent Met Masts	Micro-siting Areas	Transgrid Transmission Line (330kV)
Transmission Line (33kV)	Permanent Met Masts	Project Boundary
Transmission Line (330kV)	Transmission Line (33kV)	
Underground Cable (33kV)	Transmission Line (Up to 330kV)	
Access Tracks	Underground Cable (33kV)	
Connection Substation	Access Tracks	
Collector Substation	Collector Substation	
O&M Facility	Connection Substation	
Temporary Construction Compounds	O&M Facilities	
Temporary Batch Plants	Temporary Construction Compounds	
Temporary Laydown Areas	Temporary Batch Plants	
Development Corridor	Temporary Laydown Areas	
	Development Corridor	
	Development Corridor - Permanent Met Masts	

Date: 29/09/2022
Version: D

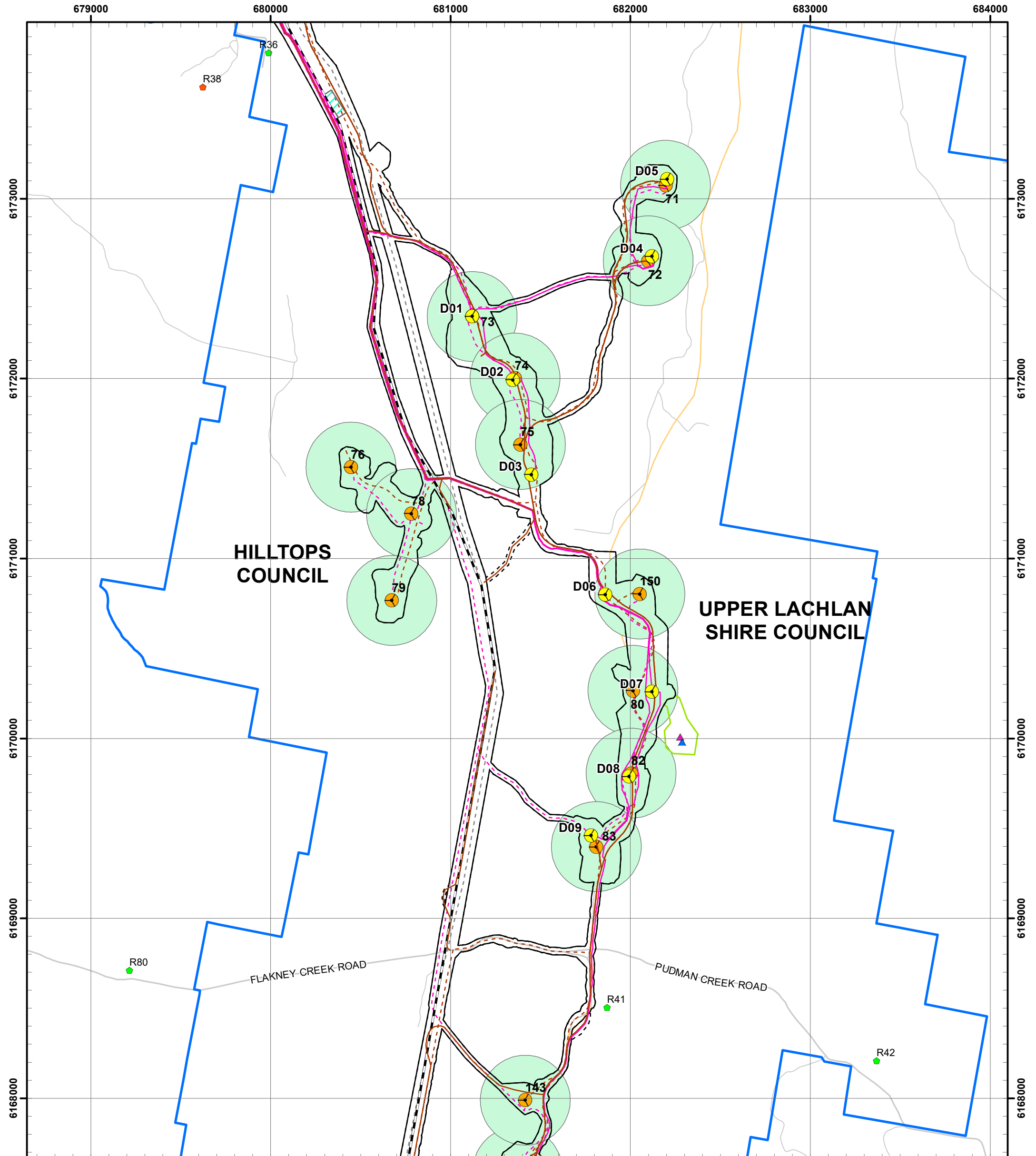
0 830
Meters

GDA 1994 MGA Zone 55
1:20,000



Document Path: G:\GIS\Project Data\Development\NSWRyePark\Maps\Working\RPWF_ALI64D_Infrastructure Changes_20220929.mxd

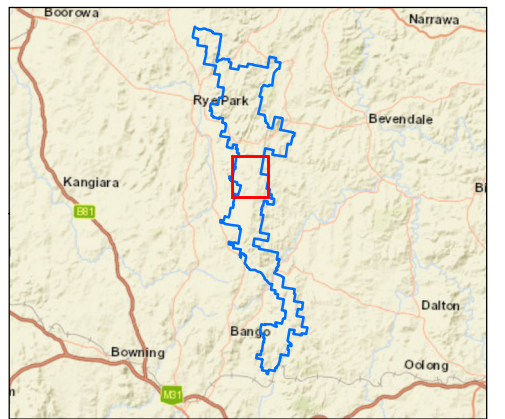




Revised Final Pre-Construction Layout		Approved Project	
	Wind Turbine Layout		Wind Turbine Layout
	Permanent Met Masts		Micro-siting Areas
	Transmission Line (33kV)		Permanent Met Masts
	Transmission Line (330kV)		Transmission Line (33kV)
	Underground Cable (33kV)		Transmission Line (Up to 330kV)
	Access Tracks		Underground Cable (33kV)
	Connection Substation		Access Tracks
	Collector Substation		Collector Substation
	O&M Facility		Connection Substation
	Temporary Construction Compounds		O&M Facilities
	Temporary Batch Plants		Temporary Construction Compounds
	Temporary Laydown Areas		Temporary Batch Plants
	Development Corridor		Temporary Laydown Areas
			Development Corridor
			Development Corridor - Permanent Met Masts

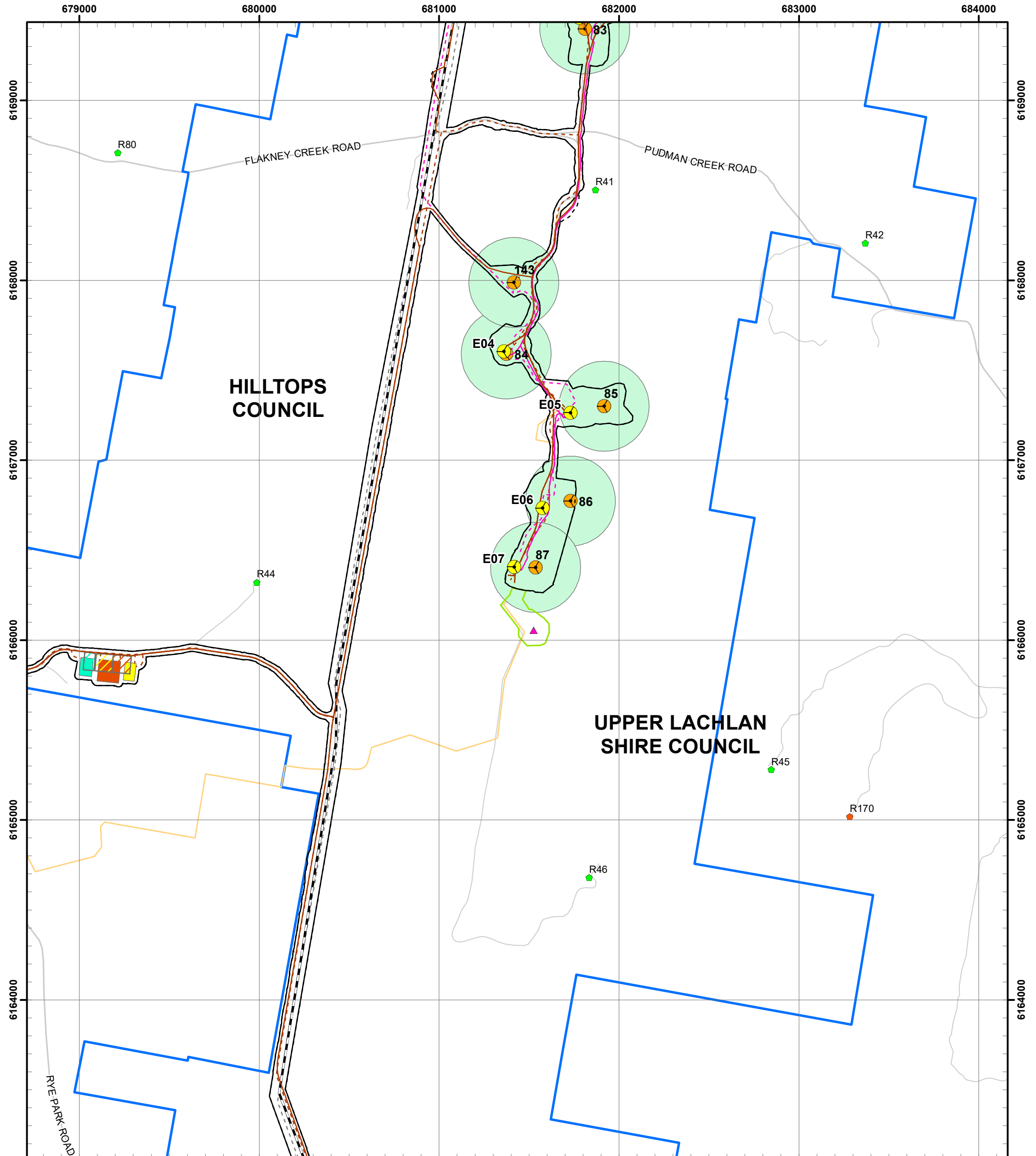
Date: 29/09/2022
Version: D

Meters
GDA 1994 MGA Zone 55
1:20,000



Document Path: G:\GIS\Project Data\Development\NSWR\YerPark\Maps\Working\RPWF_ALI64D_Infrastructure Changes_20220929.mxd



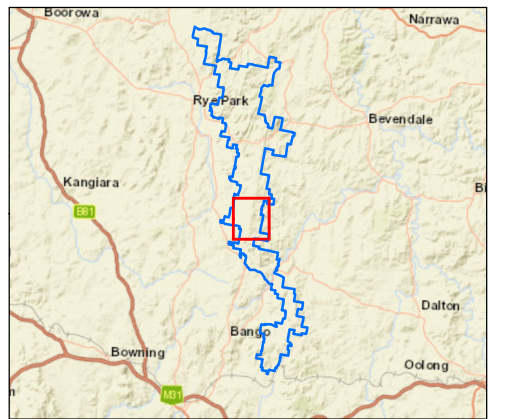


Revised Final Pre-Construction Layout	Approved Project
Wind Turbine Layout	Wind Turbine Layout
Permanent Met Masts	Micro-siting Areas
Transmission Line (33kV)	Permanent Met Masts
Transmission Line (330kV)	Transmission Line (33kV)
Underground Cable (33kV)	Transmission Line (Up to 330kV)
Access Tracks	Underground Cable (33kV)
Connection Substation	Access Tracks
Collector Substation	Collector Substation
O&M Facility	Connection Substation
Temporary Construction Compounds	O&M Facilities
Temporary Batch Plants	Temporary Construction Compounds
Temporary Laydown Areas	Temporary Batch Plants
Development Corridor	Temporary Laydown Areas
	Development Corridor
	Development Corridor - Permanent Met Masts

Date: 29/09/2022
Version: D

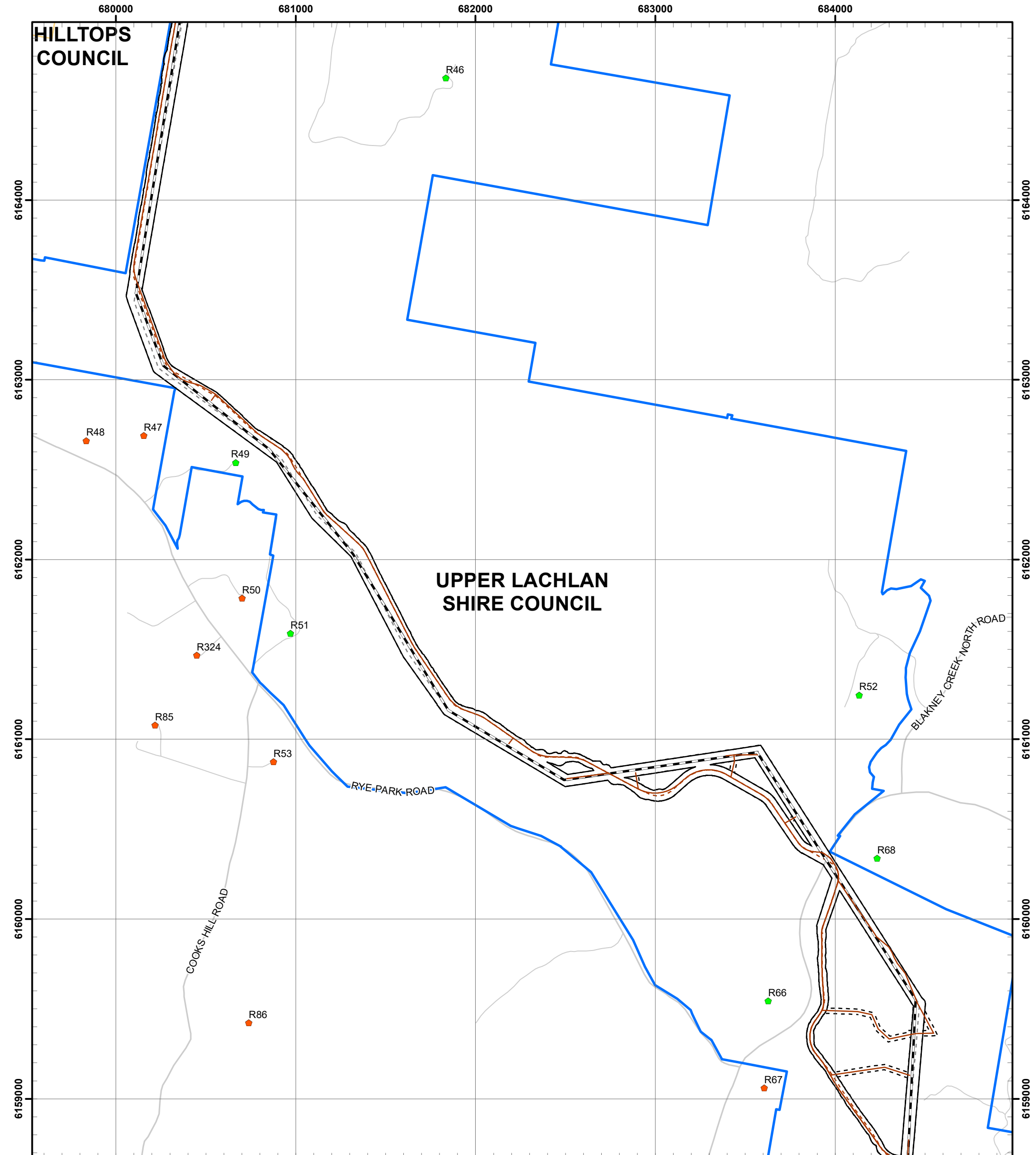
0 830
Meters

GDA 1994 MGA Zone 55
1:20,000



Document Path: G:\GIS\Project Data\Development\NSWRyePark\Maps\Working\RPWF_ALI64D_Infrastructure Changes_20220929.mxd



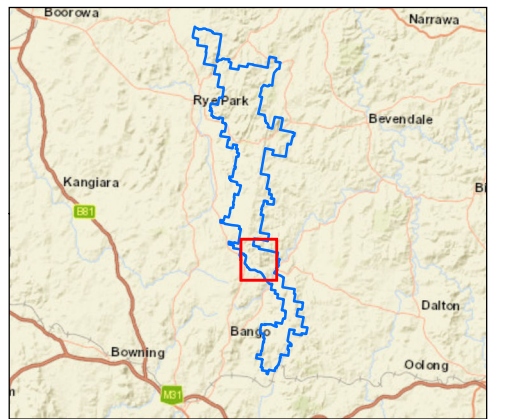


Revised Final Pre-Construction Layout	Approved Project	Local Government Area
Wind Turbine Layout	Wind Turbine Layout	Local Government Area
Permanent Met Masts	Micro-siting Areas	Transgrid Transmission Line (330kV)
Transmission Line (33kV)	Permanent Met Masts	Project Boundary
Transmission Line (330kV)	Transmission Line (33kV)	
Underground Cable (33kV)	Transmission Line (Up to 330kV)	
Access Tracks	Underground Cable (33kV)	
Connection Substation	Access Tracks	
Collector Substation	Collector Substation	
O&M Facility	Connection Substation	
Temporary Construction Compounds	O&M Facilities	
Temporary Batch Plants	Temporary Construction Compounds	
Temporary Laydown Areas	Temporary Batch Plants	
Development Corridor	Temporary Laydown Areas	
	Development Corridor	
	Development Corridor - Permanent Met Masts	

Date: 29/09/2022
Version: D

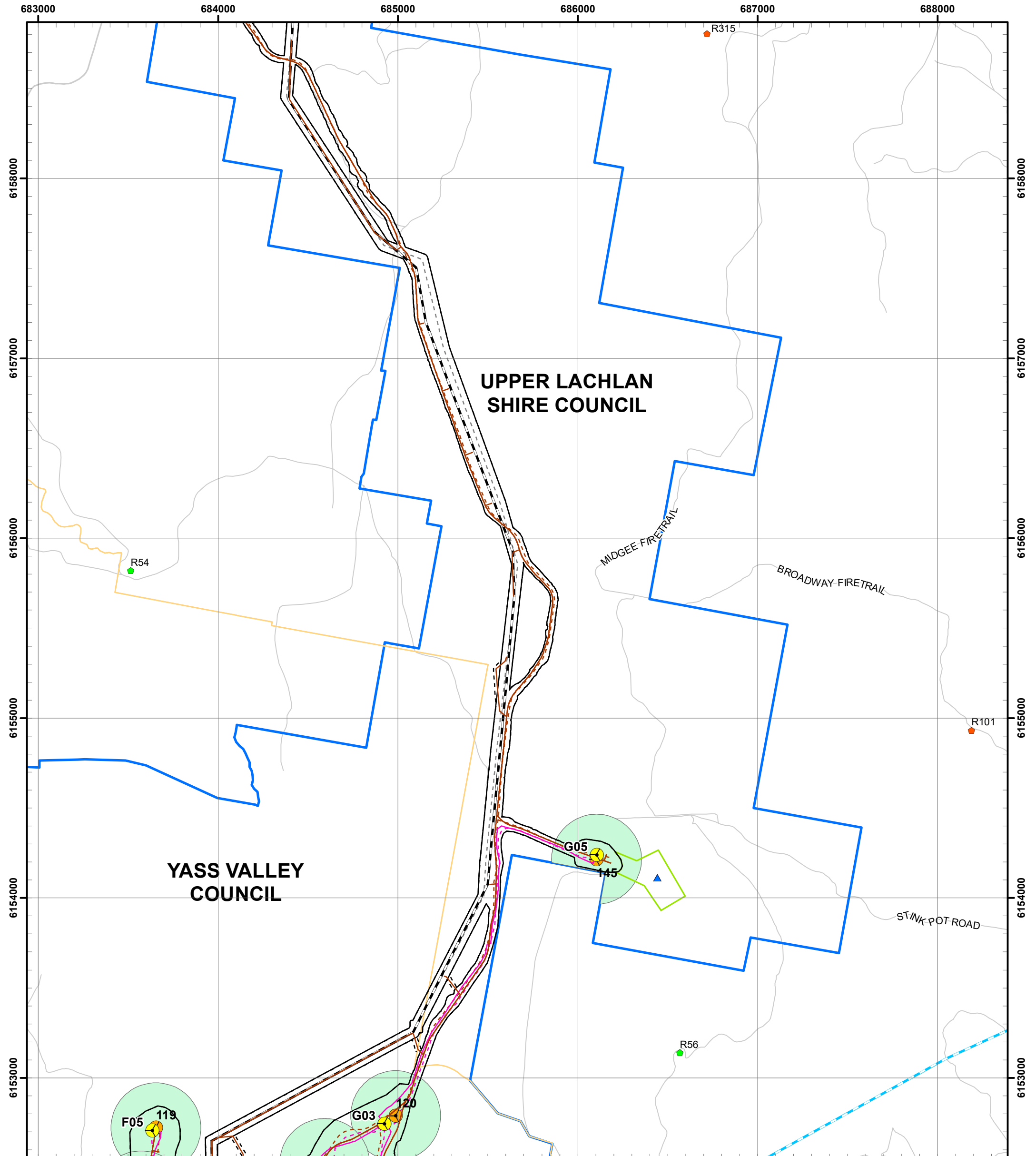
0 830
Meters

GDA 1994 MGA Zone 55
1:20,000



Document Path: G:\GIS\Project Data\Development\NSW\RyePark\Maps\Working\RPWF_ALI64D_Infrastructure Changes_20220929.mxd



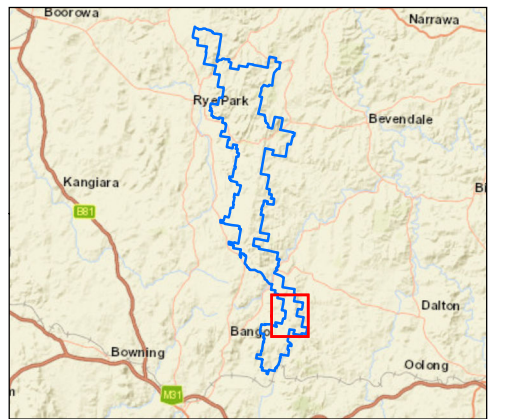


Revised Final Pre-Construction Layout	Approved Project
Wind Turbine Layout	Wind Turbine Layout
Permanent Met Masts	Micro-siting Areas
Transmission Line (33kV)	Permanent Met Masts
Transmission Line (330kV)	Transmission Line (33kV)
Underground Cable (33kV)	Transmission Line (Up to 330kV)
Access Tracks	Underground Cable (33kV)
Connection Substation	Access Tracks
Collector Substation	Collector Substation
O&M Facility	Connection Substation
Temporary Construction Compounds	O&M Facilities
Temporary Batch Plants	Temporary Construction Compounds
Temporary Laydown Areas	Temporary Batch Plants
Development Corridor	Temporary Laydown Areas
	Development Corridor
	Development Corridor - Permanent Met Masts
	Local Government Area
	Transgrid Transmission Line (330kV)
	Project Boundary

Date: 29/09/2022
Version: D

0 830
Meters

GDA 1994 MGA Zone 55
1:20,000

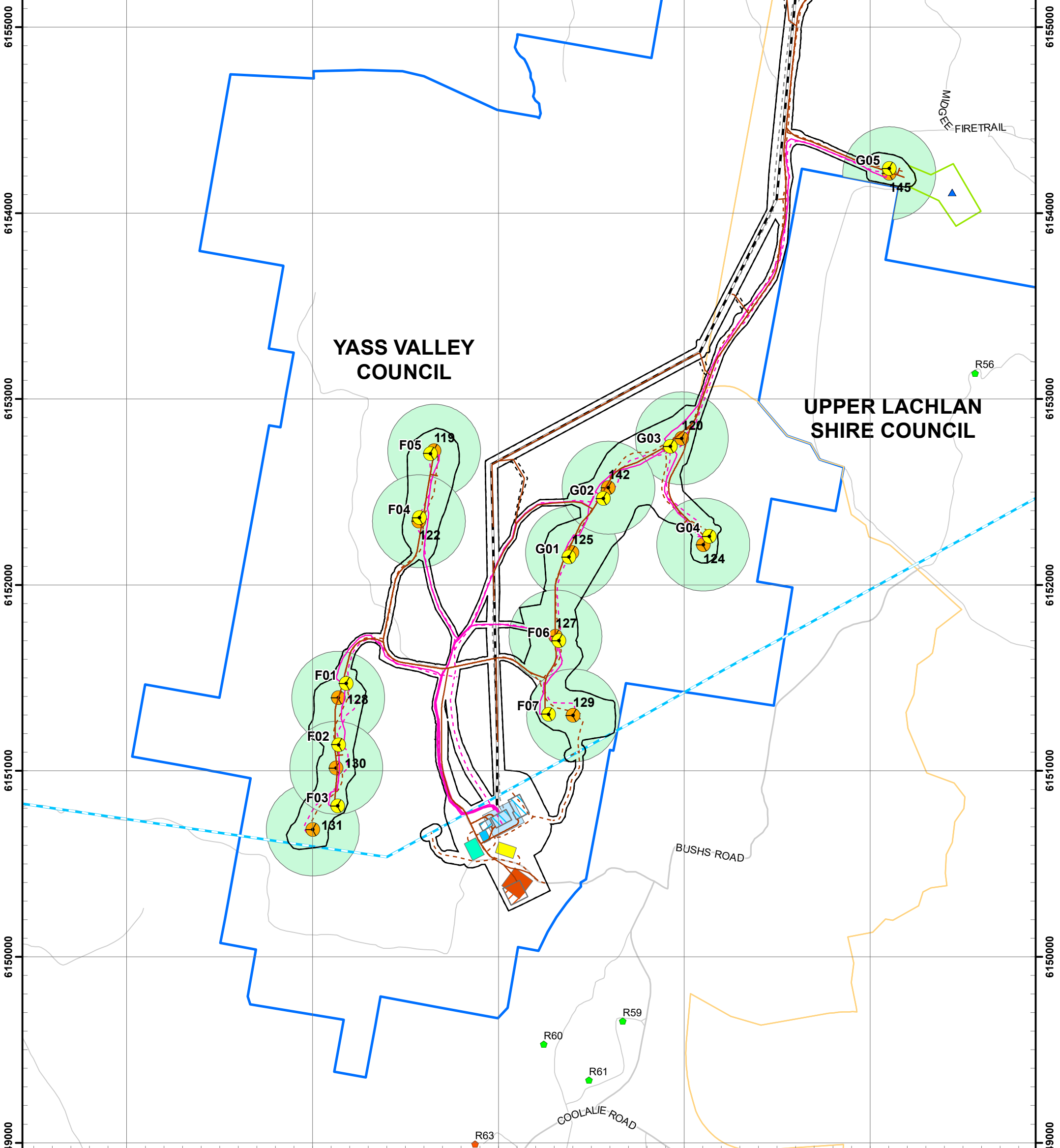


Document Path: G:\GIS\Project Data\Development\NSWRyePark\Maps\Working\RPWF_ALI64D_Infrastructure Changes_20220929.mxd

Rye Park Wind Farm Infrastructure Changes



682000 683000 684000 685000 686000

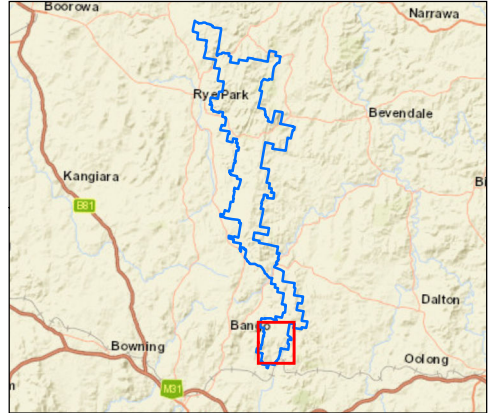


Revised Final Pre-Construction Layout		Approved Project	
Wind Turbine Layout	Wind Turbine Layout	Micro-siting Areas	Micro-siting Areas
Permanent Met Masts	Permanent Met Masts	Permanent Met Masts	Permanent Met Masts
Transmission Line (33kV)	Transmission Line (33kV)	Transmission Line (Up to 330kV)	Transmission Line (Up to 330kV)
Transmission Line (330kV)	Transmission Line (330kV)	Underground Cable (33kV)	Underground Cable (33kV)
Underground Cable (33kV)	Underground Cable (33kV)	Access Tracks	Access Tracks
Access Tracks	Access Tracks	Collector Substation	Collector Substation
Connection Substation	Connection Substation	O&M Facilities	O&M Facilities
Collector Substation	Collector Substation	Temporary Construction Compounds	Temporary Construction Compounds
O&M Facility	O&M Facility	Temporary Batch Plants	Temporary Batch Plants
Temporary Construction Compounds	Temporary Construction Compounds	Temporary Laydown Areas	Temporary Laydown Areas
Temporary Batch Plants	Temporary Batch Plants	Development Corridor	Development Corridor
Temporary Laydown Areas	Temporary Laydown Areas	Development Corridor - Permanent Met Masts	Development Corridor - Permanent Met Masts
Development Corridor	Development Corridor		

Date: 29/09/2022
Version: D

0 830
Meters

GDA 1994 MGA Zone 55
1:20,000



Document Path: G:\GIS\Project Data\Development\NSW\RyePark\Maps\Working\RPWF_ALI64D_Infrastructure Changes_20220929.mxd