

# Dundonnell Wind Farm

---

## Fact Sheet

---

February  
2018

Tilt Renewables is an owner, operator and developer of renewable generation assets across Australia and New Zealand, primarily consisting of wind, solar and storage projects.

We have an existing asset base of 307 operating turbines across seven wind farms with a total installed capacity of 582MW. In addition, the Salt Creek Wind Farm in Victoria is under construction, which when completed will add another 54MW to the operational portfolio.

This includes the Snowtown Wind Farm - South Australia's largest and Australia's second largest wind farm - and Tararua Wind Farm, New Zealand's largest wind farm.

---

### Project description

The inspiration for the circa \$600 million Dundonnell Wind Farm came from a group of local land holders who were keen to source a wind farm for their properties.

Tilt Renewables (then Trustpower) purchased the site from developer NewEn Australia in June 2013. The site is sparsely populated, largely made of stony rise country and predominantly used for grazing stock.

All occupied dwellings within two kilometres of a proposed WTG are participating in the project. There are only 11 occupied dwellings between two and four kilometres of the proposed wind farm and three of those are participating in the project.

The EES and planning permit applications were submitted to the relevant authorities in April 2015 and the final planning approval for the wind farm was granted in July 2016 for up to 96 turbines. In December 2017 the Minister for Planning granted an increase in tip height to 189 metres and a reduction in turbine numbers to 88.

---

### Project facts

- Circa \$600 million project
- Up to 88 turbines
- Blade tip height 189 metres
- Installed capacity of about 330MWs
- 12 host landholders
- About 4500 hectares
- 38 kilometres of 220kV overhead transmission line to the connection at the MOPS substation
- Underground 33kV cables between the turbines
- Onsite quarry and concrete batching plants
- Agreements in place with all occupied dwellings within two kilometres

---

### Project benefits

#### Environmental

The Dundonnell Wind Farm will produce enough clean energy each year to power more than 155,000 homes and save the emission of roughly 670,000 tonnes of carbon. This is the equivalent of removing about 140,000 cars from our roads.

Since 2009 there have been many long-running flora, fauna, heritage and other environmental assessments undertaken at the Dundonnell site. These have generated a wealth of associated documented information that previously did not exist.

Wind farms offer many other benefits including drought-proofing farms and improving access for fire fighters through the creation of additional fire breaks. There will be about 70 kilometres of new access tracks constructed as part of the proposed Dundonnell Wind Farm.

---

## Employment

A wind farm brings many direct opportunities for employment to the region during both the construction phase and ongoing operations once the wind farm is commissioned.

Flow on employment benefits are also achieved as the project brings demand for local business services and consumer goods.

Most regions have a range of businesses that will provide services to a wind farm project.

These include:

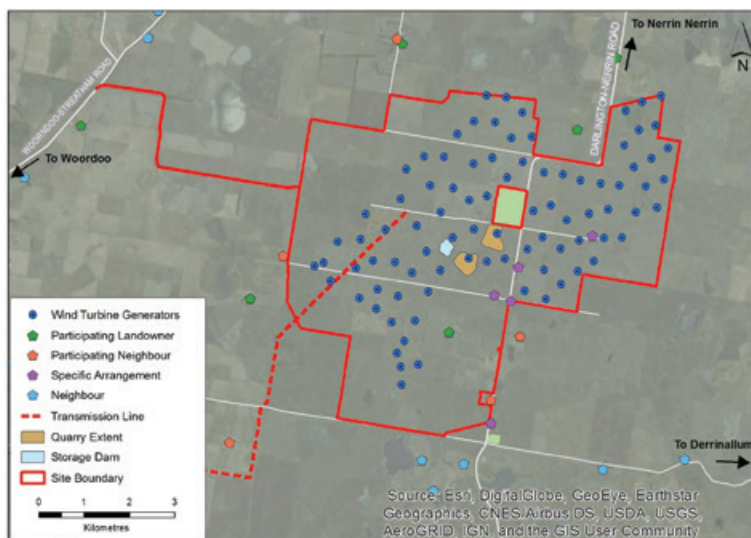
- Domestic level electricians;
- Transport operators;
- Competent machine operators;
- General labourers;
- Quarry supplies; and
- Concrete businesses.

The Dundonnell Wind Farm will directly employ more than 200 staff on site during construction, which will take up to three years. Economic assessments indicate the multiplier effect will sustain about 960 jobs per year throughout this construction period. Once operational, the proposed Dundonnell Wind Farm will employ 10 full-time staff during its 25-year operation.

Anyone interested in supply of local services or employment is encouraged to register their interest on the project website provided below.

---

## Dundonnell Wind Farm turbine layout map



The site is located about 23 kilometres north-east of Mortlake, in a sparsely populated area predominantly used for grazing stock.

---

## Victorian Renewable Energy Target

Victoria now has a renewable energy target, with legislation passing through State Parliament in October 2017.

The Renewable Energy (Jobs and Investment) Bill 2017 creates laws to reach renewable energy targets of 25 per cent by 2020 and 40 per cent by 2025 in Victoria.

As part of this scheme the Victorian Renewable Energy Auction Scheme (VREAS) will involve an auction to support up to 650 megawatts of renewable energy capacity (across wind, solar and potentially other renewable sources), which will provide enough electricity to power 389,000 households or enough energy to power Geelong, Ballarat, Bendigo and Latrobe Valley combined.



---

## Community Benefit

Tilt Renewables is committed to providing financial support for the local community through community benefit programs.

A community fund will be implemented when construction of the wind farm commences and will be administered by a community-led group. We are currently working on establishing this group.

There will be further shared benefit programs made available to the local community as well as the regional community. Further information will be made available as the project proceeds towards construction.

For more information please visit the project website

Web: [www.dundonnellwindfarm.com.au](http://www.dundonnellwindfarm.com.au)

Email: [dundonnellwindfarm@tiltrenewables.com](mailto:dundonnellwindfarm@tiltrenewables.com) | Phone: 1800122 823

Postal Address: PO Box 16080 Collins St West, Melbourne Vic 8007

