

Dundonnell Wind Farm

Newsletter
Edition

35

December
2023

We are proud to have supported an array of community projects over the past 12 months.

The Dundonnell Wind Farm Community Fund will open again for applications in January 2024 and will accept applications until the end of March 2024. Applications for the Dundonnell Wind Farm Education Fund will be extended into early-2024. If you're interested in applying, head to our website and submit an application by emailing: DDWFcommunityfund@tiltrenewables.com

This December newsletter includes updates on:

- What's happening on site
- Compliance activities
- Benefit Sharing



PROJECT UPDATE

What's happening on site

This year, the Dundonnell Wind Farm generated 1012.69 GWh of clean energy. That's enough to power 168,000 households or the equivalent of 461,000 cars taken off the road, while keeping 972,000 tonnes of greenhouse gas emissions from entering the atmosphere. Currently there are 80 operational turbines at the site. The annual substation outage maintenance has been completed, along with the annual turbine maintenance.

SIGN UP & STAY INFORMED

We are moving to email-only newsletters, so please make sure you are signed up to receive our newsletter by email by hovering over the QR code. If you don't have email but would still like to receive the newsletter, please call us on 1800 935 458 and we'll include you in our post-only distribution list.





Compliance Activities

We continue to implement the Brolga Compensation Plan, with the final Year 3 Report being finalised by our partners at Odonata and Greening Australia. During the reporting period we observed Brolgas at all nominated wetlands.

Implementation of the Bat and Avifauna Management Plan is ongoing. The Year 2 report is still being assessed by the Department of Energy, Environment and Climate Action and Moynes Shire Council. Once approved, the final Year 2 Annual Report will be made available on the Tilt Renewables website. We are currently drafting the Year 3 report. The annual noise compliance statement has been submitted to the Environmental Protection Agency (EPA).



Figure 1: Wetland habitats



Figure 2: Brolgas foraging

BENEFIT SHARING

Community Fund – Round 2, 2023 recipients awarded

We are pleased to support the following successful groups and initiatives from Round 2 funding. The Dundonnell Wind Farm Community Fund will open for applications in January 2024 and will accept applications until the end of March 2024.

Organisation	Funding Approved
Darlington Speedway	\$3,000
Hexham Recreation Reserve	\$4,000
Lake Bolac Golf Club	\$5,000
Mount Elephant Community Management Inc	\$6,700
Westmere Fire Brigades Group	\$15,000
TOTAL	\$33,700

Dundonnell Wind Farm Education Fund

Tilt Renewables has committed to providing \$15,000 annually for the life of the project, towards access to education initiatives or training for all ages. The outcome must be that the funds have supported an individual/s, a program, or a not-for-profit organisation in achieving an educational benefit.

The fund is administered by the Community Fund Committee.



Thinking of applying for the Dundonnell Wind Farm Education Fund?

The application period has been extended into early-2024!



Monash University site visit

In November 2023, we had the pleasure of hosting a group of 23 students and 2 academics from the Monash University Business School at our Dundonnell Wind Farm site. Tilt Renewables was approached by Monash University to provide a tour and presentation to provide their students with an understanding of environmental, social, and commercial sustainability, as well as an insight into our business and industry operations.

During the visit, we discussed the Dundonnell Wind Farm operations within the local community. We also explored the National Energy Market's impact on our on-site business operations. The students demonstrated great curiosity with their questions covering a range of topics, including costs, contracts, benefits to the local community, overall wind farm sustainability and future potential growth.

With the clean economy projected to require 2 million jobs by 2050, we believe it's crucial to establish as many connections with the education sector as possible. The visit presented a valuable opportunity to strengthen our relationship with Monash University and provide them with meaningful insights into our operations.

Figure 3: Monash University students gathered at the base of a wind turbine.



Mortlake College site visit

In August 2023, we provided a tour of the Dundonnell Wind Farm to a group of year 9 and 10 students from Mortlake College. The site visit gave students an insight into wind turbine power generation, renewable energy more broadly, site operations and the role the wind farm plays in the local community. Additionally, the tour highlighted the jobs and opportunities that the wind farm has brought to the region as well as the education pathways into the sector. We were pleased to host a careers representative from Federation University to talk to the students on the day too.

Figure 4: Mortlake College students gathered at the base of a wind turbine.



Vacancies on the Dundonnell Wind Farm Community Engagement Committee (CEC)

The Moyne Shire Council is currently seeking community representatives to fill three vacancies on the Dundonnell Wind Farm CEC. If you are interested in being a community representative on the CEC, please see the **Wind Farm CEC nomination form**: www.moyne.vic.gov.au/Our-Services/Energy-Projects/Wind-farm-CEC-nomination-form

Lismore Land Protection Group

It's good to see the progress made by the Lismore Land Protection Group in their tree planting efforts. Recipients of a 2023 Dundonnell Wind Farm Community Fund grant of \$2000, the funding has enabled the planting of 1270 trees, with 500 and 770 trees being planted for two respective landholders within the 30km radius of the wind farm. Since 1996, the Lismore Land Protection Group have been planting around 40,000 trees each year.

These plantings have become dense shelter belts, providing much needed shelter for livestock and valuable habitat for local fauna. It's great to see an area that was once bare become covered with native plants mostly Indigenous to the area.

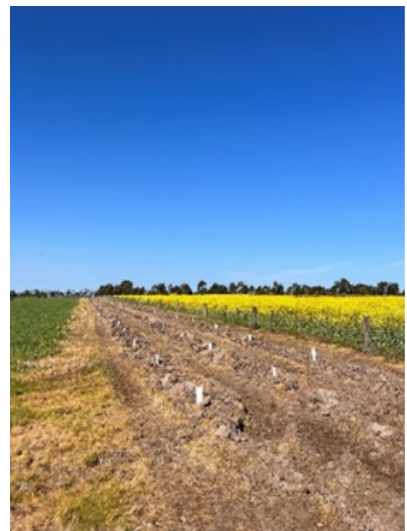


Figure 5: Photos of tree planting efforts made by the Lismore Land Protection Group



Hover over the QR code to learn about how to apply for the Dundonnell Wind Farm Community Fund or the Education Fund.

Call or email us should you have any questions.



GET IN TOUCH

If you have any queries about the Project, the benefit sharing program or possible business and employment opportunities, please do not hesitate to contact us.

Web: www.dundonnellwindfarm.com.au

Email: dundonnellwindfarm@tiltrenewables.com | **Phone:** 1800 WE TILT (938 458)

Postal Address: PO Box 16080 Collins St West, Melbourne Vic 8007